



## Unit 2.06

Hoxton Street Studios, 12-18 Hoxton Street, Shoreditch, N1 6NG

### Second floor office to let in Hoxton Street, Shoreditch

**664 sq ft**  
(61.69 sq m)

- Excellent Natural Light
- Flexible Terms
- Great Location
- Open Plan Layout

# Unit 2.06, Hoxton Street Studios, 12-18 Hoxton Street, Shoreditch, N1 6NG

## Summary

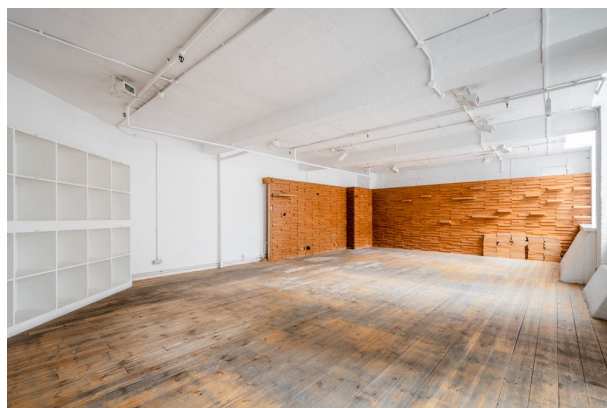
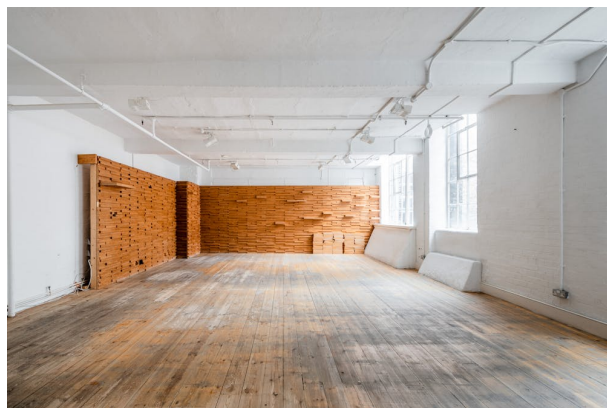
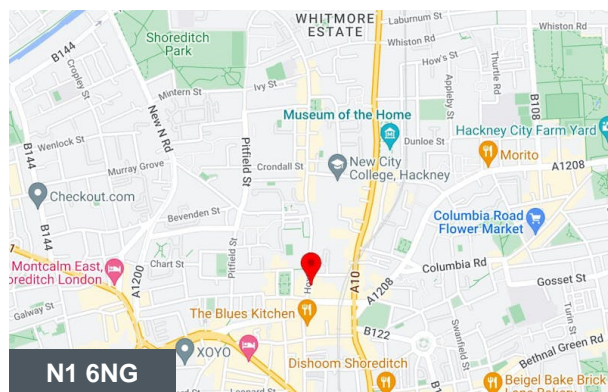
<b>Available Size</b>	664 sq ft
<b>Rent</b>	£19,920.00 per annum
<b>Rates Payable</b>	£7,360.25 per annum Small Business Relief Scheme Applicable
<b>Rateable Value</b>	£14,750
<b>Service Charge</b>	£4,289.44 per annum
<b>Car Parking</b>	N/A
<b>VAT</b>	Not applicable
<b>Legal Fees</b>	Each party to bear their own costs
<b>Estate Charge</b>	N/A
<b>EPC Rating</b>	D (78)

## Description

A characterful private office in a Shoreditch warehouse conversion very well located just off Old Street and adjacent to Hoxton Square. On the second floor of the popular Hoxton Street Studios this unit is flooded with natural light from the original crittal windows, offering the ideal working environment for creative companies.

Shoreditch is home to variety of occupiers making it an ideal location for many creative companies. Nearby restaurants include Tramshed, The Merchants Tavern, Blacklock and The Clove Club along with a selection of other lunch spots. Old Street Underground, Liverpool Street Station and Shoreditch High Street Overground are all a short walk away offering plenty of options for commuters providing swift access into the City and Central London.

Available now on flexible terms.



## Viewing & Further Information



**George Sarantis**

020 7613 4044 | 0731 1077 549

george@fyfemcdade.com