



F F Flat, 6 The Esplanade, Plymouth
£650,000 LEASEHOLD





F F Flat

6 The Esplanade, Plymouth

Beautiful Grade II* Listed Duplex apartment with private south facing gardens, three double bedrooms and superb panoramic views of Plymouth Sound & Promenade. With large kitchen, plethora of period features, two bathrooms & no onward chain.

Council Tax band: D

Tenure: Leasehold

- Grade II* Listed Duplex Apartment
- Three Double Bedrooms
- Panoramic Views of Plymouth Sound
- Plethora of Period Features
- Stunning Communal Entrance
- Exclusive & Private South Facing Gardens
- Two Bathrooms
- Large Lounge
- Additional Reception Room
- Ample Storage Space & Utility Area



F F Flat

6 The Esplanade, Plymouth

You enter the property on the first floor into an entrance hall, which leads through to the lounge/dining room, kitchen, third bedroom and a bathroom. The hallway has a plethora of original features, with a storage cupboard and solid oak flooring to finish.

The lounge/dining room is a superb size with two large sash windows offering panoramic views over Plymouth Hoe promenade and Plymouth Sound. There is an exquisite marble fireplace and a plethora of original features with a window into the stairway. The room is perfect for entertaining and enjoying the views on offer.

The kitchen is at the rear of the property and has a range of solid wood wall and base mounted units complete with a granite work surface over. There is a range of integral appliances, including two fridges and a dishwasher. There is a butler sink with tiled splash backs and space for a large range cooker. The kitchen has a large island with matching units and work surface, with a tiled floor and a large sash window to the rear elevation. There is half a door which opens into the stairwell with stairs down to the ground floor accommodation.

The rest of the first floor accommodation comprises of the third bedroom which is a good double size with a sash window to the rear elevation, solid oak flooring and a large fitted wardrobe and a bathroom. The bathroom has a high level w/c, with a bath with a shower attachment and a hand wash basin. There is an obscured sash window to the rear elevation, a boiler cupboard and solid oak flooring.







GARDEN

PERMIT

1 Parking Space

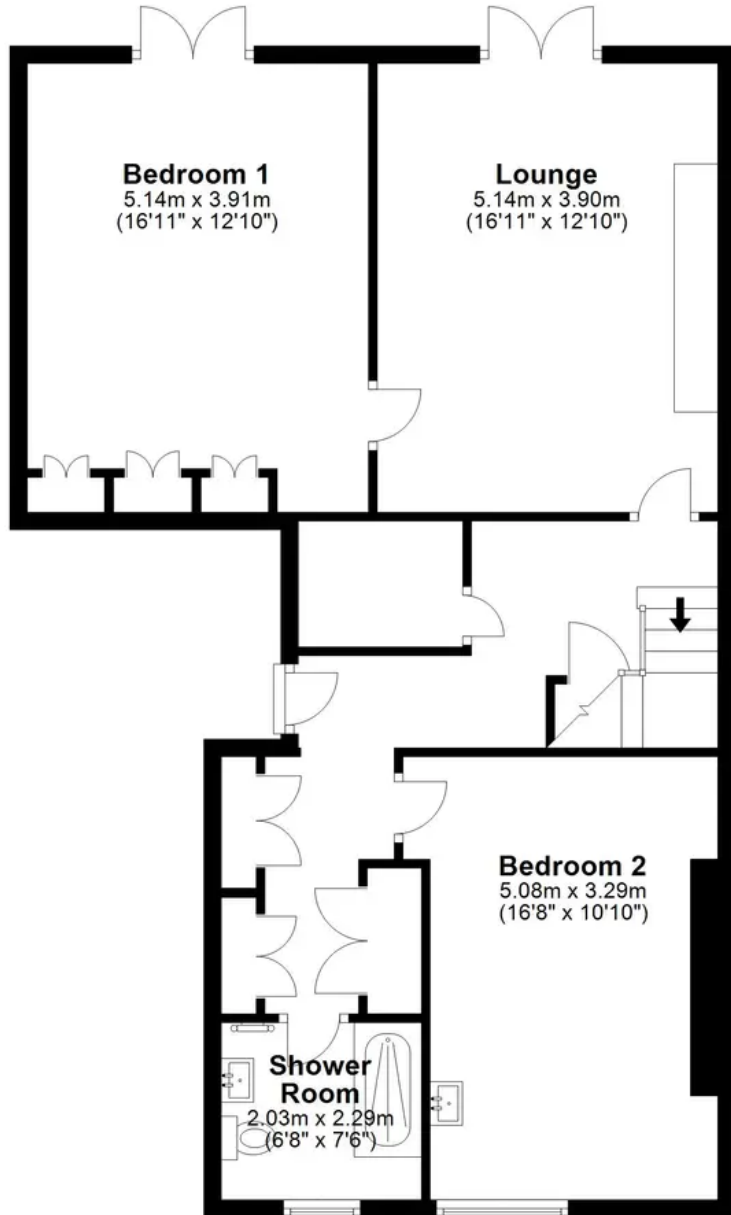
Via Plymouth City Council for Zone H





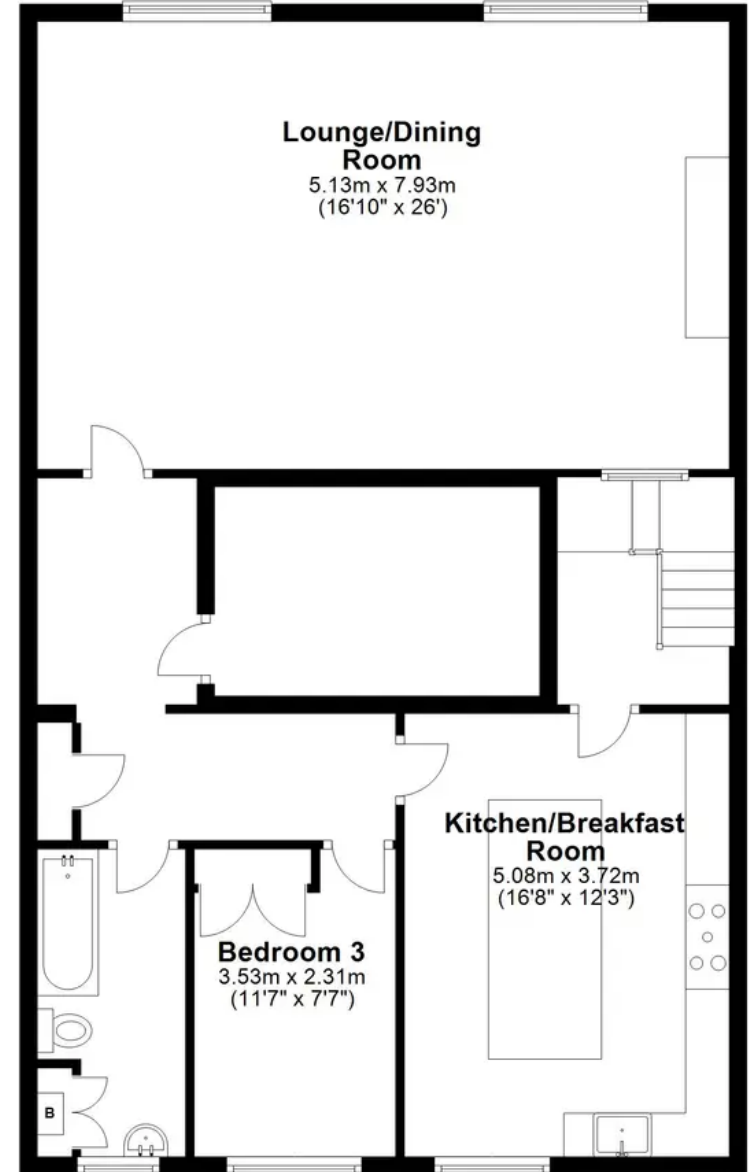
Ground Floor

Approx. 83.0 sq. metres (893.7 sq. feet)



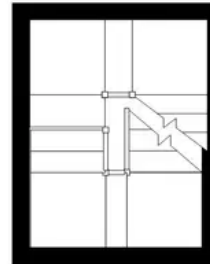
First Floor

Approx. 91.6 sq. metres (986.1 sq. feet)



Stairwell

Approx. 5.1 sq. metres (55.2 sq. feet)



Total area: approx. 179.8 sq. metres (1934.9 sq. feet)

The Esplanade, Plymouth Hoe, Plymouth



Atwell Martin

Atwell Martin, 65 Southside Street – PL1 2LA

01752 202121

plymouthsales@atwell-martin.co.uk

plymouth.atwellmartin.co.uk/

Atwell Martin Plymouth endeavour to ensure the accuracy of property details produced and displayed. Please note that we have not tested any apparatus, equipment, fixtures, fittings or services and so cannot verify that they are connected, in working order or fit for purpose. It is imperative that the buyer of any property makes such checks, prior to purchase so as to satisfy themselves of the properties suitability for their purchase. .