

WOODLANDS ROAD WEST

WENTWORTH, VIRGINIA WATER • GU25



BARTON · WYATT

WOODLANDS ROAD WEST WENTWORTH • SURREY

Beautifully presented Wentworth mansion

Galleried reception hall ♦ Cloakrooms ♦ Drawing room
Dining room ♦ Spacious kitchen/breakfast room with family
area ♦ Utility room

Impressive indoor swimming pool complex with spa bath,
gym area, steam room and changing facilities

Splendid master bedroom suite with dressing room and
luxurious en suite bathroom

5 further bedroom suites arranged over 2 floors

Games room ♦ South facing roof terrace ♦ Plant room
Triple garage with self contained staff flat above
Extensive terracing and landscaped gardens

Approximate gross internal floor area 11,647 sq ft
(1082 sq m)

In all about 0.5 hectares (1.15 acres)

Viewing by appointment only

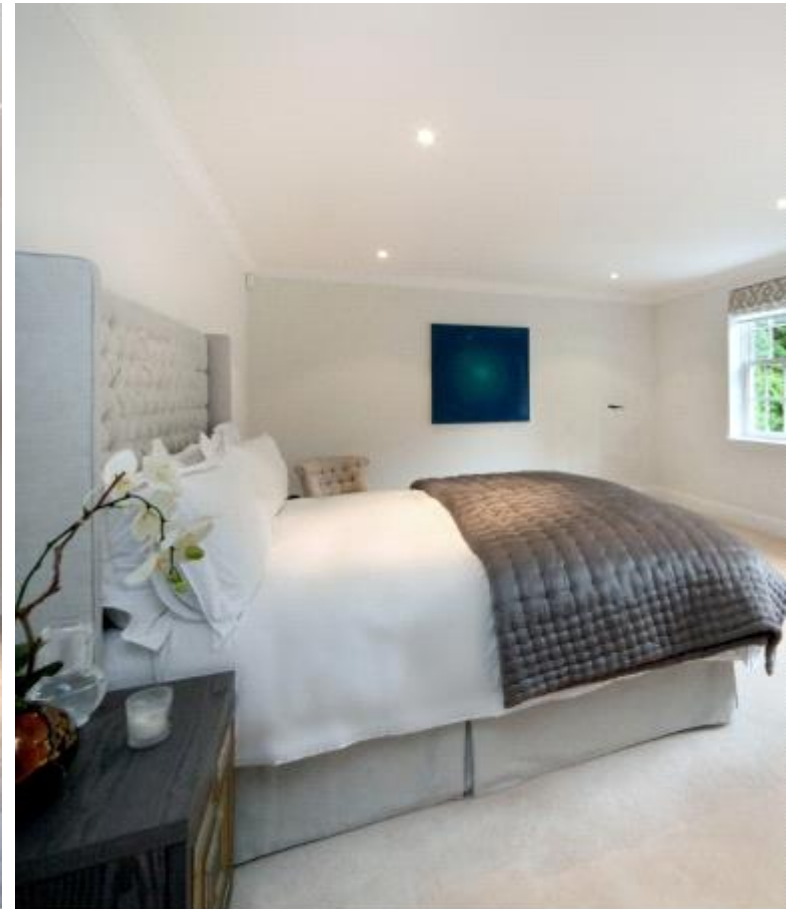
M25 (J13) 3.5 miles ♦ Ascot 4 miles ♦ Windsor 6 miles
♦ Central London 28 miles
(Distances are approximate)

These particulars are intended only as a guide and must not be relied upon as
statements of fact. Your attention is drawn to the Important Notice on the last
page of the text.















Property description

Available to rent is this beautifully presented six bedroom Wentworth mansion. Finished to the highest specification and situated on the prestigious Wentworth Estate. Designed for entertaining on a grand scale. There is garaging with a staff apartment above, an impressive pool complex and secluded landscaped gardens.

Glazed oak doors lead into the fabulous galleried reception hall with this feeling of space extending through to the reception rooms. The drawing room is dual aspect with limestone fireplace. One of the property's feature rooms is the kitchen/breakfast/family room which includes a Smallbone kitchen and 3 sets of French doors leading to the rear, with a south facing Indian sandstone terrace.

On the first floor the feeling of space continues with an extensive galleried landing with doors off to the principal bedroom accommodation. The master bedroom suite is generous and features a well appointed dressing room and luxurious bathroom. On this level there are 4 further bedroom suites all with high specification bathrooms. On the second floor there is a further bedroom and bathroom but of particular note is the large games room with concertina doors onto the south facing roof terrace.

The impressive indoor swimming pool complex includes a Centurion heated pool (10m x 4m) with an adjoining spa bath, gym area, steam room and changing facilities.

Externally, the property is approached via ornate wrought iron gates with an in and out driveway leading to an extensive parking area and the triple garage with staff apartment above. To the rear of the house the gardens are mainly laid to lawn with attractive borders, shrubs and a variety of mature trees, providing privacy and seclusion.

Furnished (but can be flexible).



Situation

The property is situated on the renowned Wentworth Estate with its three 18-hole championship golf courses, a 9-hole executive course and the Wentworth Club with swimming pool, restaurants, tennis courts and leisure club.

The local centres of Virginia Water, Ascot and Sunningdale cater for day to day shopping requirements with the larger towns of Windsor and Camberley within a short drive. Communications are excellent with the M3 and M4 close by, giving fast access to London, the M25 and the national motorway network, as well as Heathrow and Gatwick airports. Sporting facilities in the area are numerous and include racing at Ascot and Windsor, polo at Smith's Lawn, Windsor Great Park and the Royal County of Berkshire Polo Club at Winkfield.

Schooling is exceptional with many renowned private schools such as Eton College, Papplewick, Sunningdale, St Mary's, Hurst Lodge, St George's, St John's Beaumont and ACS Egham.





BARTON · WYATT