



# MILE

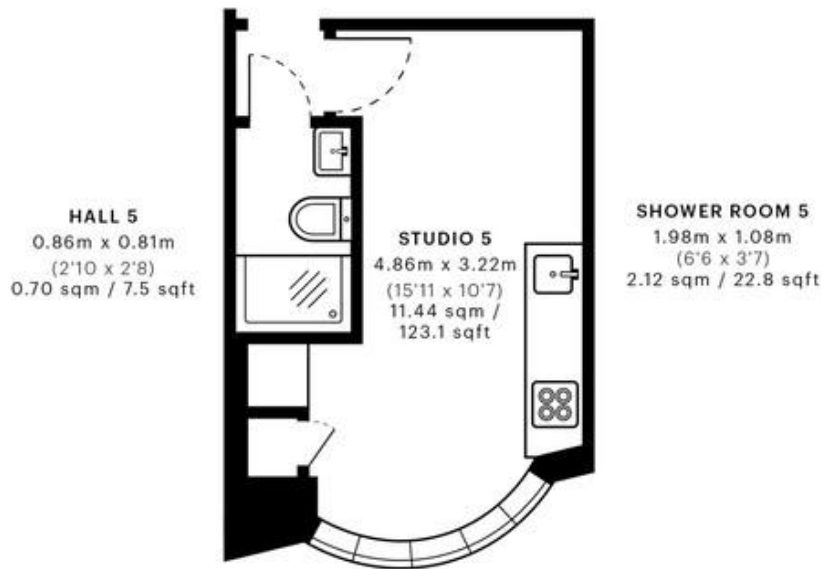


## North End Road, London £1,300 pcm

Mile are pleased to offer this BRAND NEWLY built SUPER BEDSIT for rent!! Consists of a double bed, built in wardrobes and fully fitted kitchen including a washer/dryer.. Finished to a high specification! The property is located RIGHT OPPOSITE Golders Green Station! Available 28th Feb 2023!! MUST BE SEEN TO AVOID DISAPPOINTMENT.

ALL BILLS INCLUDED (INCLUDING INTERNET) EPC RATING D.

- MODERN
- Private Kitchen
- Right opposite Golders Green Station
- Close to shops
- MUST BE SEEN!!
- Available 28th Feb 2023
- Internet Included
- ALL BILLS INCLUDED
- EPC Rating D



— Ground Floor

**GROSS INTERNAL AREA (GIA)**  
The footprint of the property  
14.90 sqm / 160.38 sqft

**NET INTERNAL AREA (NIA)**  
Excludes walls and external features  
Includes washrooms, restricted head height  
14.26 sqm / 153.49 sqft

**EXTERNAL STRUCTURAL FEATURES**  
Balconies, terraces, verandas etc.  
0.00 sqm / 0.00 sqft

**RESTRICTED HEAD HEIGHT**  
Limited use area under 1.5 m  
0.00 sqm / 0.00 sqft

Spec Verified floor plans are produced in accordance with

IFMS 38 RESIDENTIAL 15.24 sqm / 164.04 sqft

**MONEY LAUNDERING REGULATIONS 2003:** Intending purchasers will be asked to produce identification documentation at a later stage and we would ask for your co-operation in order that there will be no delay in agreeing the sale.

**General:** While we endeavour to make our sales particulars fair, accurate and reliable, they are only a general guide to the property and, accordingly, if there is any point which is of particular importance to you, please contact the office and we will be pleased to check the position for you, especially if you are contemplating travelling some distance to view the property.

**Measurements:** These approximate room sizes are only intended as general guidance. You must verify the dimensions carefully before ordering carpets or any built-in furniture.

**Services:** Please note we have not tested the services or any of the equipment or appliances in this property, accordingly we strongly advise prospective buyers to commission their own survey or service reports before finalising their offer to purchase.