



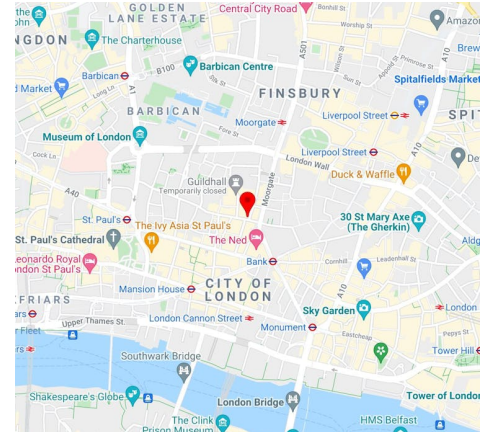
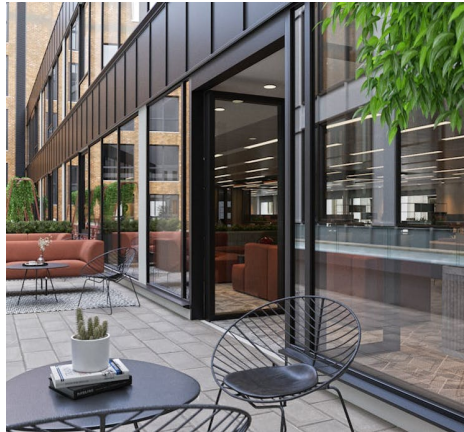
Situated in the heart of the City, this striking HQ building, with its elegant and period style façade, is just a 2 minute walk from Bank.

- EPC B
- BREEAM Excellent
- Private terrace (1st)
- End of trip facilities
- Car spaces with EVC
- HQ building

# 99 Gresham Street

London, EC2V 7NG

**AVISON  
YOUNG**



## Summary

**Available Size** 3,697 to 30,719 sq ft / 343.46 to 2,853.89 sq m

**Rent** Rent on application

**Rates Payable** £25.53 per sq ft

**Service Charge** £15.81 per sq ft

**EPC** B

## Property Highlights

Situated in the heart of the City, this striking HQ building, with its elegant and period style façade, is just a 2 minute walk from Bank station.

99 Gresham Street offers a range of accommodation across the Ground, 1st and 3rd floors. The 1st and 3rd floors are in A condition and the Ground floor benefits from a new Cat B fit it with meeting rooms and kitchen in situ.

## Location

Perfectly positioned for entertaining clients and benefiting from close proximity to an enviable mix of world-class eateries.

Visit a wide variety of cultural hotspots such as the Royal Exchange, Bloomberg Arcade, Leadenhall Market and much more.

Discover an eclectic mix of over 60 restaurants and bars within 5 minutes walk.

## Accommodation

Name	sq ft	sq m	Availability
3rd	13,549	1,258.74	Coming Soon
2nd	13,944	1,295.44	Let
1st - (Terrace)	13,473	1,251.68	Available
Ground	3,697	343.46	Available
<b>Total</b>	<b>44,663</b>	<b>4,149.32</b>	

## Specification

- Landlord's Generator (60 KVA spare capacity per floor)
- Four pipe fan-coil air conditioning
- 2.7m floor to ceiling height
- 150mm raised floor
- LED lighting
- Fire-fighting lift - 630kg
- Goods lift - 3,000kg
- 79 cycle spaces
- Changing facilities
- 11 shower rooms

### Jamie Major

07799 341569

jamie.major@avisonyoung.com



### Hannah Baxter

07442 375 903

hannah.baxter@avisonyoung.com



### James Walker

02079112049 | 07957388184

james.walker@avisonyoung.com



## Amenities & Specifications

- \_ Wired score: Certified
- \_ BREEAM Rating: Excellent
- \_ EV Charging Points: Yes