



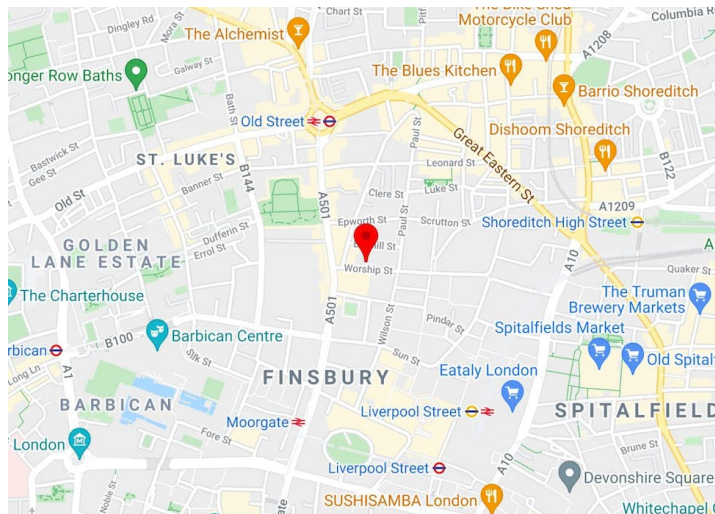
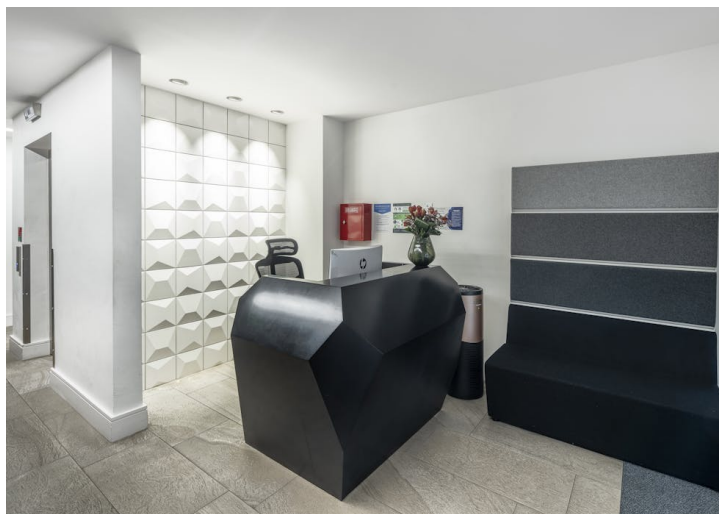
Economical, media style
Ground Floor office
space.

- x30 desks & kitchen
- Shower facilities
- Cycle storage
- Media style office
- Sky lights
- Exposed services

21 Worship Street

London, EC2A 2DW

**AVISON
YOUNG**



Summary

Available Size	1,728 sq ft / 160.54 sq m
Rent	£45.00 per sq ft
Rates Payable	£15.85 per sq ft
Service Charge	£9.25 per sq ft
Car Parking	N/A
EPC	B

Property Highlights

21 Worship Street offers highly economical, partially fitted ground floor office accommodation, currently benefitting from 30 desks and a kitchen/break-out area. The building was extensively refurbished in 2018 and benefits from the estate management and amenities of wider The Worship Estate.

Location

The building is within a ten minute walk of Moorgate, Old Street and Liverpool Street stations. The location bridges the gap between the city and tech belt, offering easy access to the traditional commercial districts and the vibrancy of Shoreditch/ Old Street.

Accommodation

The accommodation comprises of the following

Name	sq ft	Availability
Ground	1,728	Available
Total	1,728	

Specification

Exposed services with strip LED lighting
Air conditioning
Partial fit-out including kitchen and 30 x desks

Viewings

Via Avison Young only.

Terms

New terms directly from the landlord.

Jamie Major



07799 341569
jamie.major@avisonyoung.com

Hannah Baxter



07442 375 903
hannah.baxter@avisonyoung.com