

51 HIGH STREET

WADDESDON, BUCKINGHAMSHIRE, HP18 0JB

GUIDE PRICE £795,000



A NEWLY RENOVATED AND GENEROUSLY PROPORTIONED FOUR BEDROOM DETACHED FAMILY HOME WITH A SELF CONTAINED ANNEXE SITUATED IN THE POPULAR VILLAGE OF WADDESDON. CHAIN FREE.

FINE & COUNTRY



This fine home has been completely refurbished throughout providing stylish contemporary accommodation to suit a family who would just like to move in without any fuss.

The ground floor offers a spacious sitting room with doors leading out on to the rear courtyard garden, a snug/family room and a kitchen dining room with a generous range of fitted units and integrated appliances and a separate utility room.

Stairs leading to the first floor landing where you will find the master suite providing a double bedroom, dressing area with fitted wardrobes and en suite shower/WC. There are three further bedrooms and a family bathroom WC.

The self contained annexe provides a fitted kitchen with integrated appliances, a sitting room with bi-folding doors open out on to the courtyard garden, a double bedroom and a wet room.

Outside the paved courtyard garden is easy to maintain and a real feature is the turntable in the centre allowing vehicles to turn 360 degrees.

There is parking for two/three cars and there is a gated entrance providing privacy.

At a Glance

- Four Bedrooms
- Kitchen Breakfast Family Room
- Self contained annexe
- Electric Car Charger
- Car Turntable



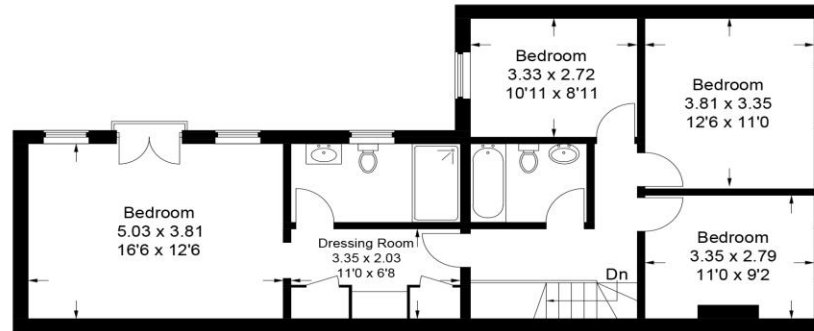
Accommodation

- Stunning Kitchen Dining Room
- Utility Room
- Sitting Room
- Study/Snug
- Guest WC
- Master Bedroom
- Dressing Room
- En suite Shower WC
- Three Further Bedrooms
- Family Bathroom
- Courtyard Rear Garden
- Self Contained Annexe
- Off Street Parking

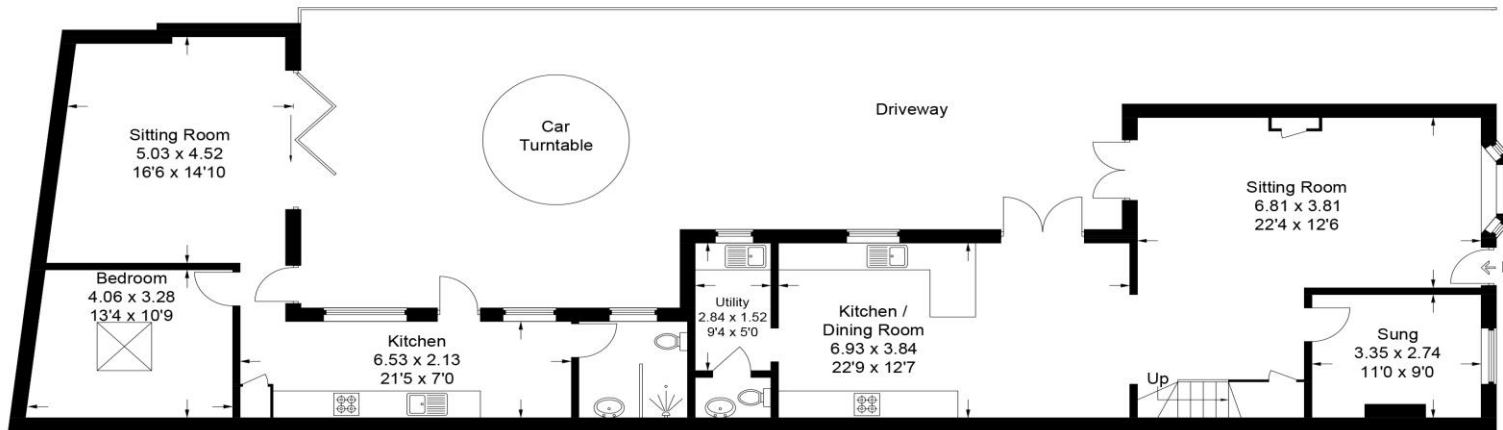


Guide Price
£795,000

Approximate Gross Internal Area
 Ground Floor = 80.7 sq m / 869 sq ft
 First Floor = 79.9 sq m / 860 sq ft
 Annexe = 57.0 sq m / 614 sq ft
 Total = 217.6 sq m / 2,343 sq ft



First Floor



Ground Floor

Annexe

This plan is for layout guidance only. Not drawn to scale unless stated. Windows and door openings are approximate. Whilst every care is taken in the preparation of this plan, please check all dimensions, shapes and compass bearings before making any decisions reliant upon them.

© CJ Property Marketing Ltd Produced for Fine & Country

Additional information

Services: Mains water, electricity

Heating: Gas central heating to radiators

Postcode: HP18 0JB

Council Tax Band: TBC

Local Authority: Buckinghamshire County Council

Energy rating: TBC

Fine & Country

14 High Street

Wendover

Buckinghamshire HP22 6EA

01296 625919

wendover@fineandcountry.com

Location

Waddesdon village is steeped in history including a church of Norman origins and the magnificent Waddesdon Manor. Extensive shopping facilities are situated at Bicester Village Retail Outlet, Aylesbury, Milton Keynes and Oxford. The village itself offers a Shop including a Post Office, a Doctor's Surgery, Pubs, the Five Arrows Hotel and an Indian Restaurant. Primary and Secondary Schools can be found in the village and Grammar Schools at nearby Aylesbury. Commuting by train can be found just 4 miles away at the Aylesbury Parkway station with railway links to London (Marylebone approx. 57 mins)