

**For Rent**



## People Make Places



**Mercer Street, Covent Garden WC2**

2 bedrooms | 738 sq ft

£765 pw





A good size two bedroom, one bathroom apartment located on the 3rd floor of a lovely period residential block in central Covent Garden. The apartment benefits from a fantastic private balcony accessed from the kitchen. The separate kitchen has space for a table and includes a free standing fridge freezer and washing machine.

#### What you need to know

- Two double bedrooms
- One bathroom
- Separate kitchen
- Private balcony
- 3rd floor walk up
- Unfurnished
- Available immediately
- Professionally managed
- Close from Covent Garden tube
- Moments from St Martins Courtyard



**Mercer Street, Covent Garden WC2**





### Overview

The apartment benefits from a fantastic private balcony and is located on the 4th floor, so lots of natural light. There are carpets in most areas, save the kitchen.

Available immediately on an unfurnished basis, 1-3 year contract with a 6 months mutual break clause, as agreed and subject to contract and satisfactory references. Westminster City Council tax band E.

Seven Dials is a charm-packed lifestyle & gastronomy hub connecting Covent Garden with Soho, defined by seven characterful cobbled streets radiating from the unmistakable sundial dating from the 1690's.



# People Make Places

London is collection of inspiring urban villages and one of the most exciting places in the world to live, work & play.

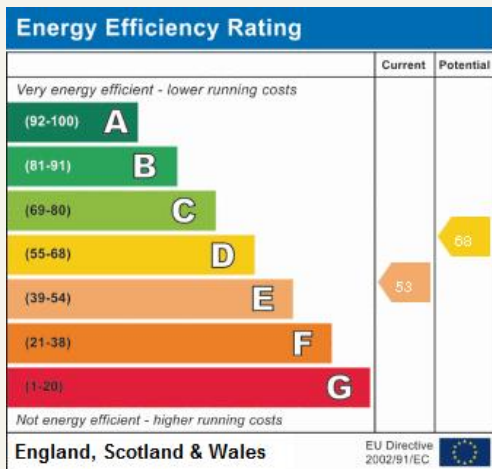
We work with both property owners and their occupiers, sharing the story of these vibrant neighbourhoods, conveying the unique soul & energy to future custodians, the people who'll keep them buzzing.

And unlike many real estate businesses we're not just about buildings, because streets & buildings don't make a neighbourhood.

We're about building relationships, because **people make places**.

MISINTERPRETATION ACT [COPYRIGHT] DISCLAIMER: Tavistock Bow Ltd for themselves and for the vendor(s) of this property whose agents they are, given notice that: 1. These particulars do not constitute, not constitute any part of, an offer or contract. 2. None of the statements contained in these particulars as to the property are to be relied on as statements or representations of fact. 3. Any intending purchaser or lessee must satisfy themselves by inspection or otherwise as to the correctness of each of the statements contained in these particulars. 4. The vendor(s) or lessor(s) do not make or give and neither Tavistock Bow Ltd nor any person in their employment has any authority to make or give any representation or warranty whatever in relation to this property. Finance Act 1989, Unless otherwise stated all prices and rents are quote exclusive of VAT. Property Misrepresentation Act 1991. These details are believed to be correct at the time of compilation but may be subject to subsequent amendment.

Follow us:     @tavistockbow

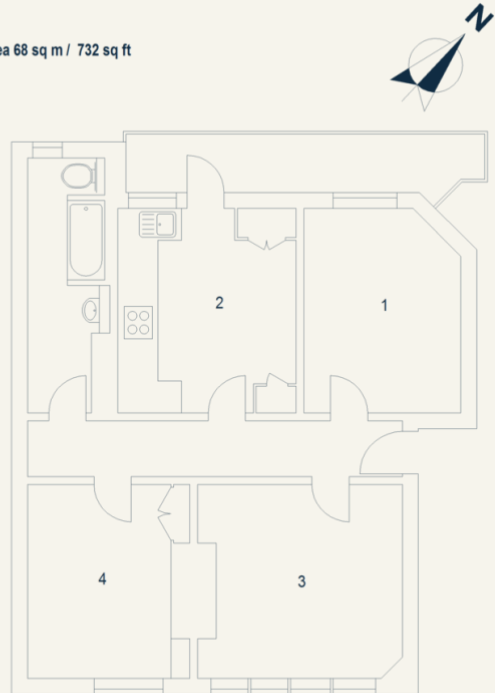


## Maidstone House, WC2

Approximate Gross Internal Area 68 sq m / 732 sq ft

Third Floor

- 1 Reception Room  
3.82 x 2.94M  
12'6" x 9'8"
- 2 Kitchen  
3.82 x 3.34M  
12'6" x 10'11"
- 3 Bedroom  
3.83 x 3.61M  
12'7" x 11'10"
- 4 Bedroom  
3.63 x 3.04M  
11'11" x 10'



Floor Plan produced for Tavistock Bow by Mays Floorplans ©. Tel 020 3397 4594  
Illustration for identification purposes only, not to scale.

**tavistockbow**

21 New Row, Covent Garden,  
London, WC2N 4LE

t: 020 7477 2177  
e: hello@tavistockbow.com  
w: tavistockbow.com



**Mercer Street, Covent Garden WC2**