



£250,000

TENURE : LEASEHOLD

Brownlow Close, NEW BARNET EN4

Bedrooms : 1

Bathrooms : 1

Reception Rooms : 0

**SPACIOUS ONE BEDROOM
LOFT SPACE**

**977 LEASE REMAINING
ALLOCATED PARKING**

**LARGE LOUNGE
FITTED KITCHEN**

Mantlestates
2A Church Hill Road, East Barnet, EN4 8TB
office@mantlestates.com |

0208 275 1555





Mantlestates are pleased to offer this SPACIOUS ONE BEDROOM FLAT with ALLOCATED PARKING. Located in a quiet location and easy access to East & New Barnet's shopping facilities & transport links. Boasting a very long lease (977 years). Ideal buy to let or first-time buyers. **MUST BE SEEN.**

ENTRANCE HALL: 7' 04" x 7' 06" (2.24m x 2.29m)

Radiator, carpet, entry phone

STORAGE CUPBOARD: 2' 06" x 3' 03" (0.76m x 0.99m)

LOUNGE: 15' 06" x 12' 09" (4.72m x 3.89m)

Double glazed window to front aspect, carpet, radiator.

KITCHEN: 7' 01" x 8' 06" (2.16m x 2.59m)

Wall and base kitchen units, electric hob, electric oven, extractor, plumbed for washing machine, fitted dishwasher, stainless steel sink drainer with mixer tap, spotlights.

BATHROOM: 7' 02" x 6' 02" (2.18m x 1.88m)

Radiator, low-level flush water closet, wash hand basin with mixer tap in vanity unit, panel bath with mixer tap & shower attachment, part tiled walls.

BEDROOM: 15' 06" x 9' 02" (4.72m x 2.79m)

Double glazed window to front aspect, carpet, fitted wardrobes, storage cupboard housing gas central heating boiler, loft access.

Mantlestates

2A Church Hill Road, East Barnet, EN4 8TB

office@mantlestates.com |

0208 275 1555



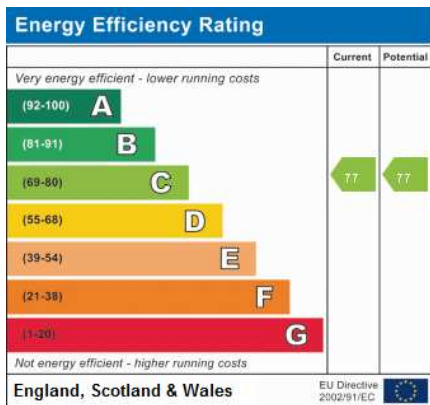
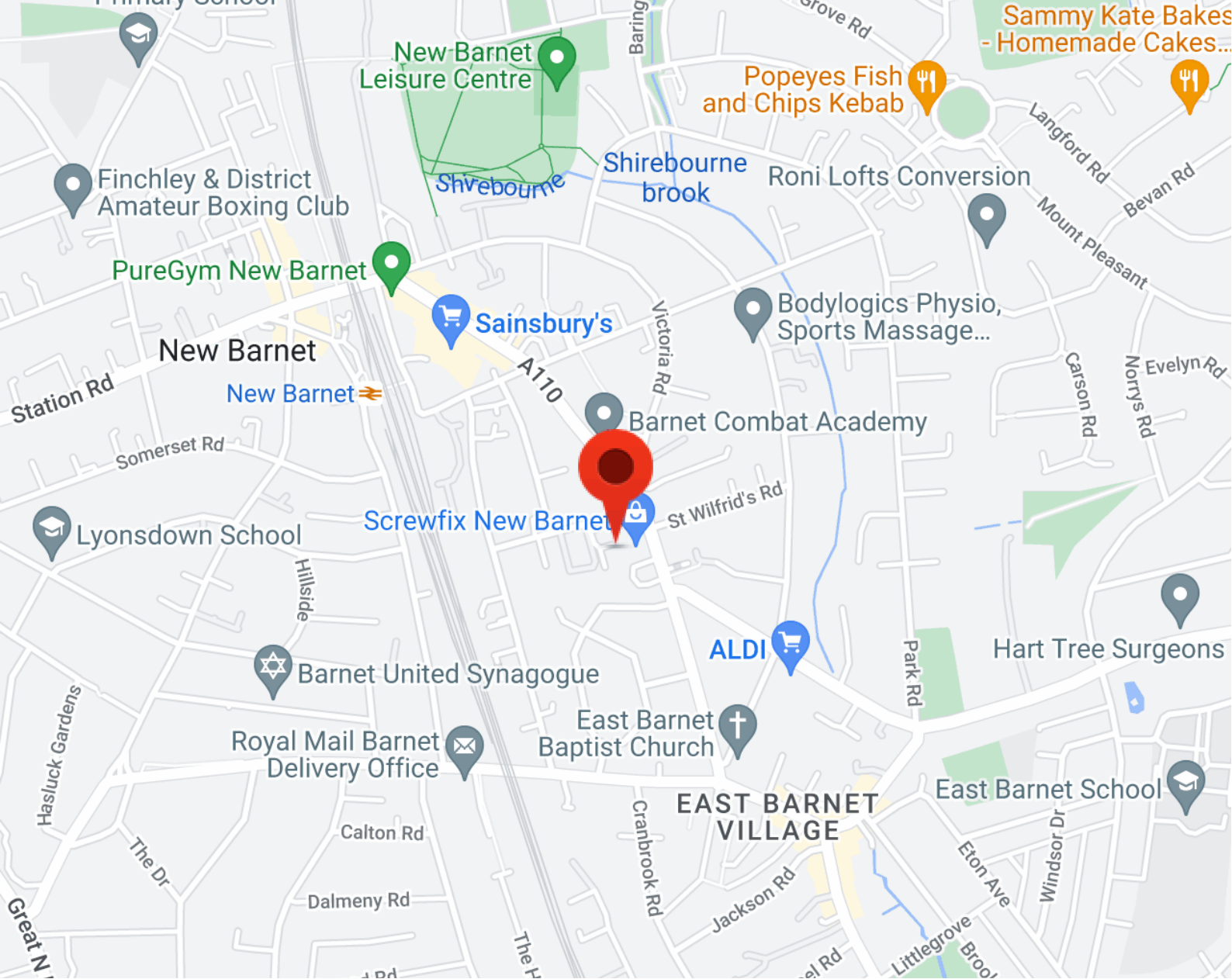




Mantlestates
2A Church Hill Road, East Barnet, EN4 8TB
office@mantlestates.com |

0208 275 1555





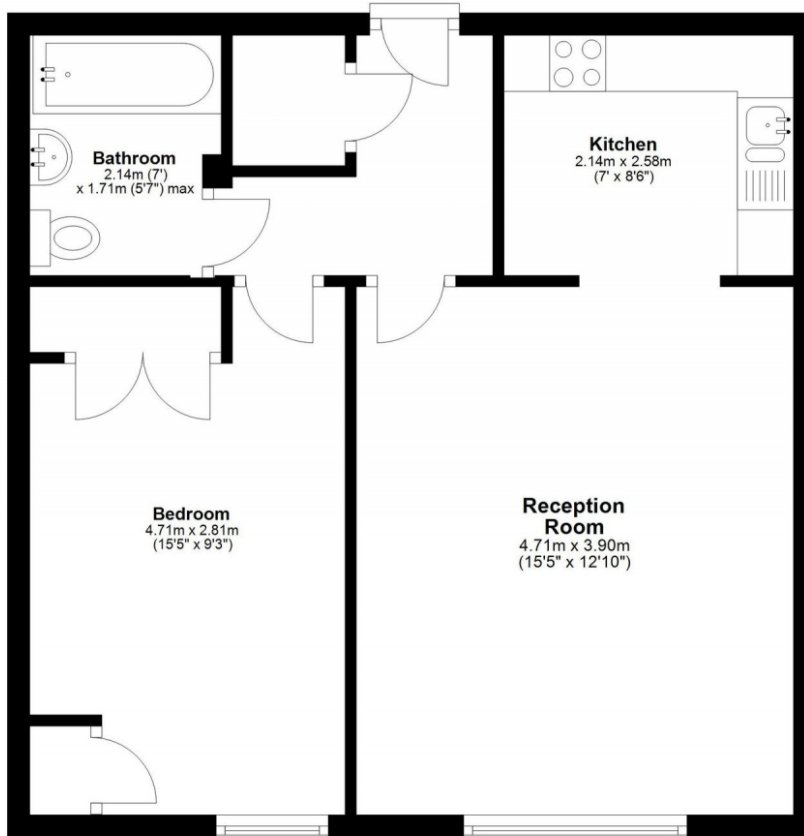
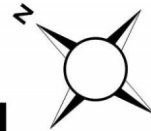
Mantlestates
 2A Church Hill Road, East Barnet, EN4 8TB
 office@mantlestates.com |

0208 275 1555



Second Floor

Approx. 47.1 sq. metres (507.1 sq. feet)



Total area: approx. 47.1 sq. metres (507.1 sq. feet)

Floor Plan measurements are approximate and are for illustrative purposes only.

