



Elgin Avenue

Kenton, Harrow, HA3 8QN

£529,950

A 3 bedroom extended semi detached house located in a popular residential road close to Belmont Circle for shops and bus routes.

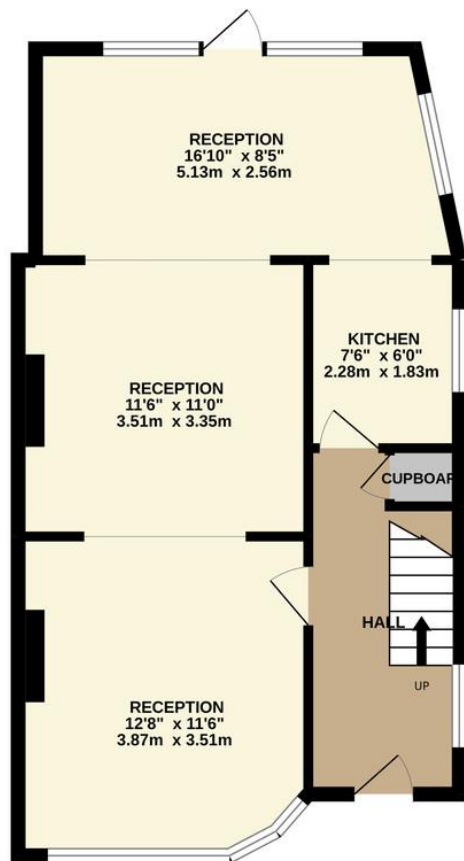
In need of total refurbishment. No upper chain. No Central Heating so not suitable for any buy to let mortgages.

Local schools are Priestmead and St Joseph's.

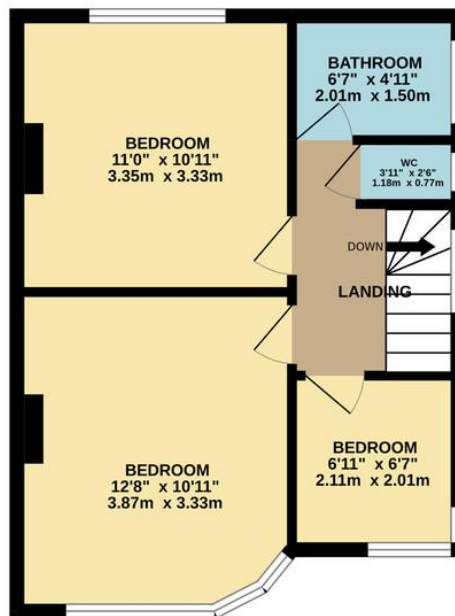
EPC Rating: F



GROUND FLOOR
526 sq.ft. (48.8 sq.m.) approx.



1ST FLOOR
392 sq.ft. (36.4 sq.m.) approx.



TOTAL FLOOR AREA : 917 sq.ft. (85.2 sq.m.) approx.

Whilst every attempt has been made to ensure the accuracy of the floorplan contained here, measurements of doors, windows, rooms and any other items are approximate and no responsibility is taken for any error, omission or mis-statement. This plan is for illustrative purposes only and should be used as such by any prospective purchaser. The services, systems and appliances shown have not been tested and no guarantee as to their operability or efficiency can be given.
Made with Metroplex ©2022



EPC Rating: F

Belmont Circle Office
506 Kenton Lane
Harrow
Middlesex
HA3 8RD

www.blacklarsestateagents.co.uk
0208 907 7701
sales@blacklarsestates.co.uk

Agents Note: Whilst every care has been taken to prepare these particulars, they are for guidance purposes only. All measurements are approximate and for general guidance purposes only and whilst every care has been taken to ensure their accuracy, they should not be relied upon and potential buyers/tenants are advised to recheck the measurements