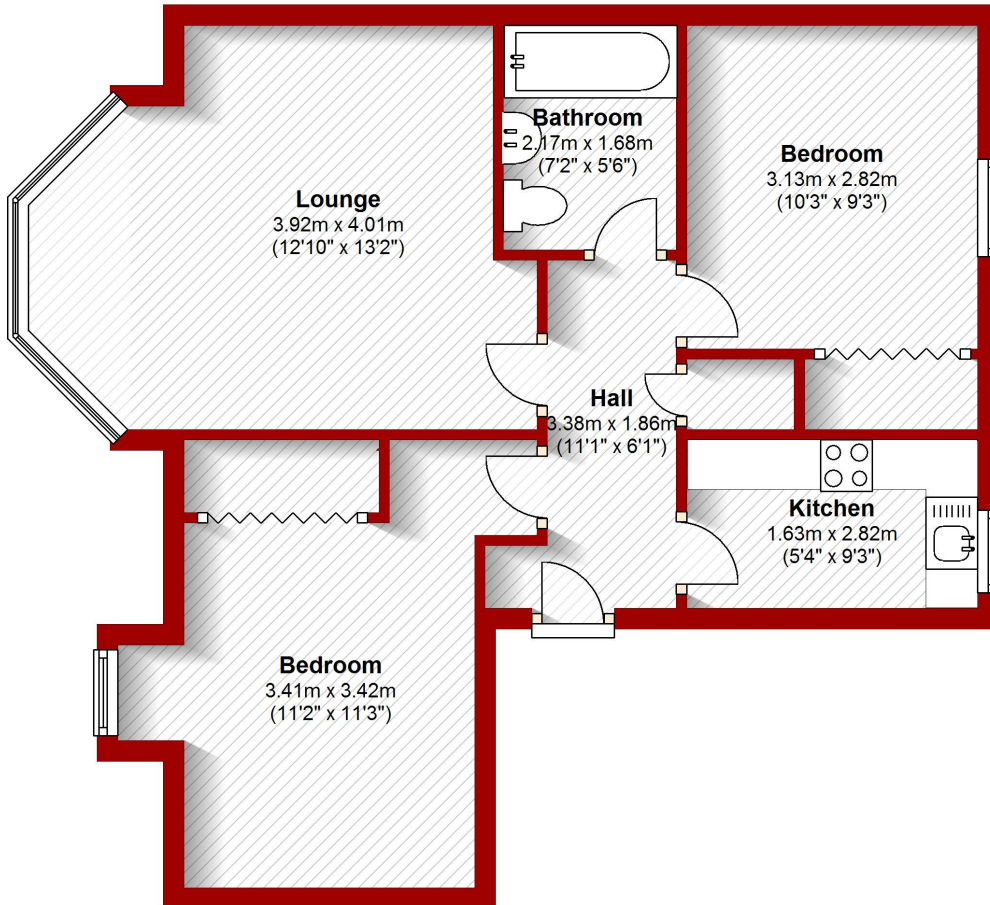


451g Holburn Street
Balmoral Mews
Aberdeen

Ground Floor

Approx. 52.1 sq. metres (561.0 sq. feet)



Total area: approx. 52.1 sq. metres (561.0 sq. feet)

The above particulars are for guidance only. No liability for any errors or omissions will be accepted by Aberdeen Property Leasing Ltd.