



Nassau House, Shaftesbury Avenue, Soho, London

£675 pw

› 2 Bedrooms › 1 Bathroom › Unfurnished

TAVISTOCKBOW
RESIDENTIAL



- › Two bedrooms (double & single)
- › Modern bathroom
- › Modern open-plan kitchen
- › Wood floors throughout
- › Secondary glazing
- › Unfurnished
- › 1st Floor (walk-up)
- › On the borders of Covent Garden & Soho
- › Available early June
- › Close Leicester square tube

A modern two bedroom, one shower room apartment to rent in this residential block located on Shaftesbury Avenue. The property is located on the 1st floor (no lift) and provides bright and spacious accommodation ideal for a couple or single person wanting extra space.

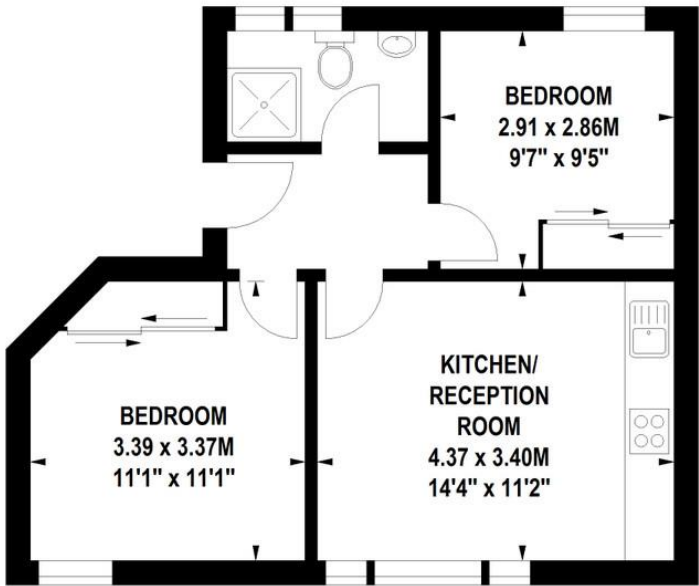




Nassau House, W1D

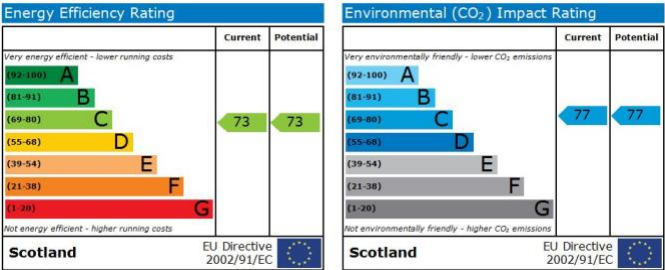
Approximate gross internal area

43 sq m / 463 sq ft



First Floor




Floor Plan produced for Tavistock Bow by Mays Floorplans © . Tel 020 3397 4594
Illustration for identification purposes only, not to scale
All measurements are maximum, and include wardrobes and window bays where applicable



About Us

Tavistock Bow is an independent residential agency based in Covent Garden. We are niche, boutique, creative, knowledgeable, professional and approachable. We love what we do and that's why we do it.

Contact Us

- a. 21 New Row, Covent Garden,
 - t. WC2N 4LE
 - e. 020 7477 2177
 - w. hello@tavistockbow.com
tavistockbow.com
-  /tavistockbow
 /tavistockbow
 @tavistockbow