



Gamewell Close, Norwich

£795 pcm - Tenancy Info

Energy Efficiency Rating : C

- ✓ First Floor Flat
- ✓ Permit Parking
- ✓ Brick Built Storage Shed
- ✓ Open Plan Sitting/Dining Room
- ✓ Fitted Kitchen
- ✓ Two Bedrooms
- ✓ Family Bathroom
- ✓ Double Glazing & Central Heating

To arrange an accompanied viewing please call our Centralised Hub on 01603 336116





Set in the SOUGHT AFTER NR1 location within WALKING DISTANCE to LOCAL AMENITIES and REGULAR BUSESSES into the CITY CENTRE you will find this SPACIOUS flat with uPVC DOUBLE GLAZED WINDOWS and GAS FIRED CENTRAL HEATING. Once inside you will find an ENTRANCE HALL with AMPLE SPACE to STORE COATS and SHOES, 18' SITTING/DINING ROOM which offers FANTASTIC SPACE to RELAX and ENTERTAIN, a 11' KITCHEN with space for a cooker, washing machine, fridge/freezer and STORAGE CUPBOARD. An inner hall leads to the TWO DOUBLE BEDROOMS with BOTH offering FITTED WARDROBES, a THREE PIECE FAMILY BATHROOM and STORAGE CUPBOARDS completes the flat. Adjacent to the property you will find the ALLOCATED STORAGE SHED, with ON ROAD PARKING found near the property on a PERMIT BASIS.

LOCATION

Located on the fringes of Norwich City Centre to provide an urban retreat, whilst being far enough away from the hustle and bustle, but within convenient walking distance to the football ground, train station and Riverside complex. A number of pubs, cafes, restaurants, cinema and bars can be found along with a fantastic shopping outlet. Easy access to main road links can be found in particular the A11 and A47.

DIRECTIONS

You may wish to use your Sat-Nav (NR1 2RP), but to help.... Leaving Norwich City Centre on Queens Road heading towards the a47, turn right onto Hall Road just

after a set of traffic lights and follow this road almost to the end, turning left onto Latimer Road, and left again onto Gamewell Close. The property can be found on your right hand side.

The property is approached via a communal staircase which leads to the main property.

ENTRANCE PORCH

Vinyl flooring, uPVC obscure double glazed window to front, smooth ceiling, door to:

SITTING/DINING ROOM

18' 7" x 14' 2" Max (5.66m x 4.32m) Fitted carpet, radiator, uPVC double glazed window to front, television point, coved ceiling, doors to:

KITCHEN

11' 6" x 7' 4" (3.51m x 2.24m) Fitted range of wall and base level units with square edged work surfaces and inset stainless steel sink and drainer unit with mixer tap, tiled splash backs, space for electric or gas cooker, space for washing machine, vinyl flooring, uPVC double glazed window to front, wall mounted gas fired central heating boiler, built-in storage cupboard, smooth ceiling.

INNER HALL

Fitted carpet, built-in storage cupboard, built-in airing cupboard, smooth ceiling with loft access hatch, doors to:

DOUBLE BEDROOM

12' 10" x 11' 8" Max (3.91m x 3.56m) Fitted carpet, radiator, uPVC double glazed window to rear, built-in double wardrobe, smooth ceiling.

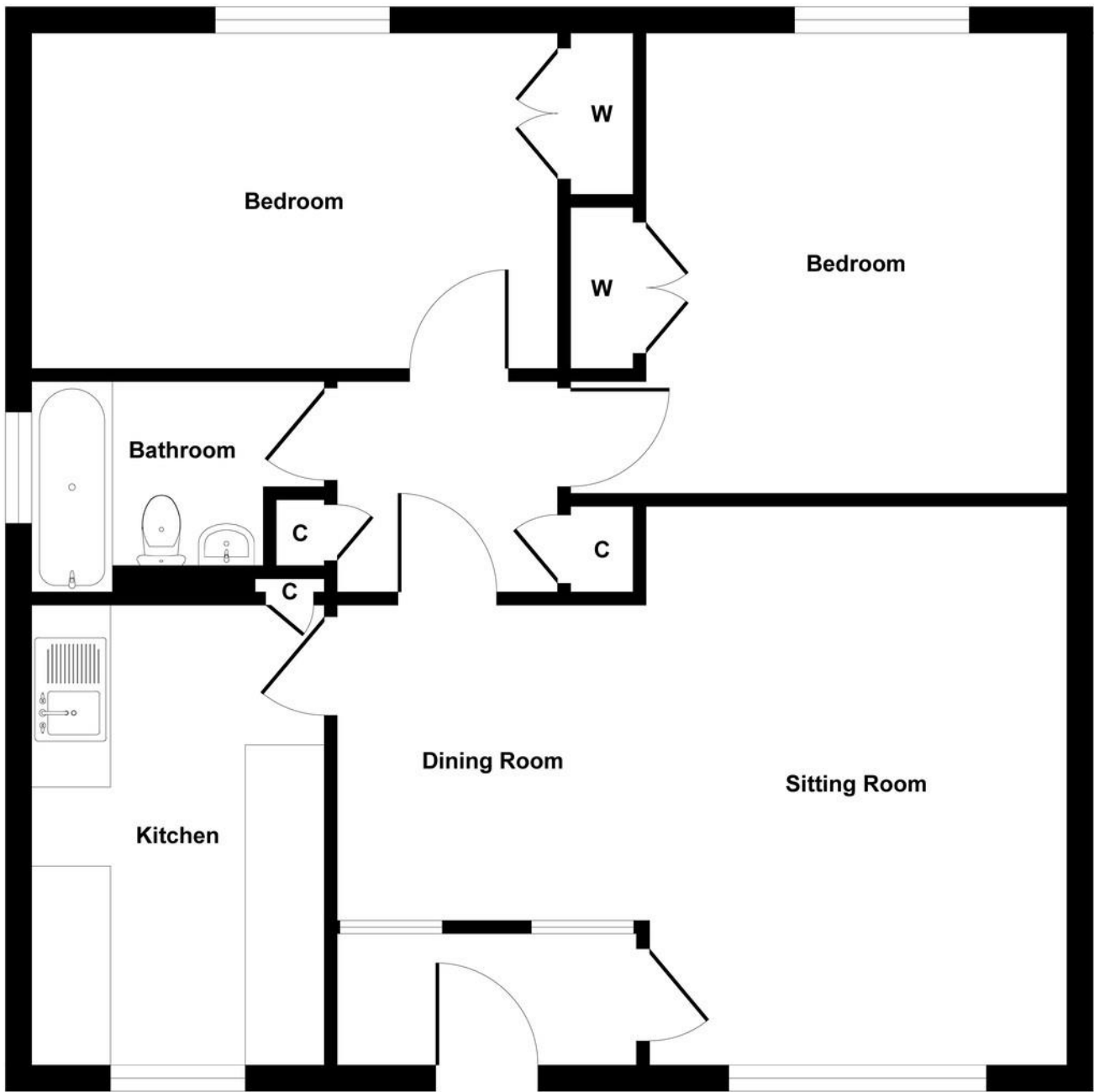
DOUBLE BEDROOM

13' 4" x 8' 6" (4.06m x 2.59m) Fitted carpet, radiator, uPVC double glazed window to rear, built-in double wardrobe, smooth ceiling.

FAMILY BATHROOM

9' 9" x 5' 7" Max (2.97m x 1.7m) Three piece suite comprising low level W.C, wall mounted hand wash basin, panelled bath, tiled splash backs, wall mounted vanity mirror, vinyl flooring, radiator, uPVC obscure double glazed window to side, smooth ceiling.





Floor Plan
Approximate Floor Area
686 sq. ft
(63.73 sq. m)

Approx. Gross Internal Floor Area 686 sq. ft / 63.73 sq. m



Agents Note: Whilst every care has been taken to prepare these sales particulars, they are for guidance purposes only. All measurements are approximate and are for general guidance purposes only and whilst every care has been taken to ensure their accuracy, they should not be relied upon and potential buyers are advised to recheck the measurements

Centralised Hub:

Crafton House | Rosebery Business Park | Mentmore Way | Poringland | Norwich | NR14 7XP

01603 336116 | sales@starkingsandwatson.co.uk | lettings@starkingsandwatson.co.uk



SWEA Ltd t/a Starkings & Watson. Company Registration Number 10386501
 Registered Office 45a Birchfield Lane, Mulbarton NR14 8AA
 VAT Registration Number 253 994 172