

PHILLIPS & STUBBS



coastal +
COUNTRY



The property is well situated within the Conservation Area of the medieval town of Rye, occupying a prominent position at the base of Mermaid Street in the Strand Quay area in a good retailing position adjacent to other retail units, guest houses and art/antique galleries. The Ancient Town and Cinque Port is renowned for its historical associations, medieval fortifications, including the Landgate and Ypres Tower, and fine period architecture with half-timbered houses clustered around the Parish Church of St Mary the Virgin with its ornate gilded Quarter Boys clock and 18th century Town Hall with open arcaded lower storey and cupola on the roof. From the town there are local train services to Brighton and to Ashford International, from where there are high speed connections to London St Pancras in 37 minutes. The M20 may be joined at Ashford via the improved and upgraded A2070 and A259. Rye attracts visitors from throughout the UK, Europe, America and the Far East.

A ground floor purpose built lock up retail unit with front and side display windows. Total useful floor area: 85 sq.m.

Lease details in summary:

Term 125 years from 1988

Ground Rent: Peppercorn

Permitted trading hours: Normal business opening hours but not to open after 7pm on any day

Reason for sale: Retirement after 24 years continuous trading.

Permitted use: As a retail shop but other uses aside from catering and food could be considered subject to approval by the freeholder.

The long lease is subject to outgoings and contributions. A copy of the full lease is available upon request.

Local Authority: Rother District Council 01424 787730. Rateable Value £8,700. Uniform Business Rate Multiplier for 2022-2023: 49.9. Current business rates payable approximately £4341* pa.

*The property is currently eligible for Small Business Rate Relief whereby no business rates are payable. All interested parties should verify the information prior to entering into a commitment.

Guide price: £195,000 Long leasehold

Shop Unit 1, Strand Court, Strand Quay, Rye, East Sussex TN31 7AY

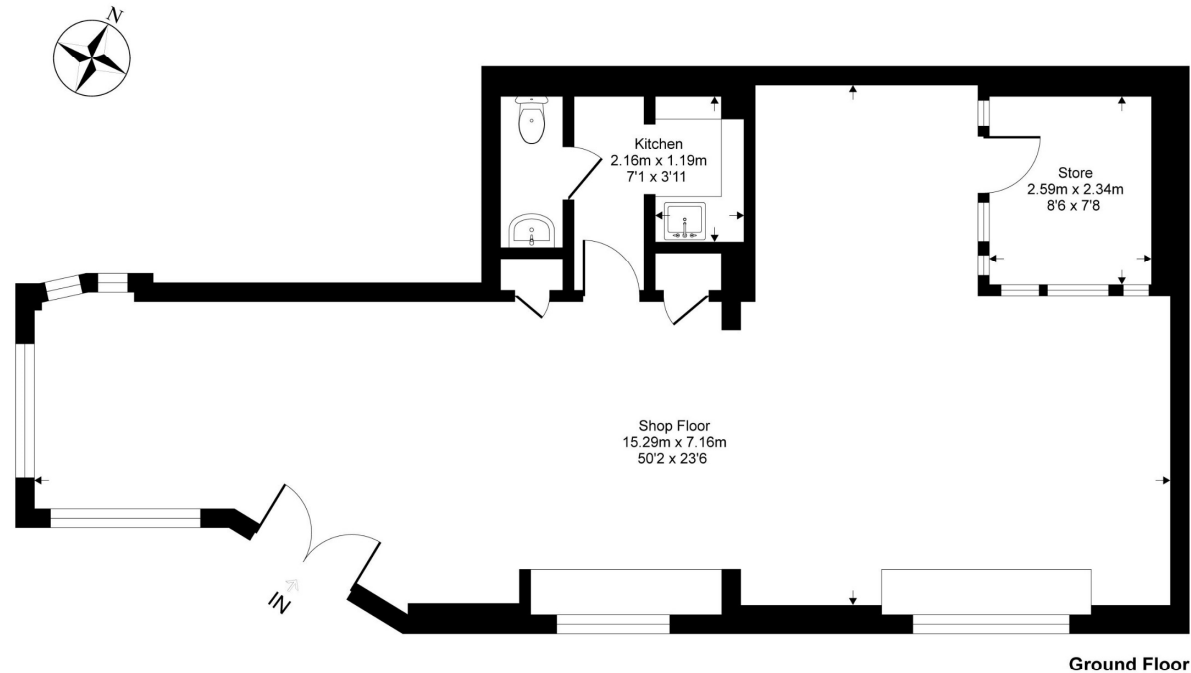


A modern purpose built retail unit occupying a prominent trading position on the Strand Quay in the Conservation Area of the Ancient Town of Rye.

- Large open plan retail area
- Store
- Kitchen
- Cloakroom
- Electric Heating
- EPC rating C

Strand Court, TN3

Approximate Gross Internal Area = 85 sq m / 920 sq ft



This floor plan is for representation purposes only as defined by the RICS code of Measuring Practice (and IPMS where requested) and should be used as such by any prospective purchaser. Whilst every attempt has been made to ensure the accuracy contained here, the measurement of doors, windows and rooms is approximate and no responsibility is taken for any error, omission or mis-statement. Specifically no guarantee is given on the total area of the property if quoted on the plan. Any figure provided is for guidance only and should not be used for valuation purposes.

Copyright Casaphotos Ltd. 2022 - Produced for Phillips and Stubbs

Viewing Arrangements : Strictly by appointment with Phillips & Stubbs

Important Notice:

Phillips & Stubbs, their clients and any joint agents give notice that:

1. They are not authorised to make or give any representations or warranties in relation to the property either here or elsewhere, either on our own behalf or on behalf of their clients or otherwise. They assume no responsibility for any statement that may be made in these particulars. These particulars do not form part of any offer or contract and must not be relied upon as statements or representations of fact.
2. These particulars have been provided in good faith and, whilst we endeavour to make them accurate and reliable, if there are any points of particular importance to you please contact our office and we will make further enquiries on your behalf. Any areas, measurements or distances are approximate. The text, photographs and plans are for guidance only and are not necessarily comprehensive. It should not be assumed that the property has all necessary planning, building regulation or other consents regarding alterations. Phillips and Stubbs have not tested any services, equipment or facilities. Purchasers must satisfy themselves by inspection or otherwise. All contents, fixtures, fittings and electrical appliances are expressly excluded from the sale unless specifically mentioned in the text of the sales particulars. A wide angle lens has been used in the photography.



47-49 Cinque Ports Street, Rye, East Sussex TN31 7AN
Mayfair Office, 15 Thayer Street, London W1U 3JT

01797 227338
0870 1127099

rye@phillipsandstubbs.co.uk
mayfair@phillipsandstubbs.co.uk

www.phillipsandstubbs.co.uk