



- VIA TENANT
- KEYS COMING
- Large bedroom
- Close to station

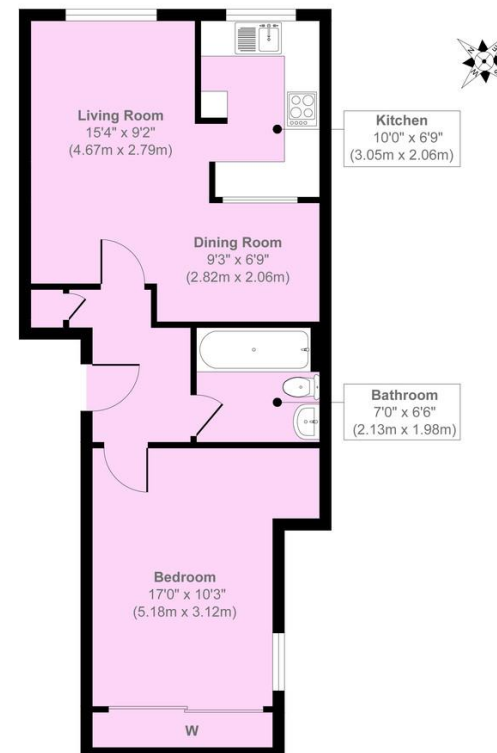
Armoury Road, Deptford, London SE8 4LB

£1,250 pcm

One bedroom furnished flat. Situated on the second floor of a three storey purpose built modern block, this larger than average one bedroom flat has the highest quality decor and furnishings throughout. Laminated flooring to hall, lounge, dining area and bedroom. Full length mirrored fitted wardrobes. Luxury Beech fitted kitchen inc: dishwasher, washing machine, large fridge/freezer, built-in electric oven, ceramic hob and extractor. A standard white three piece bathroom suite with shower over bath. A stones throw from Everston Road DLR or a short walk to Lewisham mainline station and DLR.



Armoury Road



Second Floor
Approximate Floor Area
559 sq. ft
(51.93 sq. m)

Mark Beaumont

Approx. Gross Internal Floor Area 559 sq. ft / 51.93 sq. m

Illustration for identification purposes only, measurements are approximate, not to scale.
Copyright © markbeaumont.com
Produced by Elements Property

EPC OUTSTANDING

South London Branch, 197
Lewisham High Street, London,
SE13 6AA

www.markbeaumont.com
lettings@markbeaumont.com
020 8852 5000

Agents Note: Whilst every care has been taken to prepare these particulars, they are for guidance purposes only. All measurements are approximate and are for general guidance purposes only and whilst every care has been taken to ensure their accuracy, they should not be relied upon and we advise to recheck the measurements.