

Elegant 4 bedroom detached house refurbished to retain and enhance the Victorian features.

We have never seen such a beautifully restored home featuring so many modern conveniences whilst incorporating wonderful, reclaimed materials. The refurbishment specification is of the higher order and must be seen to fully appreciated. The new owners will enjoy a fabulous fitted kitchen with Ca' Pietra limestone flooring with under floor heating and bespoke hand made and hand painted units with granite work surfaces and glass splashback. There are 3 reception rooms, 3 bathrooms, utility room and several large storage cupboards. Double length garage, fabulous York Stone flags in front garden and a large beautiful rear garden.



GUIDE PRICE

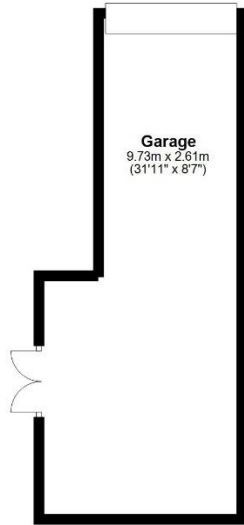
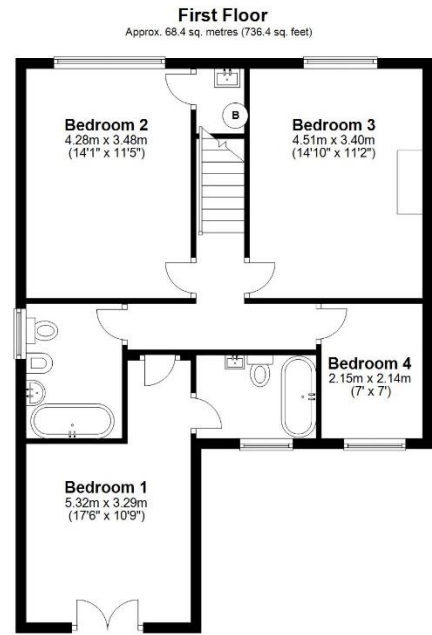
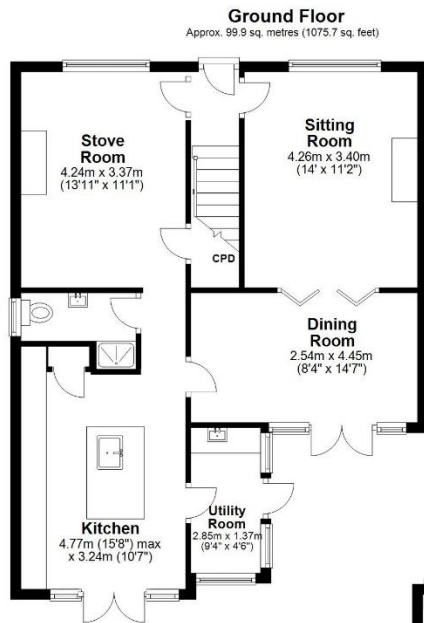
£1,075,000

Priory House, 35 Priory Road, Reigate, RH2 8JA

- Established Wisteria on front elevation.
- Tandem double garage with workshop area.
- Handmade kitchen with black granite surfaces and high-end appliances.
- Quality ceiling speakers to kitchen and dining room.
- Bespoke plaster cornicing throughout.
- Reclaimed cast iron radiators.
- Original Victorian cast iron baths.
- Stunning Blanco Carrara marble fireplace and granite hearth in sitting room.
- 2 Stovax wood burning stoves.



PRS Property Redress Scheme



Total area: approx. 168.3 sq. metres (1812.0 sq. feet)

Produced by Lewis White, not to scale and indicative only
Plan produced using PlanUp.

Council tax band: E

EPC Rating: D



PRS Property Redress Scheme

lewis white