



Computer generated image for illustration purposes only, and are not technically accurate. Please enquire with our sales team to gain the technical plans.

## The Exe

A three bedroom home with a snug/study and off-road parking.

# The Exe

Plots: 9, 10, 11, 13, 14, 15, 16, 17 & 18

Spanning over three floors, this family home accommodates flexible living throughout to meet a variety of lifestyles. The Exe comprises an open plan kitchen and dining area, separate living room, a home office and an additional garden room offering space for the entire family to enjoy. A family bathroom and three bedrooms are located on the first floor, the master bedroom featuring an en-suite shower room. An enclosed rear garden and off-road parking are also included.

## Lower Ground Floor

Garden room: 4.69m x 4.10m 15' 4" x 13' 5"

## Ground Floor

Kitchen/Dining: 4.69m x 4.16m\* 15' 4" x 13' 7"\*

Snug/Study: 2.56m x 3.46m 8' 4" x 11' 4"

Cloakroom: 0.90m x 1.97m 2' 11" x 6' 5"

## First Floor

Master Bedroom: 2.74m x 3.35m 9' 0" x 11' 0"

En-suite: 1.86m x 2.48m\* 6' 1" x 8' 1"\*

Bedroom two: 2.60m x 3.12m 8' 6" x 10' 2"

Bedroom three: 2.00m x 3.16m 6' 6" x 10' 4"

Bathroom: 1.70m x 2.02m 5' 6" x 6' 7"

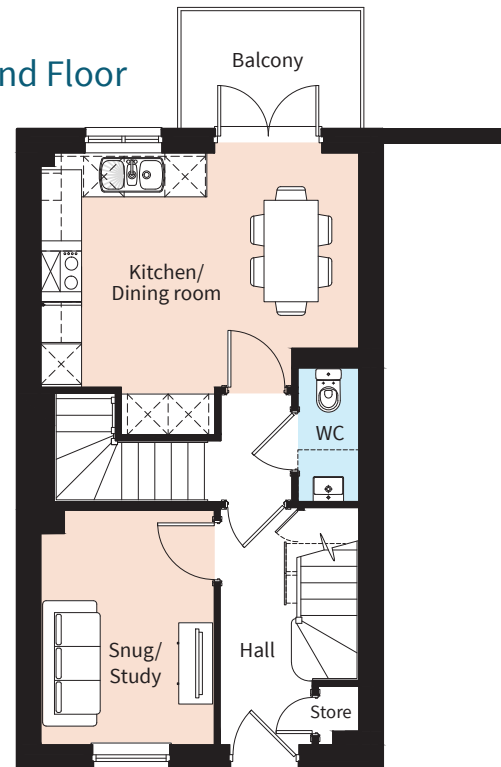
\*Max size

## Please Note

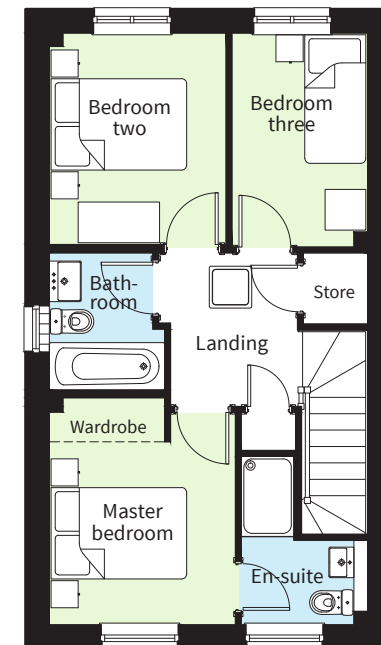
Floor plan for plots 14 & 16 shown.

The Balcony varies on plots 9, 10, 11, 13, 15, 17 & 18. Please refer to the detailed plans for plot specifics.

Ground Floor



First Floor



Lower Ground Floor

