



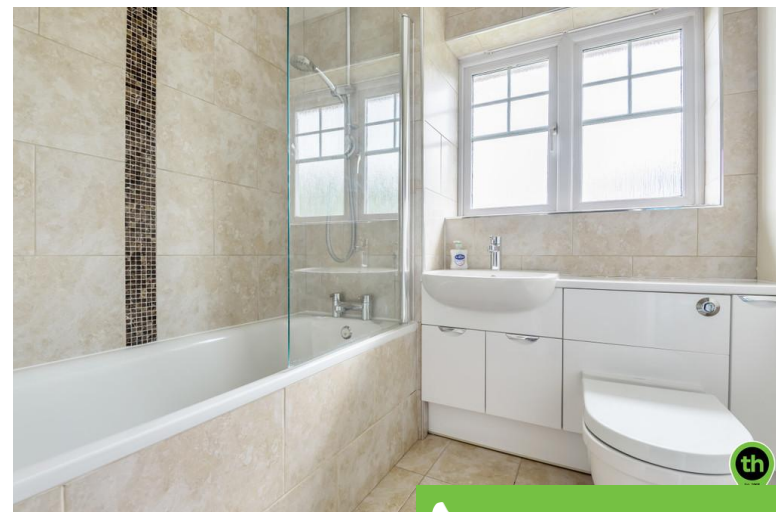
Larkspur Grove, Edgware

Guide Price £635,000

A modern townhouse located on a quiet cul-de-sac in a much sought after Edgware location.

Accommodation comprises of three double bedrooms with one en-suite and a family bathroom. There are also two spacious reception rooms and a modern open plan kitchen.

This property further benefits from having a garage and off street parking, plus a generous private garden.



 020 8958 2222

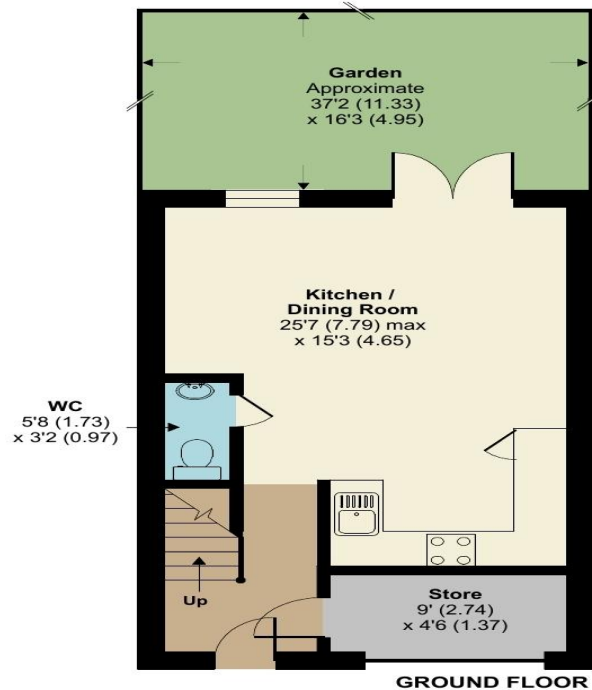
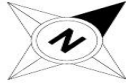
Larkspur Grove, Edgware, HA8

Approximate Area = 1140 sq ft / 105.9 sq m

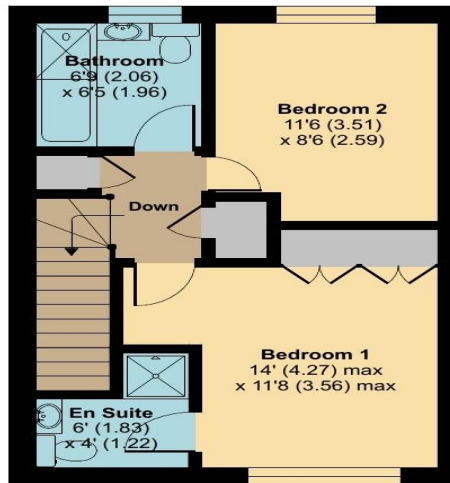
Outbuilding = 40 sq ft / 3.7 sq m

Total = 1180 sq ft / 109.6 sq m

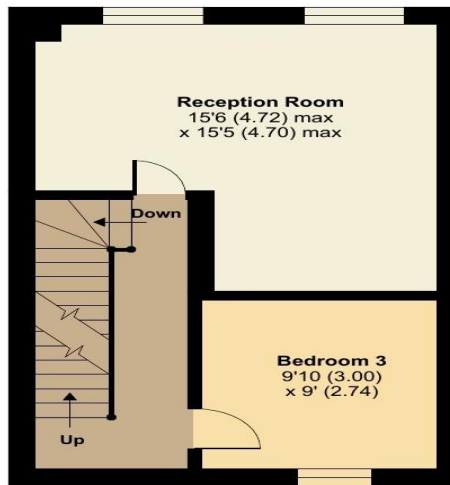
For identification only - Not to scale



GROUND FLOOR



SECOND FLOOR



FIRST FLOOR



[See how to improve this property's energy performance.](#)

Score	Energy rating	Current	Potential
92+	A		
81-91	B		86 B
69-80	C	71 C	
55-68	D		
39-54	E		
21-38	F		

58 Edgware Way
Edgware
Middlesex
HA8 8DJ

www.taylorhawkins.net
property@taylorhawkins.co.uk
020 8958 2222

Agents Note: Whilst every care has been taken to prepare these sales particulars, they are for guidance purposes only. All measurements are approximate are for general guidance purposes only and whilst every care has been taken to ensure their accuracy, they should not be relied upon and potential buyers are advised to recheck the measurements