



# ENNISMORE GARDENS



KNIGHTSBRIDGE SW7





## A BRIGHT AND CLASSIC TWO BEDROOM FLAT AVAILABLE FOR SALE IN KNIGHTSBRIDGE.

A classic apartment with an optimally-designed layout, benefiting from south-facing tree views, wonderful high ceilings and excellent natural light throughout. The apartment also offers a spacious double reception room, two bright double bedrooms with en suite bathrooms and large bay windows.

This rare quad-aspect flat is located on the third floor and offers direct lift access into the entrance and a key to the award-winning communal gardens. Ennismore Gardens is considered one of Knightsbridge's finest garden squares, conveniently located only a few hundred yards from Hyde Park to the north and the famous shops of Brompton Road to the south.

## FEATURES

- Leasehold with approximately 94 Years Remaining
- Two Double Bedrooms with En-Suite Bathrooms
- Two Reception Rooms
- Kitchen • Guest WC
- Balconies • Direct Lift Access to Flat
- Access to Communal Gardens

These details have been prepared for general guidance only and should not be relied upon by prospective purchaser/ tenants who before proceeding must check and otherwise satisfy themselves as to the property and the nature, state and availability of any facility or service.

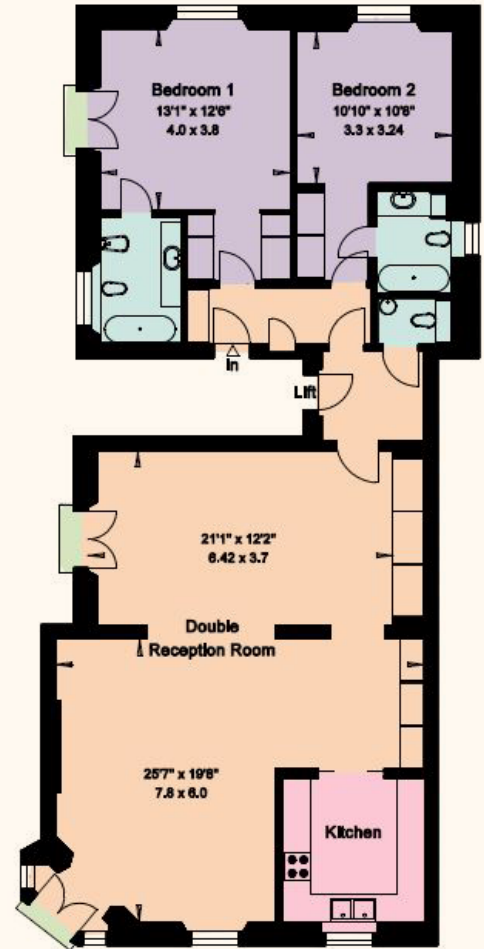


Brochure by TwentyOneFifty Tel: 020 8778 2150

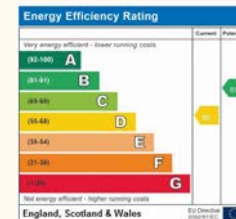
## ENNISMORE GARDENS



GROSS INTERNAL AREA (APPROX.)  
130 SQ. METERS, 1409 SQ. FEET



THIRD FLOOR



Price: £3,650,000

Tenure: Leasehold with approximately 94 years remaining

Service Charge: £7,800 per annum

**NVP**  
NICOLAS VAN PATRICK

6-8 MONTPELIER STREET,  
LONDON SW7 1EZ  
SALES | +44 (0)20 7581 8277  
LETTINGS | +44 (0)20 7590 1200  
info@nicolasvanpatrick.com  
www.nicolasvanpatrick.com

