



NEW BUILD INDUSTRIAL/BUSINESS UNITS TO LET

PHASE TWO COMPRISING:

UNITS 5, 6, 7, 8 & 9

PLOT F BUCKNELL WAY,

PATHFIELDS BUSINESS PARK, SOUTH MOLTON, NORTH DEVON EX36 3LH



Front (West) Elevation
1 : 100

North Elevation
1 : 100

RENT: FROM £9,522 p.a.x per unit

DESCRIPTION

The units will shortly be under construction with an estimated completion date of late 2024/ early 2025. High specification build, units from 1058 sq ft to 1506 sq ft. High eaves height to allow for mezzanine floor if required. Insulated roof and elevations with partial external brick work. Powered roller shutter door, 3 phase supply, LED lighting, fibre optic ducting and toilet. Available as combined units if required.

LEASE TERMS

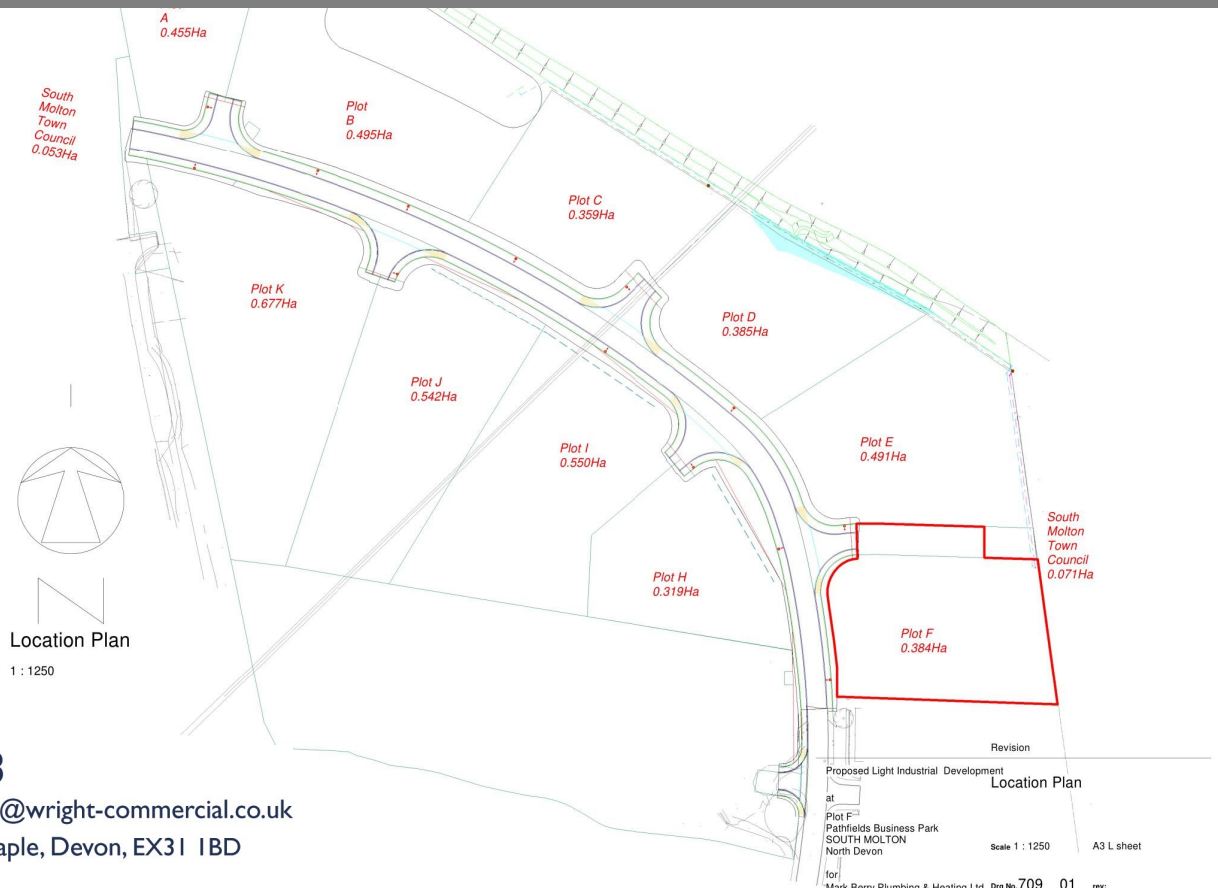
Full repairing and insuring terms. VAT is applicable to the rent and service charge.

SERVICE CHARGE

An annual estate service charge will be levied in respect of common area maintenance.

BUSINESS RATES

TBC.



01271 377333

F: 01271 326362 sales@wright-commercial.co.uk

19 Cross Street, Barnstaple, Devon, EX31 1BD