

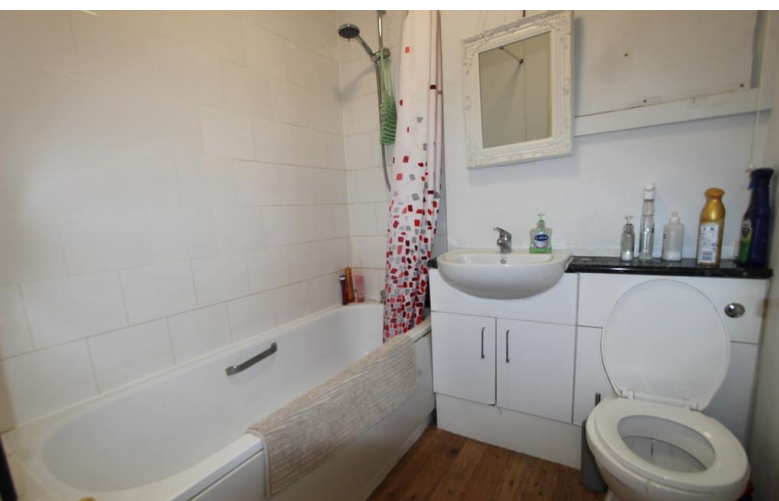


## Woodcote House Hitchin

**£650 pcm** \*Fees apply



- 13 Minute Walk To Train Station
- Located In The Town Centre
- All Bills Included
- Flat Share
- Modern Kitchen/Bathroom
- Balcony Overlooking St Mary's Church
- Students/Working Professionals
- Furnished





D+J presents this single bedroom within a shared apartment in Hitchin's town centre which is walking distance to the train station. The room comes furnished with a bed/mattress, wardrobe, bedside table and chest of drawers. The apartment has a modern shared bathroom and kitchen, with a balcony overlooking St Mary's Church. All bills are included in the rent - gas, electric, high speed internet, council tax and regular communal area cleaning.

**Viewings:** strictly by appointment with dj Lettings, Hitchin office \*For details of our fees please visit [www.djlettings.co.uk](http://www.djlettings.co.uk)



30 Sun Street, Hitchin  
Hertfordshire. SG5 1AH

t: 01462 455434  
[info@djlettings.co.uk](mailto:info@djlettings.co.uk)  
[www.djlettings.co.uk](http://www.djlettings.co.uk)



Free Property Appraisal • Full Management Service • Tenant Find Service • Tenant Reference Checks  
Rent & Legal Protection • Safety Regulation Advice • Tenancy Deposit Registration  
Client Money Protection • Buy to Let Advice • Estate Management Services