



Arden Garden, Union Road, Crediton, EX17 3AL

Offers Over **£400,000**

HELMORES
SINCE 1699

Arden Garden, Union Road

Crediton

- Contemporary high specification detached house
- Beautiful open-plan kitchen breakfast room with centre island
- Parking for 4 cars & low maintenance gardens
- Family bathroom & downstairs WC
- Remainder of its Architect's certificate
- Four bedrooms with an en-suite to the master
- Superbly presented throughout, built in 2017
- Spacious living room, conservatory and utility
- Mains gas underfloor central heating & double glazing
- Being sold with no onward chain

Arden Garden is contemporary detached house, built in 2017 by a well-regarded local builder as his family home and so was completed to a very high specification throughout in a handy central location within Crediton, within walking distance of the High Street shops & cafes, primary & secondary schooling and bus transport links.



HELMORES
SINCE 1699



The superbly presented accommodation extends to 1,320sqft / 122sqm, entering the house through the grey composite front door into the tiled entrance hall, the matching porcelain tiles continue into the large dual-aspect lounge (or lounge diner if you prefer) which is full of light. Adjoining is the stunning kitchen breakfast room, with vaulted ceiling to one end, a large centre island including a Quartz breakfast bar, Quartz worktops, plus integrated Neff induction hob, self-cleaning oven, combi-oven, dishwasher & wine chiller. Attached is a dining conservatory & a handy utility room, plus downstairs cloakroom with WC. Large polished porcelain tiles are found through the kitchen, utility & conservatory too.

Upstairs we find four bedrooms, with the master enjoying a vaulted ceiling, an en-suite, lovely fitted wardrobes & a full height feature window offering views to the church. There is also a family bathroom with shower & screen over the P-shaped bath, plus a laundry-shoot straight to the utility below! Aside of the conservatory there is zonal underfloor heating via a high-end Ideal mains gas combi-boiler, there is also grey double-glazed windows, electronically controlled skylights, an alarm system and remote access CCTV.



Outside to the front is a brick-paved parking area for four cars, a side gate leads to the gardens, found to the side (with views to the church) & rear. The garden is largely level, enclosed & low maintenance, with a mixture of paving and stone chippings, which could lawned if desired, the summer house and garden shed are also included.

The house comes with the remainder of its architect's certificate and is being sold with no onward chain.

Please see the floorplan for room sizes.

Current Council Tax: E (£2,671pa)

Utilities: Mains gas, electric, water, telephone & broadband

Broadband within this postcode: Superfast Enabled

Drainage: Mains drainage

Heating: Mains gas central heating

Listed: No

Tenure: Freehold

CREDITON : An ancient market town, with a contemporary feel – only a short, 20-minute drive NW from the city of Exeter. Set in the Vale of the River Creedy, amongst gentle, rolling hills and verdant pastures. Sincerely picture postcard. Once the capital of Devon, Crediton is famed for its inspiring sandstone church and for being the birthplace of Saint Boniface in 680 AD. Its high street is a vibrant place, abuzz with trade –artisan coffee shops, roaring pubs, a farmers’ market and bakeries, jam-packed with mouthwatering delights. For those commuting it has hassle free transport links into Exeter and for schooling a prestigious community college (Queen Elizabeth’s) – with an Ofsted “outstanding” sixth form. In addition, it boasts a brilliant gym & leisure centre for New Year’s resolutions, two supermarkets for the weekly shop and a trading estate for any practical needs. All neatly held in a single valley.

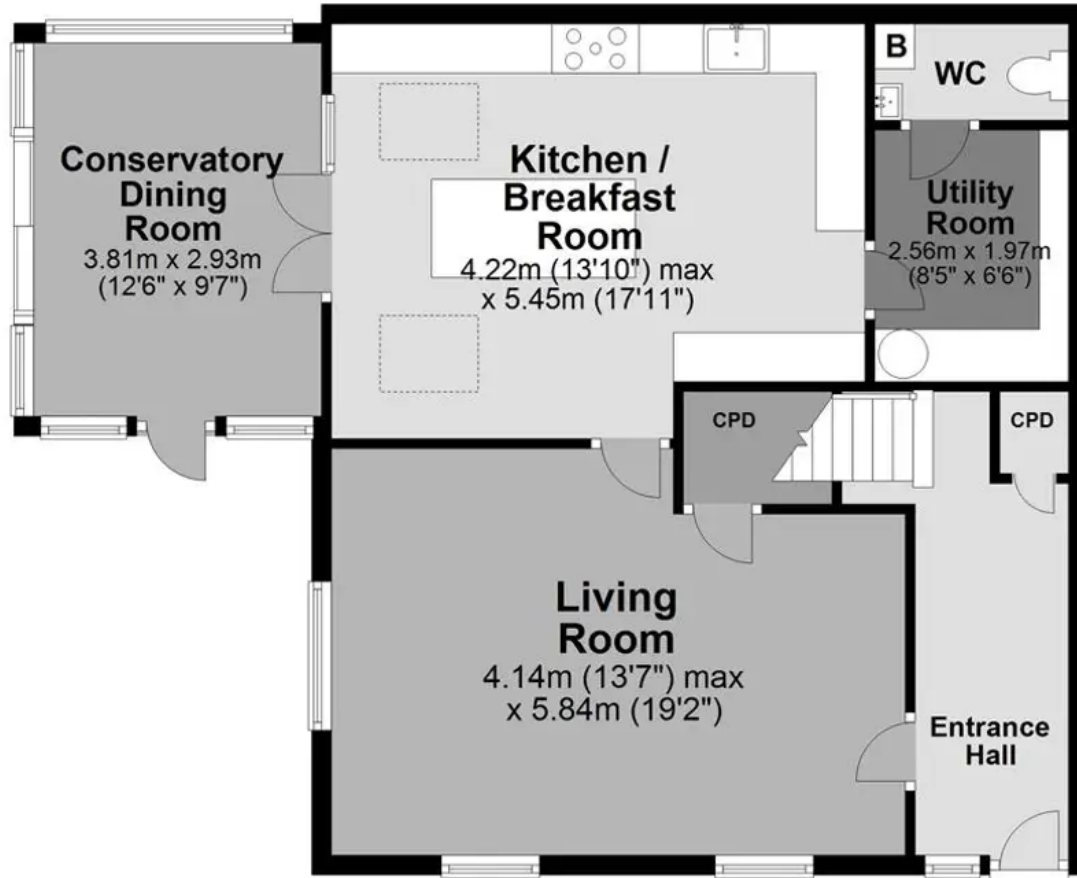
DIRECTIONS From Crediton High Street, proceed East down the town, passing The Bike Shed on your left, then take the driveway on your right & Arden Garden will be found up in front of you.

What3Words: [///extra.gravitate.showcases](https://www.what3words.com/extra-gravitate-showcases)



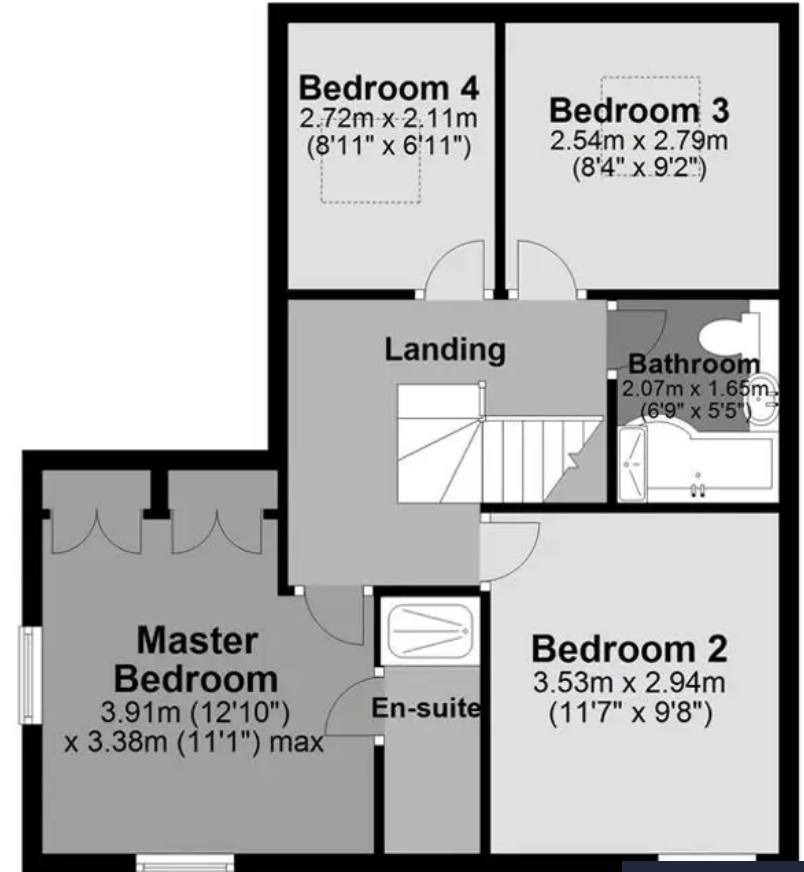
Ground Floor

Approx. 70.8 sq. metres (762.0 sq. feet)



First Floor

Approx. 51.9 sq. metres (558.3 sq. feet)



Total area: approx. 122.7 sq. metres (1320.3 sq. feet)



Helmores

Helmores, 111-112 High Street - EX17 3LF

01363 777 999

property@helmores.com

helmores.com/

HELMORES
SINCE 1699

These particulars are intended to give a fair and reliable description of the property but no responsibility for any inaccuracy or error can be accepted and do not constitute an offer or contract. We have not tested any services or appliances (including central heating if fitted) referred to in these particulars and the purchasers are advised to satisfy themselves as to the working order and condition. If a property is unoccupied at any time there may be reconnection charges for any switched off/disconnected or drained services or appliances - All measurements are approximate.