



A SPACIOUS, DETACHED FOUR BEDROOM BUNGALOW IN CHIPPERFIELD

Penmans Hill, Chipperfield, Kings Langley, Hertfordshire, WD4 9DJ

ROBSONS

KITCHEN/BREAKFAST ROOM • TWO RECEPTION ROOMS • DINING ROOM • STUDY • CONSERVATORY • UTILITY ROOM/STORAGE ROOM • THREE GROUND FLOOR BEDROOMS • GROUND FLOOR SHOWER ROOM • FIRST FLOOR BEDROOM • FIRST FLOOR BATHROOM • OWN DRIVEWAY • LARGE REAR GARDEN

Description

This spacious, detached four-bedroom chalet bungalow provides spacious accommodation, including four/five reception rooms and is set over two floors.

The ground floor has a welcoming entrance hallway with a guest cloakroom, a dining room, a study with fitted storage and a spacious double-aspect reception room with French doors opening out to the garden. There is also a light-filled conservatory with panoramic views of the beautiful garden.

The kitchen features a range of modern units providing ample storage space with integrated appliances, together with a breakfast bar overlooking the garden and a door through to the utility room/storage room.

Steps lead you to three well-appointed bedrooms together with a shower room.





To the lower ground floor there is a principal bedroom with fitted wardrobes and a modern bathroom with a bath and large shower cubicle.

Externally, this sizeable property boasts a beautifully presented and private rear garden that is laid to lawn with a variety of flower beds and trees and a large, raised patio area to enjoy al fresco dining in the summer months.

To the front there is a driveway providing off-street parking for multiple vehicles.

Location

Chipperfield is set within some of the most picturesque countryside with acres of woodland for keen walkers and horse riding. There are many active sports and social groups in the village, local pubs and village club, as well as an excellent primary school. Easy access to the M25, junction 20 and mainline railway stations at the nearby village of Kings Langley to London (Euston)

Additional Information

Tenure: Freehold

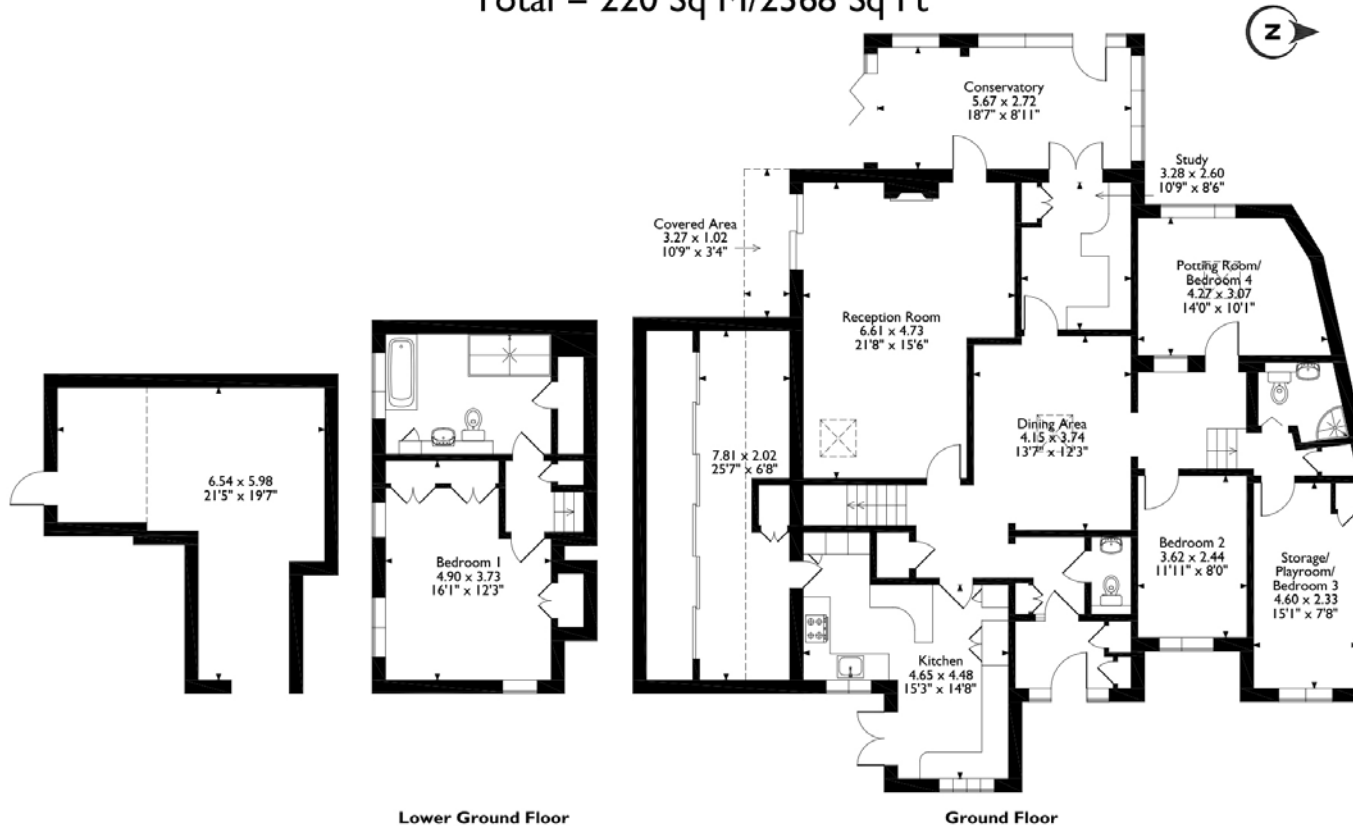
Local Authority: Three Rivers District Council

Council Tax: Band G

Energy Efficiency Rating: Band E



Penmans Hill Chipperfield, Kings Langley, Hertfordshire
 Approximate Gross Internal Area
 Main House = 194 Sq M/2088 Sq Ft
 Outbuilding = 26 Sq M/280 Sq Ft
 Total = 220 Sq M/2368 Sq Ft



Please note that the location of doors, windows and other items are approximate and this floorplan is to be used for illustrative purposes only. Unauthorized reproduction is prohibited.



2 New Road, Chorleywood, Hertfordshire, WD3 5NJ
 Tel: 01923 285525 Chorleywood@robsonswb.com
www.robsonswb.com

www.
 the
 londonoffice.co.uk
 40 ST JAMES'S PLACE SW1

Important notice: Robsons, their clients and any joint agents give notice that 1: They are not authorised to make or give any representations or warranties in relation to the property either here or elsewhere, either on their own behalf or on behalf of their client or otherwise. They assume no responsibility for any statement that may be made in these particulars. These particulars do not form part of any offer or contract and must not be relied upon as statements or representations of fact. 2: Any areas, measurements or distances are approximate. Plot sizes and dimensions are taken from Promap and are approximate. The text, photographs and plans are for guidance only and are not necessarily comprehensive. It should not be assumed that the property has all necessary planning, building regulation or other consents and Robsons have not tested any services, equipment or facilities. Purchasers must satisfy themselves by inspection or otherwise.