



 **2**
Bedrooms

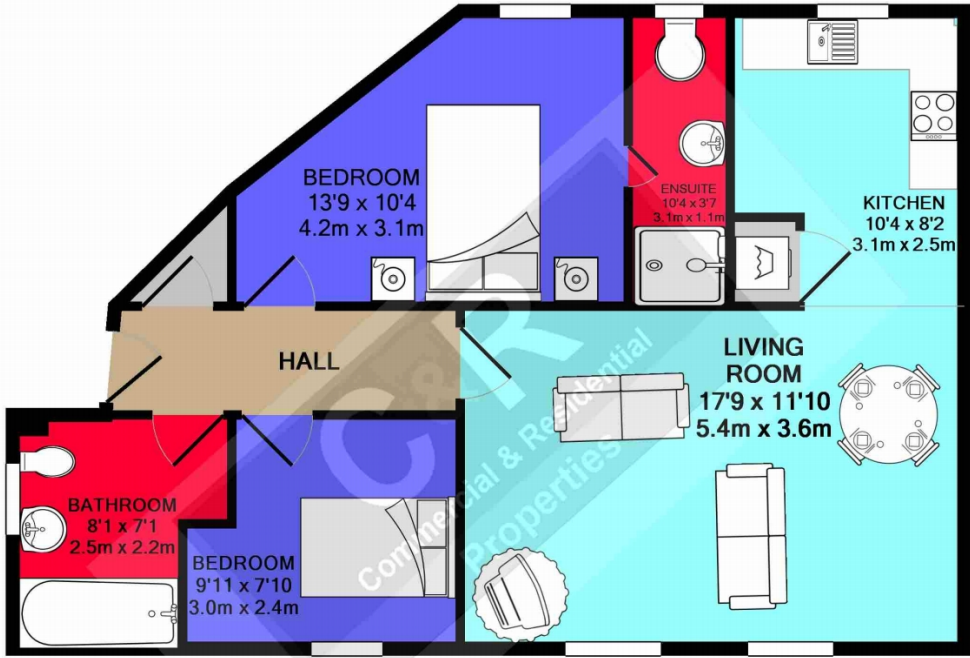
 **2**
Bathrooms



C & R HULME are delighted to offer this two double bedroom apartment at Loreto Place, Hulme. This 1st floor apartment benefits from double-glazing, gas central heating and secure parking space. The accommodation comprises; entrance hall, lounge, recently fitted kitchen, master bedroom with en-suite, main bathroom and 2nd double bedroom. Close to local amenities as well as good transport links, makes this property ideal for the first time buyer or an investor. **NO CHAIN!!!**

C & R HULME are delighted to offer this two double bedroom apartment at Loreto Place, Hulme. This 1st floor apartment benefits from double-glazing, gas central heating and secure parking space. The accommodation comprises; entrance hall, lounge, recently fitted kitchen, master bedroom with en-suite, main bathroom and 2nd double bedroom. Close to local amenities as well as good transport links, makes this property ideal for the first time buyer or an investor.

NO CHAIN!!!



Energy Efficiency Rating		
	Current	Potential
Very energy efficient - lower running costs		
(92-100) A		
(81-91) B	84	86
(69-80) C		
(55-68) D		
(39-54) E		
(21-38) F		
(1-20) G		
Not energy efficient - higher running costs		
England, Scotland & Wales		EU Directive 2002/91/EC



C & R PROPERTIES
TOTAL APPROX. FLOOR AREA 623 SQ.FT. (57.9 SQ.M.)

Whilst every attempt has been made to ensure the accuracy of the floor plan contained here, measurements of doors, windows, rooms and any other items are approximate and no responsibility is taken for any error, omission, or mis-statement. This plan is for illustrative purposes only and should be used as such by any prospective purchaser. The services, systems and appliances shown have not been tested and no guarantee as to their operability or efficiency can be given
Made with Metropix ©2017