



# Apt 3, Park Place 126-130 Valley Drive, Harrogate

Harrogate

Guide Price £295,000



# MYRINGS

Harrogate's Family Estate Agent



## Apartment 3

Park Place 126-130 Valley Drive,  
Harrogate

Offered with no onward chain, this vacant and spacious ground floor flat with private entrance to front and rear along with south west facing courtyard garden is located in a highly desirable position just off Cold Bath Road and opposite the Valley Gardens.

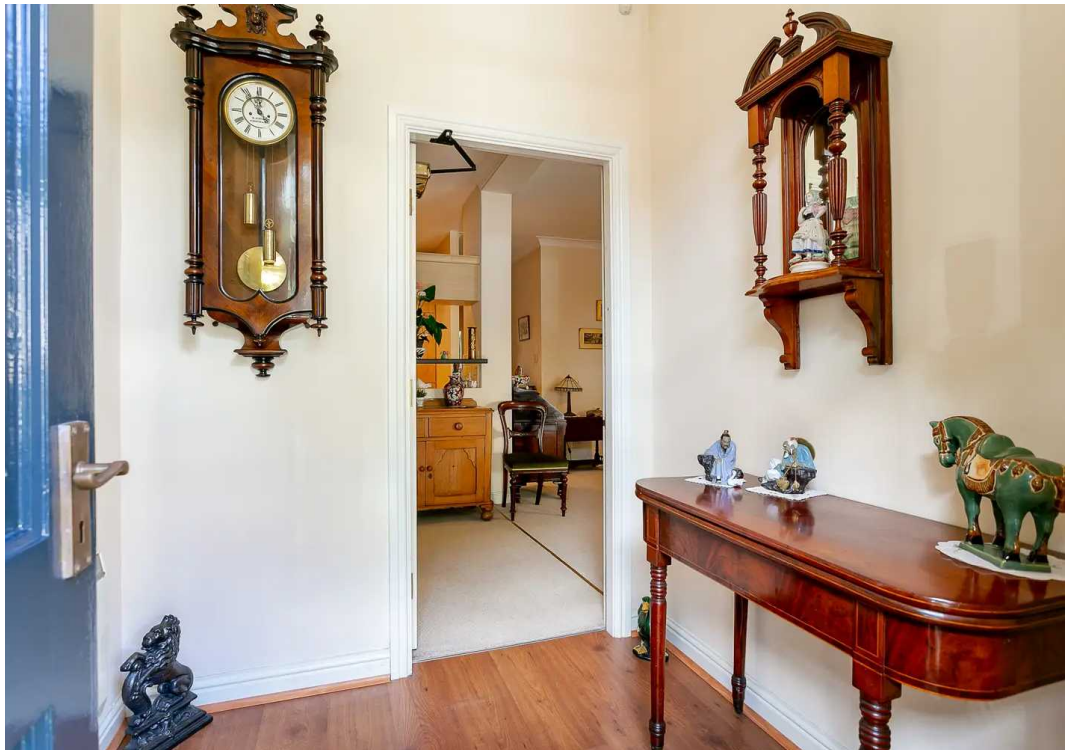
Council Tax band: D

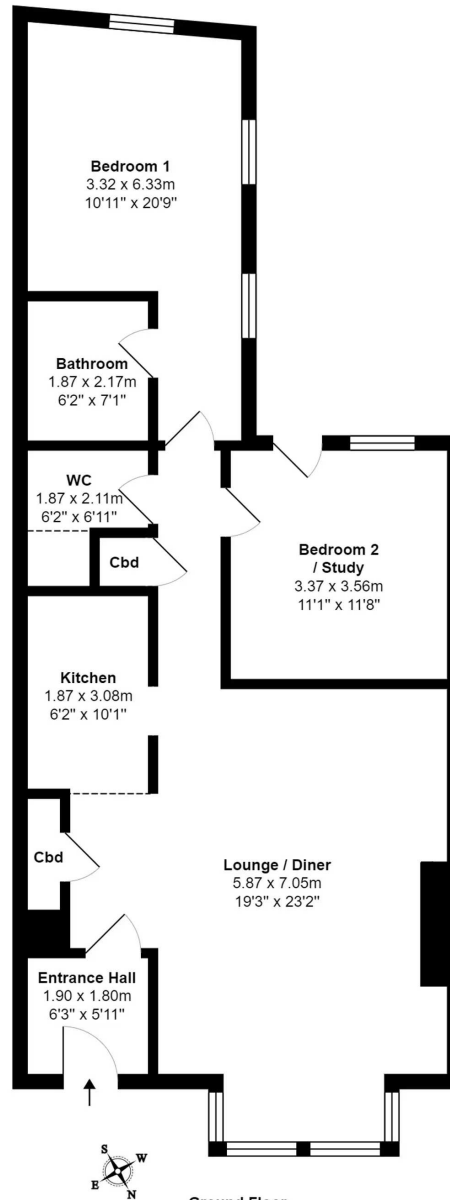
Tenure: Leasehold

- GROUND FLOOR
- NO CHAIN
- PRIVATE ENTRANCE
- SOUTH WEST FACING COURTYARD GARDEN
- 2 DOUBLE BEDROOMS
- VALLEY GARDENS LOCATION



MYRINGS

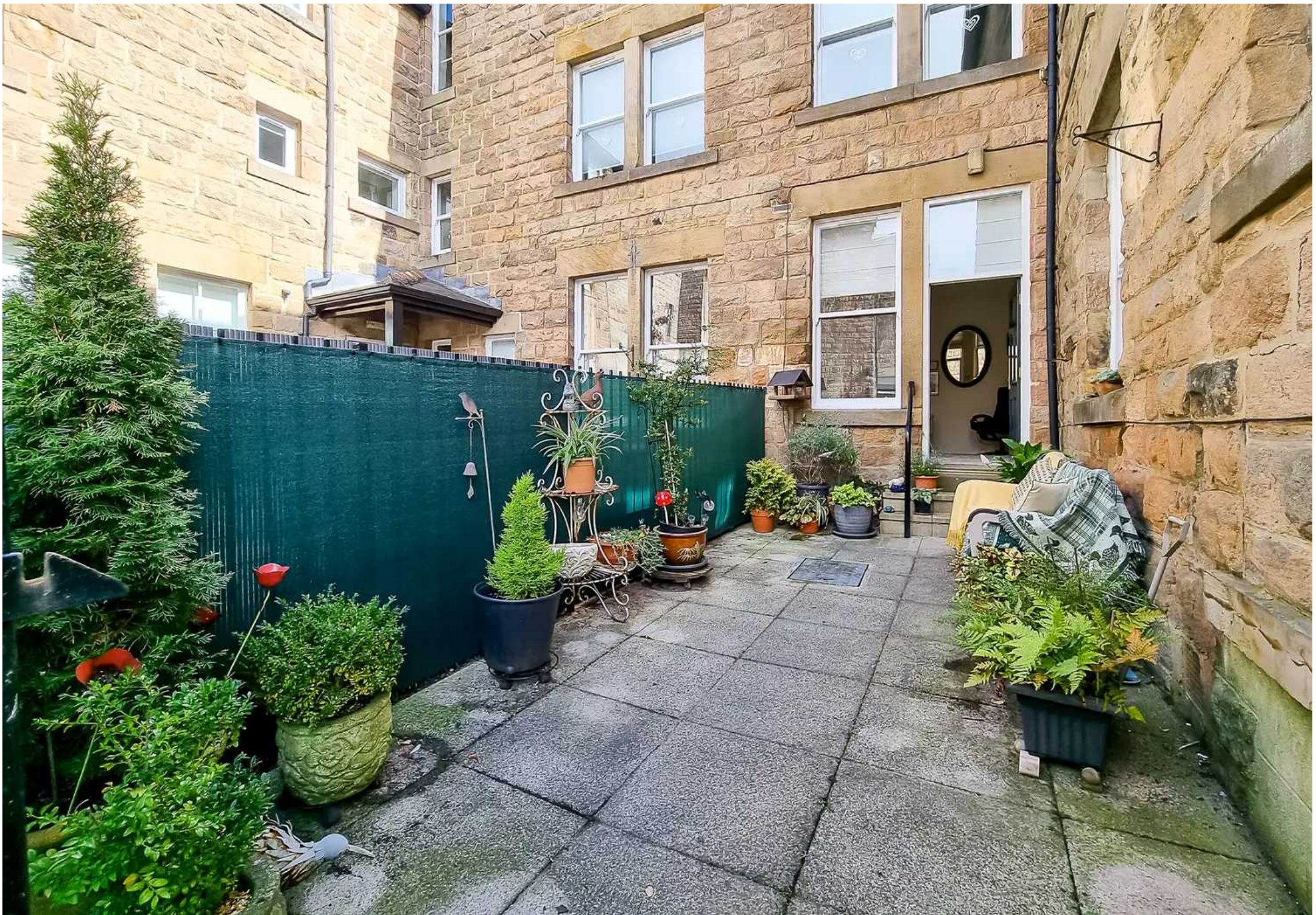




**Ground Floor**

Total Area: 87.8 m<sup>2</sup> ... 945 ft<sup>2</sup>

All measurements are approximate and for display purposes only.





## Myrings Estate Agents

Myrings Estate Agents Ltd, 10 Princes Square - HG1 1LX

01423  
566400

• [enquiries@myringsestateagents.com](mailto:enquiries@myringsestateagents.com) • <http://myringsestateagents.com/>

