

*tavistockbow*

**For Rent**



## People Make Places



**Henrietta Street, Covent Garden, WC2**

1 bedrooms | 581 sq ft

£875 pw





A stunning one bedroom furnished flat on the 4th floor of this period building on Henrietta Street. Refurbished to an exceptional standard the apartment offers light and airy accommodation in a period building just off Covent Garden piazza.

#### What you need to know

- One bedroom
- One shower room
- Air cooling
- 4th floor
- Off-site concierge service available
- Available furnished
- Exceptional quality
- Superb location
- Available early February
- Close to Leicester Square & Covent Garden station



**Henrietta Street, Covent Garden, WC2**





### Overview

Set in the eaves, the flat is on the 4th floor and has an open plan kitchen reception room, large double bedroom with excellent built in storage and a modern shower room with Hans Grohe fittings. Henrietta Street is one of the most desirable addresses in Covent Garden with Flat Iron and the Parisian restaurant, Frenchie on the street. The apartment has been beautifully furnished and is available early February, 3 year contract, straight or with a minimum 6 / 12 months mutual break clause, as negotiated. Westminster Council tax band E.

Residential occupiers on the Estate benefit from complimentary membership of Covent Garden Lifestyle Services, helping take the stress out of everyday life. The dedicated Covent Garden Lifestyle team are on hand to assist you with a vast array of both personal and work related services. Whether it be access to tickets for sold out events, restaurant bookings, event planning or services for your home. In addition, residents receive a digital lifestyle newsletter featuring all the latest news and updates on the Estate and further afield.



**Henrietta Street, Covent Garden, WC2**

# People Make Places

London is collection of inspiring urban villages and one of the most exciting places in the world to live, work & play.

We work with both property owners and their occupiers, sharing the story of these vibrant neighbourhoods, conveying the unique soul & energy to future custodians, the people who'll keep them buzzing.

And unlike many real estate businesses we're not just about buildings, because streets & buildings don't make a neighbourhood.

We're about building relationships, because **people make places**.

MISINTERPRETATION ACT [COPYRIGHT] DISCLAIMER: Tavistock Bow Ltd for themselves and for the vendor(s) of this property whose agents they are, given notice that: 1. These particulars do not constitute, nor constitute any part of, an offer or contract. 2. None of the statements contained in these particulars as to the property are to be relied on as statements or representations of fact. 3. Any intending purchaser or lessee must satisfy themselves by inspection or otherwise as to the correctness of each of the statements contained in these particulars. 4. The vendor(s) or lessor(s) do not make or give and neither Tavistock Bow Ltd nor any person in their employment has any authority to make or give any representation or warranty whatever in relation to this property. Finance Act 1989, Unless otherwise stated all prices and rents are quote exclusive of VAT. Property Misrepresentation Act 1991; These details are believed to be correct at the time of compilation but may be subject to subsequent amendment.

Follow us:     @tavistockbow

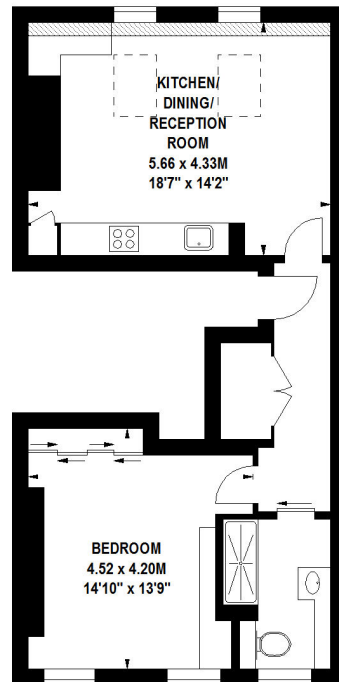
Score	Energy rating	Current	Potential
92+	A		
81-91	B		
69-80	C	70 C	70 C
55-68	D		
39-54	E		
21-38	F		
1-20	G		

## Henrietta Street, WC2

Approximate gross internal area

54 sq m / 581 sq ft

Under 1.5m head height



Fourth Floor

Floor Plan produced for Tavistock Bow by Mays Floorplans © . Tel 020 3397 4594  
Illustration for identification purposes only, not to scale  
All measurements are maximum, and include wardrobes and window bays where applicable

**tavistockbow**

21 New Row, Covent Garden,  
London, WC2N 4LE

t: 020 7477 2177  
e: hello@tavistockbow.com  
w: tavistockbow.com



**Henrietta Street, Covent Garden, WC2**