

# Gretton Close

Drakelow, Burton-on-Trent, DE15 9NQ



A modern detached family home on a sought-after and established development. Built by David Wilson and boasting a separate lounge and family friendly open-plan kitchen diner to the rear.

£300,000

John German 

A modern detached family home in a desirable location. Built by David Wilson this well appointed property is well suited to family living, boasting four well proportioned bedrooms with bedroom one having its own en suite.

With tarmac driveway to the side and access to the garage, the property has a front entrance door leading into the hallway, where stairs lead off to the first floor and doors open to the cloakroom, lounge and kitchen/diner. The cloakroom is smartly presented, with low level wc, hand wash basin with tiled splashback, central heating radiator and double-glazed window. Opposite, the main lounge is a great reception space, having two ceiling mounted light points, with double-glazed window looking out to the front aspect.

Continuing through, there is a useful understairs storage cupboard, with access then opening through to the impressive kitchen/diner. Comprising a range of gloss eye and base level units, work surface over and integrated appliances including fridge/freezer, oven, gas hob and overhead extractor with splashback. There is also a dishwasher, and a stainless-steel sink and drainer unit.

A double-glazed window looks out to the rear, with adjacent double patio doors offering access out.

To the other side of the room, there is an extremely useful utility cupboard, with appliance space and plumbing for a washing machine, in addition to providing storage space.

To the first floor, the landing has doors to the four bedrooms, and family bathroom.

All of the bedrooms are well proportioned and feature double-glazed windows, with two to the front aspect and two to the rear. Bedroom one is a good-sized double, benefiting from use of its own en suite shower room, having an enclosed shower cubicle, low level wc, hand wash basin and ladder heated towel rail.

The other three bedrooms are serviced by the family bathroom, which also has a smart suite, with panelled bath, low level wc, pedestal hand wash basin and heated towel rail. There are tiled splashbacks and an obscured double-glazed window.

Outside, the rear garden is laid predominantly to lawn, with a patio laid to the immediate rear of the property, and gated access leading to the driveway.

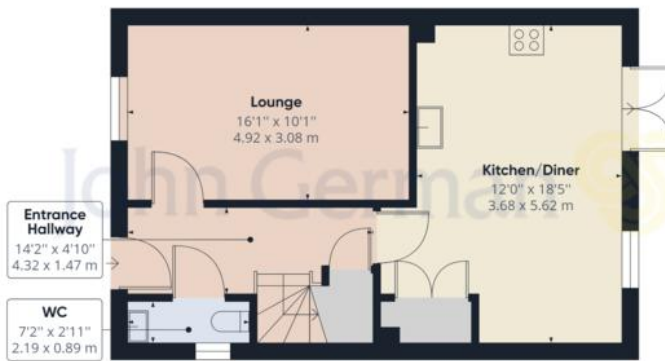
**Tenure:** Freehold (purchasers are advised to satisfy themselves as to the tenure via their legal representative).

**Services:** Mains water, drainage, electricity and gas are believed to be connected to the property but purchasers are advised to satisfy themselves as to their suitability.

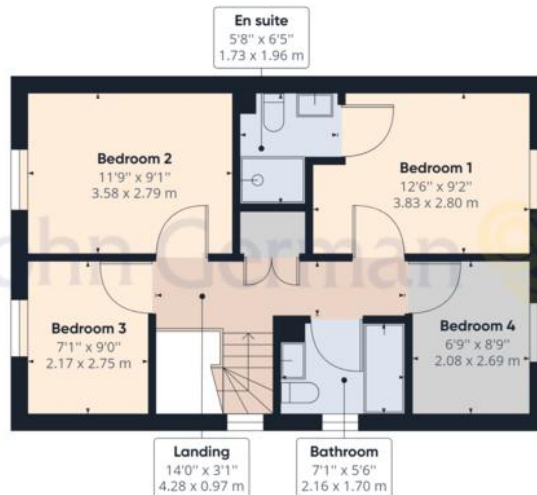
**Useful Websites:** [www.southderbyshire.gov.uk](http://www.southderbyshire.gov.uk)

**Our Ref:** JGA/16092022

**Local Authority/Tax Band:** South Derbyshire District Council / Tax Band D



Ground Floor Building 1



Floor 1 Building 1

John German

**Approximate total area<sup>(1)</sup>**  
1005.16 ft<sup>2</sup>  
93.38 m<sup>2</sup>

(1) Excluding balconies and terraces

While every attempt has been made to ensure accuracy, all measurements are approximate, not to scale. This floor plan is for illustrative purposes only.

GIRAFFE360





OnTheMarket



Score	Energy rating	Current	Potential
92+	A		A
81-91	B	B	A
69-80	C		
55-68	D		
39-54	E		
21-38	F		
1-20	G		

rightmove

RICS

naea  
propertymark  
PROTECTED

www.  
the  
londonoffice.co.uk

The Property  
Ombudsman

APPROVED CODE  
TRADING STANDARDS UK

John German  
129 New Street, Burton-On-Trent, Staffordshire, DE14  
3QW

01283 512244  
burton@johngerman.co.uk

#### Agents' Notes

These particulars do not constitute an offer or a contract neither do they form part of an offer or contract. The vendor does not make or give and Messrs. John German nor any person employed has any authority to make or give any representation or warranty, written or oral, in relation to this property. Whilst we endeavour to make our sales details accurate and reliable, if there is any point which is of particular importance to you, please contact the office and we will be pleased to check the information for you, particularly if contemplating travelling some distance to view the property. None of the services or appliances to the property have been tested and any prospective purchasers should satisfy themselves as to their adequacy prior to committing themselves to purchase.

#### Referral Fees

**Mortgage Services** - We routinely refer all clients to APR Money Limited. It is your decision whether you choose to deal with APR Money Limited. In making that decision, you should know that we receive on average £60 per referral from APR Money Limited.

**Conveyancing Services** - If we refer clients to recommended conveyancers, it is your decision whether you choose to deal with this conveyancer. In making that decision, you should know that we receive on average £150 per referral.

**Survey Services** - If we refer clients to recommended surveyors, it is your decision whether you choose to deal with this surveyor. In making that decision, you should know that we receive up to £90 per referral.

Ashbourne | Ashby de la Zouch | Barton under Needwood  
Burton upon Trent | Derby | East Leake | Lichfield  
Loughborough | Stafford | Uttoxeter | The London Office

JohnGerman.co.uk Sales and Lettings Agent