



GFF 28 Ladysmith Road | Lipsn | Plymouth | PL4 7NL

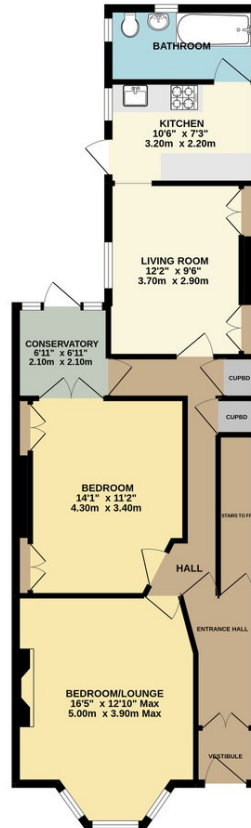
Guide £90,000 - £100,000

A spacious ground floor flat situated within the popular area of Lipsn. This period property has been converted into two flats, and retains much of the original charm. Upon inspection you will find, an entrance vestibule, entrance hall, private hall, lounge, dining room, kitchen, bedroom and bathroom. There is also a small conservatory to the rear. The property is located within easy reach of local facilities, with Mutley Plain and City Centre being within walking distance. The flat will appeal to Cash Investment Buyers with a potential income of £8,700 pa which equates to 9.7%.

- Ground Floor Flat
- One / Two Bedrooms
- Living Room
- Kitchen With Belfast Sink
- Modern Bathroom Suite
- Proven Rental Income
- Gas Central Heating
- Period Features



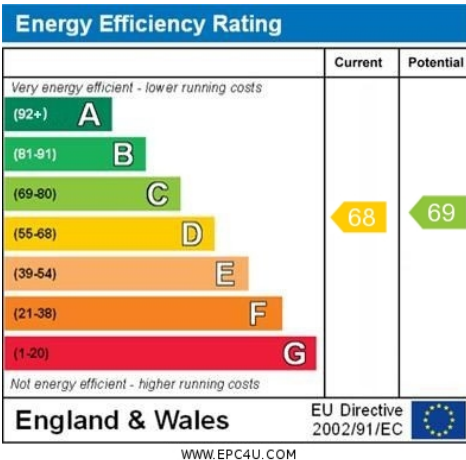
GROUND FLOOR
814 sq.ft. (75.6 sq.m.) approx.



Contact Details

48 Ebrington Street
Plymouth
Devon
PL4 9AD

www.athomelettings.com
info@athomeproperty.co.uk
01752 777070



Agents Note: Whilst every care has been taken to prepare these sales particulars, they are for guidance purposes only. All measurements are approximate are for general guidance purposes only and whilst every care has been taken to ensure their accuracy, they should not be relied upon and potential buyers are advised to recheck the measurements