

NOVUS Residential

SALES
LETTINGS
MANAGEMENT

THE CHAPEL, VICARS MOOR LANE, WINCHMORE HILL, N21



A unique opportunity to acquire what is perhaps Winchmore Hill's most iconic property. The Chapel, built in 1883 (a former Providence Strict Baptist chapel), is a detached luxury residence located within the Vicars Moor Lane Conservation Area complete with an array of original features. The accommodation, which spans across four floors (with mezzanine and half landings), extends to approximately 1,750 sq ft and comprises gothic style double front doors opening to a vaulted reception area and a separate study/bedroom. Stairs lead down to a large contemporary kitchen/diner which is fully aplianced and has a central island and shelving and storage solutions, bi-fold doors from the kitchen lead to a secluded timber decked terrace/town garden with a southerly orientation. There is also a bedroom suite with integrated in-built storage and a fully tiled shower suite at this level. The principal bedroom (22 ft wide) is situated on the first floor has dual aspect windows and a range of built-in wardrobes, there is a further bedroom and a four piece bathroom suite (with free standing bath) on this floor. Stairs rise to a mezzanine with balustrade overlooking the entrance and this makes for a perfect home office. This in turn leads to a minstrels gallery with doors opening to a stunning split-level reception room to the rear which has at its centre an original circular chapel window with far reaching views across local rooftops with greenbelt woodland a little further.

£1,150,000 (STC)

CHAIN FREE

FREEHOLD

0208 350 8936

move@novusresidential.co.uk

zoopla

rightmove 
find your happy

PRS Property
Redress
Scheme

The property has multiple period and contemporary features that include stain glass double height chapel windows, exposed wrought iron tie bars, exposed brickwork, wood panelled vaulted ceilings and quality wood flooring to principal rooms. Externally the property is entered via wrought iron gates and has an attractive herb garden with raised beds contained within railway sleepers and to either side there is both the town garden and a garden store.

The property is situated at the top end of Vicars Moor Lane, close to its junction with Wades Hill. The location is ideal for easy access to the many shops and amenities of Winchmore Hill Green that include numerous coffee shops, delicatessens, restaurants and gastro pubs. Winchmore Hill Railway Station (Overground) is within comfortable walking distance and this provides regular commuter access to London's Moorgate and Kings Cross Stations. Grovelands Park with its green open spaces, woods, tennis courts and pitch and putt course is nearby as are several schools of very good renown to include St Paul's C of E Primary and Keble Preparatory School.



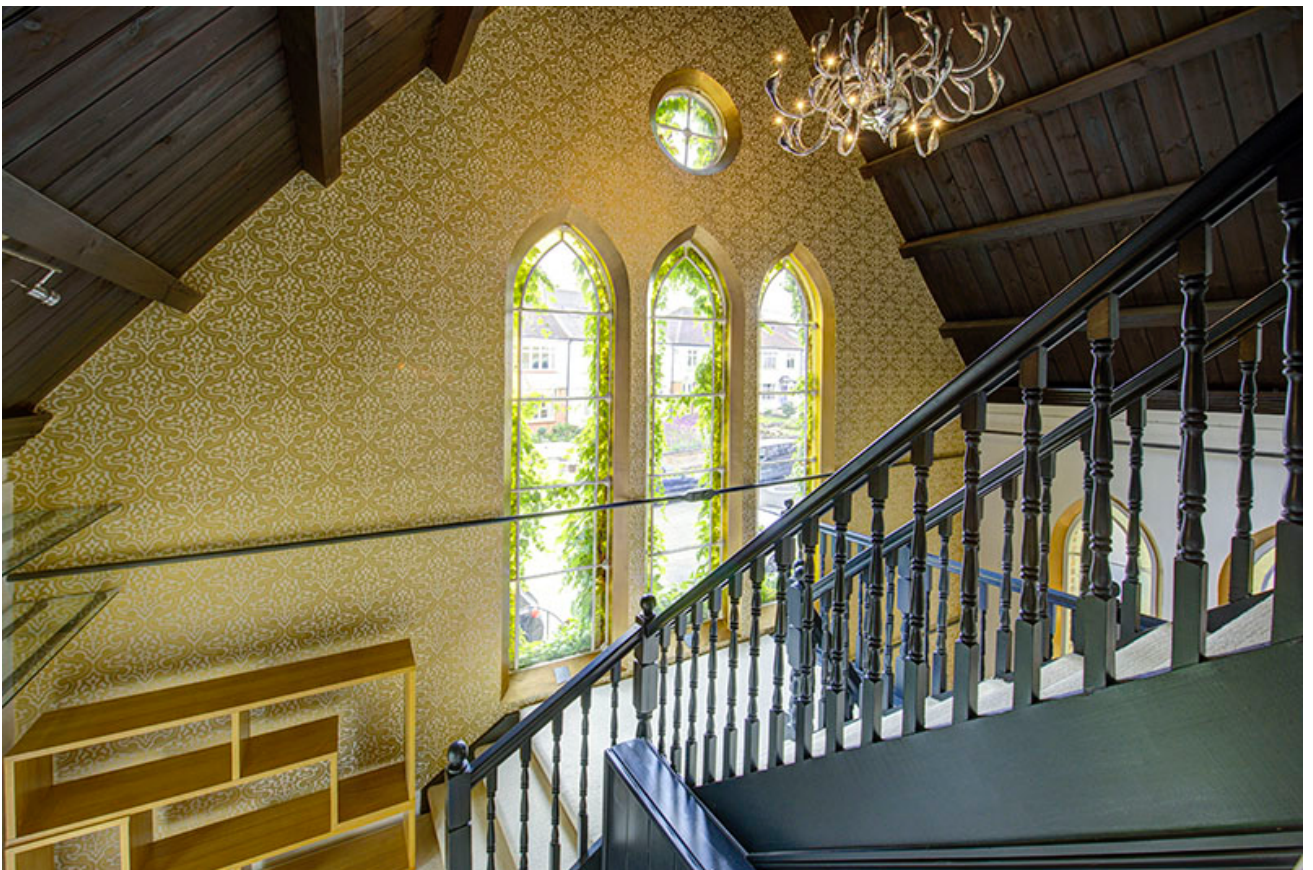
Council Tax – E £2,660 (ENFIELD)















- These particulars are offered on the understanding that all negotiations are conducted through this company.
- These details and photographs have been prepared for “Novus Residential” in good faith and as a general guide, not a statement of fact.
- Neither these particulars, nor oral representations, form part of any offer or contract and their accuracy cannot be guaranteed.
- Any floor plan provided is for representation purposes only, measurements are approximate and should not be relied upon, whilst every attempt has been made to ensure their accuracy the measurements of windows, doors and rooms are approximate and should be used as such by prospective purchasers.
- We have not tested any services, systems and appliances mentioned and we cannot verify that they are in working order.
- Should you have a query or complaint about our service, please contact us at move@novusresidential.co.uk .

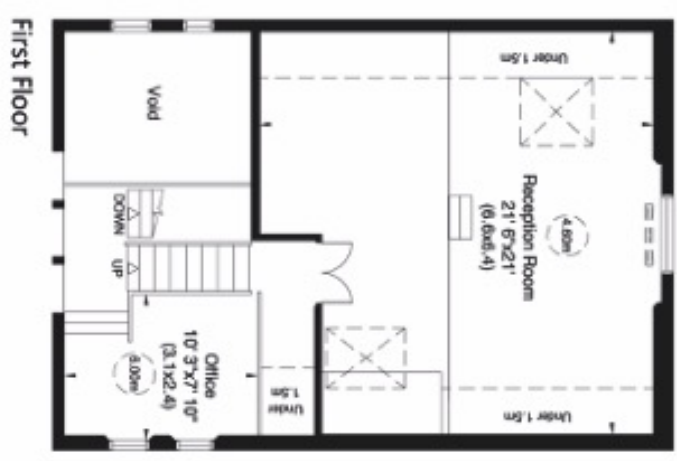
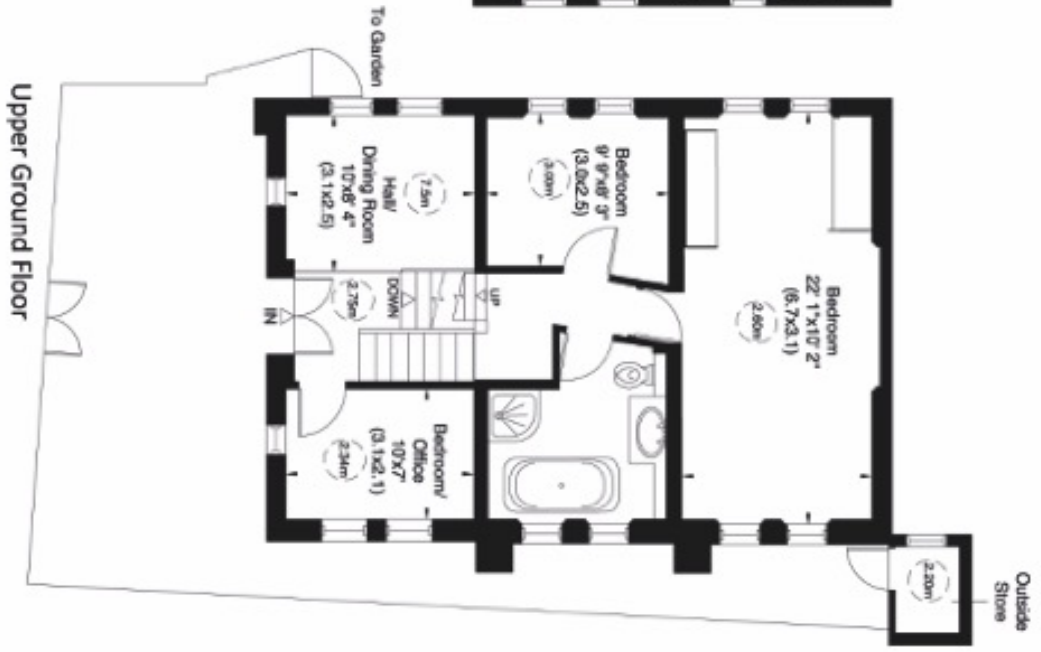
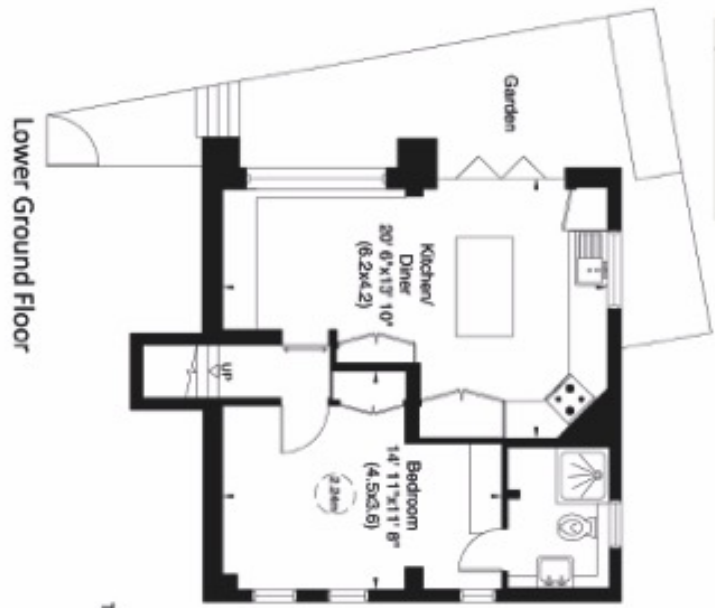
Vicars Moor Lane, N21

Gross internal area (approx.)

162 Sq m (1747 Sq ft) Including Under 1.5m and Outside Store
 152 Sq m (1641 Sq ft) Excluding Under 1.5m and Outside Store

For Identification only, Not to Scale

capital, 020 8871 7722



Not to scale, for guidance only and must not be relied upon as a statement of fact. All measurements and areas are approximate only (and have been prepared in accordance with the current edition of the RICS Code of Measuring Practice).