



Please note, the furniture in this image has been virtually s

## Flat 2, Romford Road

London, E12 5AW

£1,800 pcm

Fees Apply

- Finished to a high standard
- Optional furnishings
- Wood laminate flooring throughout
- Brand-new kitchen
- Brand-new shower room
- Private terrace

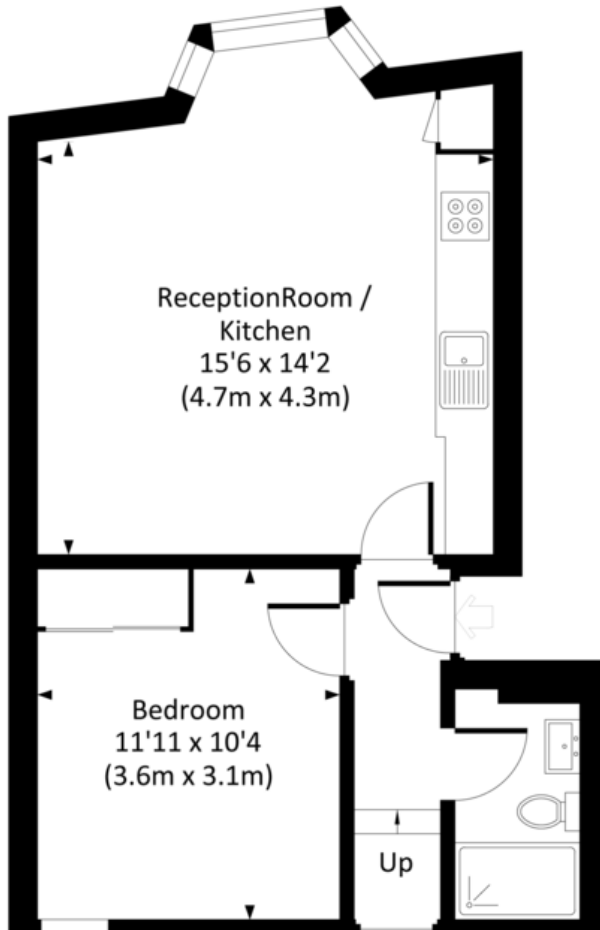


## Property Description



# ROMFORD ROAD, E12

Approx. gross internal area  
594 Sq Ft. / 55.2 Sq M.



Find us on   

[mydeposits.co.uk](http://mydeposits.co.uk)



[rightmove](https://www.rightmove.co.uk)  
find your happy

[Zoopla.co.uk](https://www.zoopla.co.uk)

 PrimeLocation



## Registered Office

Suite C, 36-40 Copperfield Road,  
London, E3 4RR /08050057

[www.netlettings.com](http://www.netlettings.com)  
[management@netlettings.com](mailto:management@netlettings.com)  
020 8981 5551

Agents Note: Whilst every care has been taken to prepare these particulars, they are for guidance purposes only. All measurements are approximate are for general guidance purposes only and whilst every care has been taken to ensure their accuracy, they should not be relied upon and potential tenants are advised to recheck the measurements.