

SUTHERLAND HOUSE

70-78 WEST HENDON BROADWAY, HENDON, NW9 7BT

FOREST
REAL ESTATE

TO LET

664 TO 1,415 SQ FT

Recently refurbished open plan office with 5 allocated parking spaces.

Key Features

- Open plan
- Lift access
- Gas Heating
- Five allocated parking spaces
- Second floor with views of Wembley Stadium
- Recently refurbished
- Dual aspect natural light
- LED lighting
- Short walk to Hendon Thameslink Station
- 24/7 access

**2nd Floor, Sutherland House, 70-78 West Hendon Broadway
Hendon, NW9 7BT**





Description

The building entrance has recently been refurbished along with the second floor office which is now a modern open plan space. Natural light comes from dual aspect windows.

Other benefits include individually controlled gas heating, fresh air system, carpet throughout, perimeter trunking, secondary glazing, shared WC's and kitchen.

Location

Sutherland House is situated on the southbound carriageway of the A5 Edgware Road on West Hendon Broadway. Sutherland House is located close to road networks that include the M1, A41, A1 & North Circular Road (A406) which leads to the M40, M4 and M25

Hendon Thameslink station is located approximately 0.45 miles away whilst Brent Cross Shopping Centre is less than 1 mile away.

The 32 and 142 buses stop directly outside the building.

VAT

Plus VAT.





Availability

The accommodation comprises of the following

Name	sq ft	sq m	Availability
2nd - Left	1,415	131.46	Available
2nd - Centre	664	61.69	Available
Total	2,079	193.15	
Lease	New Lease		
Rent	£10,000 - £21,499 per annum		
Rates	To be confirmed.		
Service Charge	To be confirmed.		
VAT	Applicable		
EPC	E (106)		

Contact

Cormac Sears

020 3355 1555 | 07850 399 627
cormac@forestrealestate.co.uk

Ethan Shine

020 3355 1555 | 07792 781 096
ethan@forestrealestate.co.uk

North London Office

1 Bridge Lane, London, NW11 0EA
020 3355 1555

Watford Office

1a Local Board Road, Watford, WD17 2JP
01923 911 007

18a Victoria Park Square, London, E2 9PB
020 3370 4470

www.forestrealestate.co.uk
info@forestrealestate.co.uk

2nd Floor, Sutherland House, 70-78 West Hendon Broadway
Hendon, NW9 7BT

F O R E S T
REAL ESTATE

The above information contained within this brochure is subject to contract. These particulars are for general information only and do not constitute any part of an offer or contract. All statements contained therein are made without responsibility on the part of the vendors or lessors and are not to be relied upon as statement or representation of fact. Intending purchasers or lessees must satisfy themselves, by inspection, or otherwise, as to the correctness of each of the statements of dimensions contained in these particulars. Generated on 28/05/2024

Availability

The accommodation comprises of the following

Name	sq ft	sq m	Availability
2nd - Left	1,415	131.46	Available
2nd - Centre	664	61.69	Available
Total	2,079	193.15	
Lease	New Lease		
Rent	£10,000 - £21,499 per annum		
Rates	To be confirmed.		
Service Charge	To be confirmed.		
VAT	Applicable		
EPC	E (106)		

Contact

Cormac Sears

020 3355 1555 | 07850 399 627
cormac@forestrealestate.co.uk

Ethan Shine

020 3355 1555 | 07792 781 096
ethan@forestrealestate.co.uk

North London Office

1 Bridge Lane, London, NW11 0EA
020 3355 1555

Watford Office

1a Local Board Road, Watford, WD17 2JP
01923 911 007

18a Victoria Park Square, London, E2 9PB
020 3370 4470

www.forestrealestate.co.uk
info@forestrealestate.co.uk

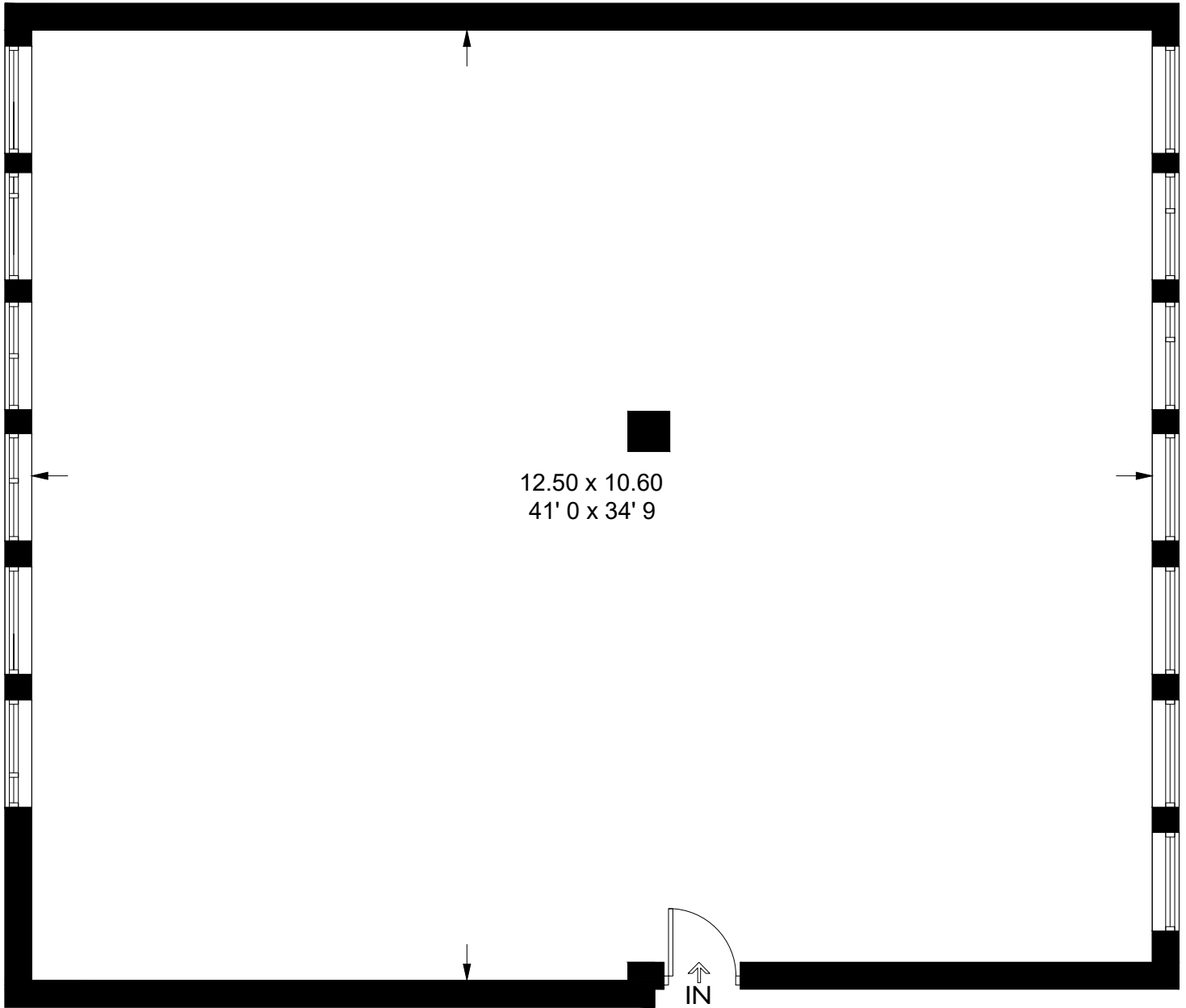
2nd Floor, Sutherland House, 70-78 West Hendon Broadway
Hendon, NW9 7BT

F O R E S T
REAL ESTATE

The above information contained within this brochure is subject to contract. These particulars are for general information only and do not constitute any part of an offer or contract. All statements contained therein are made without responsibility on the part of the vendors or lessors and are not to be relied upon as statement or representation of fact. Intending purchasers or lessees must satisfy themselves, by inspection, or otherwise, as to the correctness of each of the statements of dimensions contained in these particulars. Generated on 28/05/2024

Sutherland House

Approximate Gross Internal Area = 1415 sq ft / 131.5 sq m



Second Floor

This plan is not to scale and must be used as layout guidance only. All measurements and areas are approximate and should not be relied upon to provide accurate information. This plan must not be relied upon when making property valuations, design considerations or any other such relevant decisions. We accept no responsibility or liability (whether in contract, tort or otherwise) in relation to any loss whatsoever arising from or in connection with any use of this plan or the adequacy, accuracy or completeness of it or any information within it.