

ON HOLD



Walstow Crescent, Armthorpe
Offers In Excess Of £160,000


MARTIN & CO



Walstow Crescent, Armthorpe

3 Bedrooms, 3 Bathroom

Offers In Excess Of £160,000

- Deceptively spacious Family Home
- Very Popular Location
- Close to excellent commuter routes
- Close to schools
- Close to good local amenities

A rare opportunity to purchase a stunning family home in the sought-after location of Armthorpe. Briefly comprising of a generous living room, kitchen diner and WC on the ground floor. Located on the first floor is a master suite with ensuite shower room, a second double bedroom, a single bedroom and a family bathroom.

Outside to the rear of the property the garden has been afforded the same level of attention and now provided a fantastic low maintenance outdoor space. To the front of the property there is parking for 3 cars. Early viewing is recommended to avoid disappointment

LOUNGE 13' 10" x 11' 9" (4.22m x 3.60m) An attractive living room with a front facing window and feature fireplace

KITCHEN/DINER 8' 8" x 14' 11" (2.65m x 4.57m) With a range of white high gloss wall and base units complemented with black worktops. The addition of a black oven and hob enhance the modern appearance. There is plumbing for a washing machine and dishwasher, space for a fridge freezer and plenty of room for a family dining table

WC 5' 0" x 3' 2" (1.54m x 0.97m) A ground floor WC



BEDROOM 1 11' 0" x 10' 4" (3.36m x 3.15m) An attractive master bedroom with ensuite shower room

BEDROOM 2 12' 0" x 6' 0" (3.67m x 1.83m) A second double bedroom

BEDROOM 3 6' 7" x 6' 1" (2.02m x 1.87m) A single bedroom currently being used as a dressing room

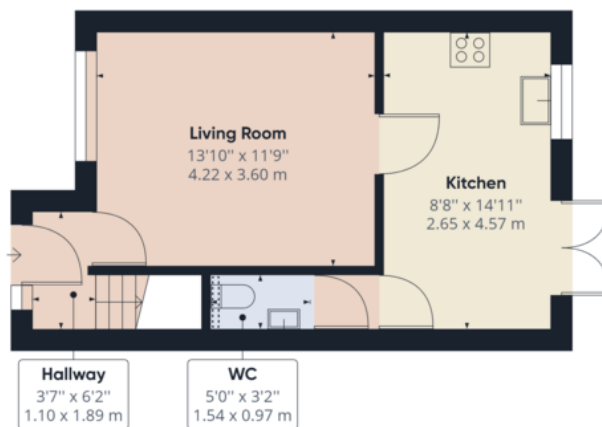
BATHROOM 7' 7" x 4' 9" (2.32m x 1.45m) A family bathroom with a white bathroom suite



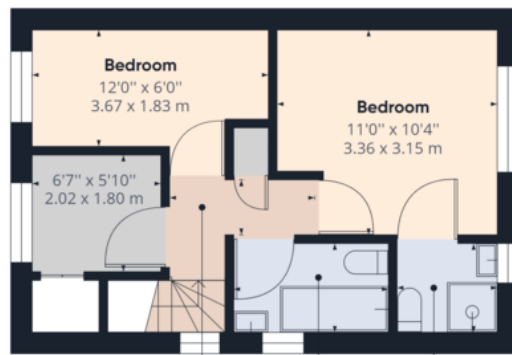


%epcGraph_c_1_544%





Ground Floor Building 1



Approximate total area⁽¹⁾
 681.74 ft²
 63.34 m²

Reduced headroom
 1.17 ft²
 0.11 m²

(1) Excluding balconies and terraces

Reduced headroom
 (below 1.5m/4.92ft)

While every attempt has been made to

Martin & Co Doncaster

38 Hall Gate • Doncaster • DN1 3NR
 T: 01302 343 494 • E: doncaster@martinco.com

01302 343 494

<http://www.martinco.com>



Accuracy: References to the Tenure of a Property are based on information supplied by the Seller. The Agent has not had sight of the title documents. A Buyer is advised to obtain verification from their Solicitor. Items shown in photographs including but not limited to carpets, fixtures and fittings are not included unless specifically mentioned within the sales particulars. They may however be available by separate negotiation. Buyers must check the availability of any property and make an appointment to view before embarking on any journey to see a property. No person in the employment of the agent has any authority to make any representation about the property, and accordingly any information given is entirely without responsibility on the part of the agents, sellers(s) or lessors(s). Any property particulars are not an offer or contract, nor form part of one. **Sonic / Laser Tape:** Measurements taken using a sonic / laser tape measure may be subject to a small margin of error. **All Measurements:** All Measurements are Approximate. **Services Not tested:** The Agent has not tested any apparatus, equipment, fixtures and fittings or services and so cannot verify that they are in working order or fit for the purpose. A Buyer is advised to obtain verification from their Solicitor or Surveyor.