



Weston Lane, Totnes, TQ9 5UN

Guide Price: £550,000

Tenure: Freehold



Weston Lane, Totnes, TQ9 5UN

A Beautiful And Impressive Family Home, Situated In A Highly Sought After Residential Area

- A Stunning 3 Bedroom Family Home In A Sought After Residential Road
- Driveway Parking
- Garage
- Enclosed Gardens With A Decked Patio Area
- Open Plan Kitchen And Dining Area
- Modern Family Bathroom
- 3 Well Proportioned Bedrooms
- Downstairs WC And Utility Room
- Master En-Suite
- EPC-TBA



3 Bedrooms, Master en-suite, Family Bathroom, Downstairs WC/Utility, Open Plan Kitchen/Diner, Spacious Lounge, Large Porch, Driveway, Garage, Enclosed Gardens and Decked Patio Area, Stunning Views

An excellent opportunity to purchase this beautiful family home, situated in a highly sought after residential area of Totnes.

This property offers very well maintained gardens, a decked patio area with a built in bbq, a garage and a driveway.

Internally there are 3 well proportioned bedrooms with master en-suite and a family bathroom.

There is a spacious Lounge, an open plan Kitchen/Diner, a WC/Utility and a large porch on the ground floor.

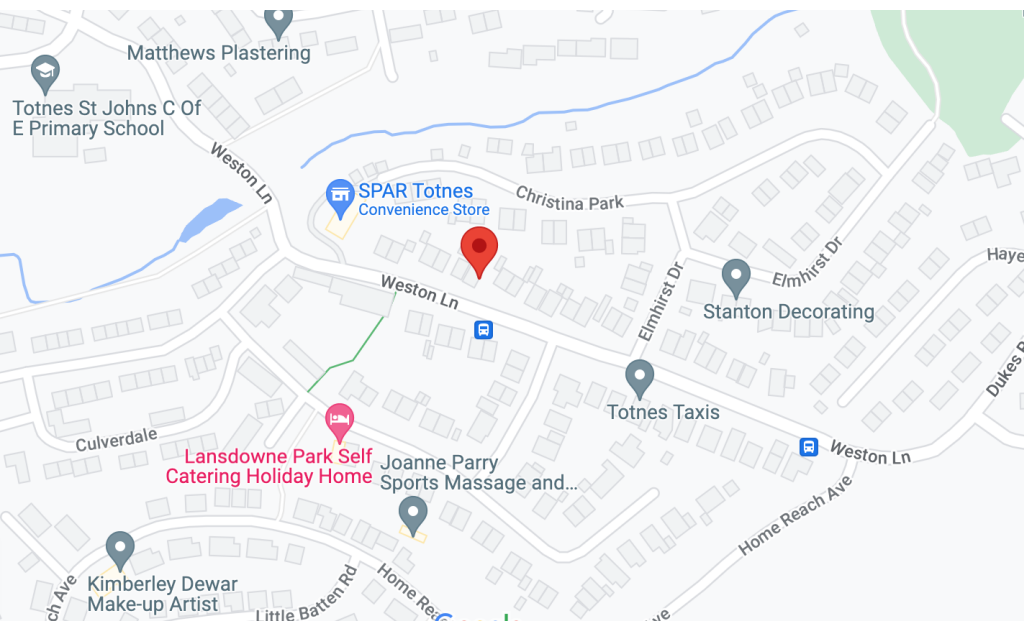
This property is very well presented and is a true credit to its current owners.

An internal viewing is an absolute must to fully appreciate the accommodation on offer.



The unique and charming market town of Totnes sits above the River Dart in the heart of the South Hams.

Full of colour and character, its atmosphere is cosmopolitan with a West Country flavour and those looking for history, alternative therapies and beautiful countryside will find it in and around Totnes. The town is said to have more listed buildings per head of the population than anywhere else in Britain. It is the second oldest borough in England, with an ancient Guildhall and Church, a Norman Castle and its North and East Gates. There is a well-regarded community college and a mainline railway station and Dartmoor, the South Hams and many of its fine beaches are within easy reach.



What3Words

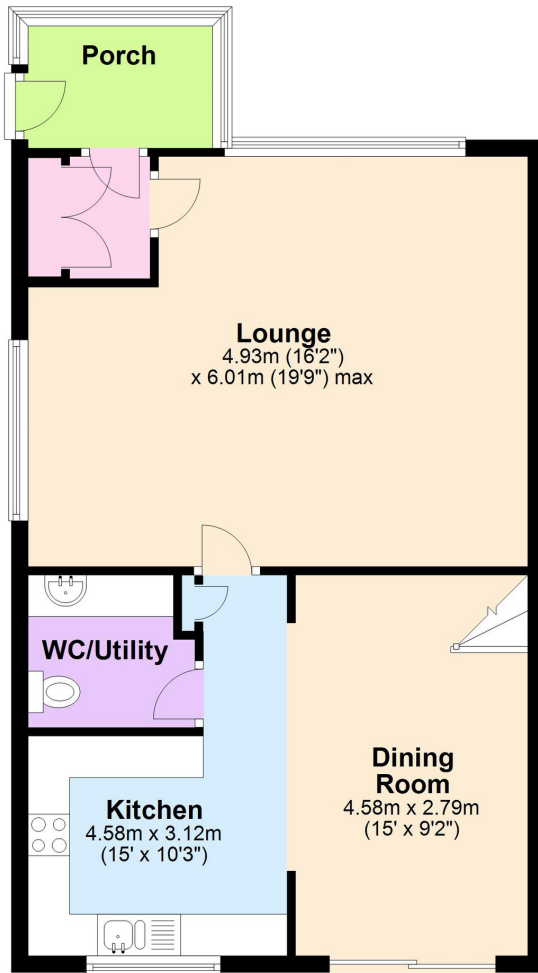
UPRN:

<https://w3w.co/purified.writers.cocktail>

Agents Notes:

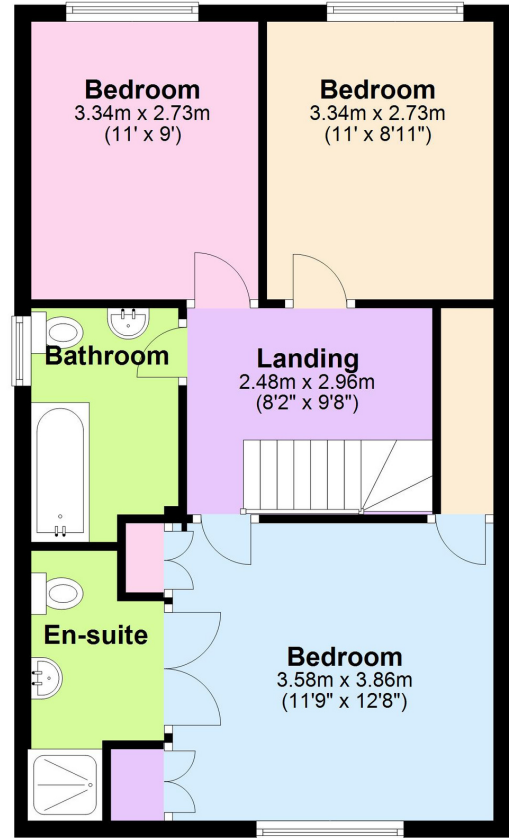
Ground Floor

Approx. 61.2 sq. metres (659.1 sq. feet)



First Floor

Approx. 53.5 sq. metres (575.4 sq. feet)



Total area: approx. 114.7 sq. metres (1234.6 sq. feet)

Have a property to sell or let?

If you are considering selling or letting your home, get in contact with us today on 01803 214214 to speak with one of our expert team who will be able to provide you with a free valuation of your home.



We refer potential purchasers to Sheehan Legal for conveyancing, Greenlight Mortgages for mortgages, McCluskey Surveyors for surveying & Team Removals for removals. It is your decision if you choose to deal with any of these companies however should you choose to use them we would receive a referral fee from them for recommending you to them as follows: Sheehan Legal £150, Greenlight Mortgages £50 to £300, McCluskey Surveyors £50, Team Removals £50. We have carefully selected these associates for the quality of their work and customer service levels.

Consumer Protection Regulations: We have not tested any apparatus, equipment, fixtures and fittings or services and so cannot verify that they are in working order or fit for the purpose. References to the Tenure of a Property are based on information supplied by the seller. We have not had sight of the Title Documents. A buyer is advised to obtain verification from their solicitor or surveyor. Floorplans shown are for guidance only and should not be relied upon. Items shown in photographs are NOT included unless specifically mentioned within these details. They may however be able by separate negotiation. You are advised to check the availability of this property before travelling any distance to view. Particulars are produced in good faith to the best of our knowledge and are set out as a general guide only.

