



AN EXCLUSIVE DEVELOPMENT OF 4 LUXURY SEMI-DETACHED HOUSES

Homefield Road, Chorleywood, Hertfordshire WD3 5QJ

ROBSONS
LAND & NEW HOMES

Homefield Mews, Homefield Road

Chorleywood, Hertfordshire

• GUEST CLOAKROOM • LIVING/DINING ROOM • BESPOKE KITCHEN WITH BOSCH INTEGRATED APPLIANCES • MASTER BEDROOM WITH FITTED WARDROBES & ENSUITE BATHROOM • GUEST BEDROOM WITH FITTED WARDROBES & SHOWER ROOM • BEDROOM 3/STUDY TO 2ND FLOOR • GUEST SHOWER ROOM • SOLAR PANELS CONNECTED TO GRID • UNDERFLOOR HEATING TO GROUND AND FIRST FLOOR WITH INDIVIDUAL ROOM CONTROLS • LANDSCAPED GARDEN • WIRED FOR ALARM SYSTEM • INTEGRAL GARAGE WITH REMOTE & APP CONTROLLED DOORS • PARKING FOR APPROXIMATELY 2 CARS • LABC 10 YEAR BUILD WARRANTY •

Description

Exclusive new development of 4 luxury family homes featuring classic, timeless exteriors and elegant, flexible internal space.

Each three bedroom home provides the definitive answer to modern living with country charm. The architecture is in keeping with the local character, while the interiors reveal sleek, contemporary comfort and beautifully designed, practical and flexible living space. Throughout the design and build of these homes, quality and energy-efficiency have been the guiding principles. They are equipped with low-energy appliances, high performance materials together with media and communications that allow you to work from home and to effortlessly entertain your friends and guests.

These charming new homes, offering privacy and peaceful seclusion, yet is close to a wide range of local amenities within the Village. Homefield Mews provides the perfect backdrop to raise families within one of Hertfordshire's most desired locations, offering village charm in the rural suburbs.

Location

Chorleywood Village's facilities include a wide choice of boutique shops, coffee houses and restaurants. Marks & Spencer and Waitrose food halls are available in Rickmansworth. The area is also well served for sought after state and private schools for all ages. Leisure facilities include golf courses, cricket, football clubs, horse riding and fitness centres, together with Chorleywood Common and Rickmansworth Aquadrome, providing acres of outdoor space for walks and further activities. The Metropolitan and Main lines at Chorleywood Station offer a frequent service into London and beyond. The M25 is easily accessible via Junctions 17 and 18.

Disclaimer

Floorplans shown are for approximate measurements only. Exact layout and sizes may vary. All measurements may vary within a tolerance of 5%. The information in this document is indicative and is intended to act as a guide only as to the finished product, which may vary from the information provided. These particulars should not be relied upon as accurately describing any of the specific matters under the Consumer Protection Regulations 2014. This information does not constitute a contract or warranty. The dimensions given on plans are subject to minor variations and are not intended to be used for carpet sizes, appliance sizes or items of furniture. The appliances and furniture in the kitchens and bathrooms are subject to design. Not all domestic appliances have an EU energy label. Appliances may vary in each dwelling type / choice subject to build stage. Please consult Sales Advisor for final layouts. The images are from a previous show home and are indicative only. Private road - road charges may apply.

Guide Price: £950,000

Tenure: Freehold

Energy Efficiency Rating: B

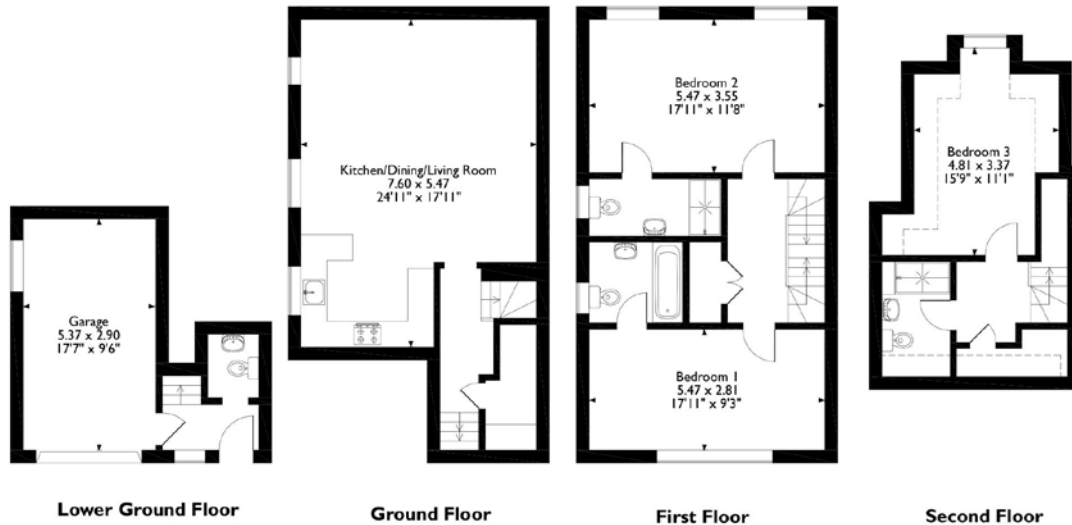
Local Authority: Three Rivers District Council





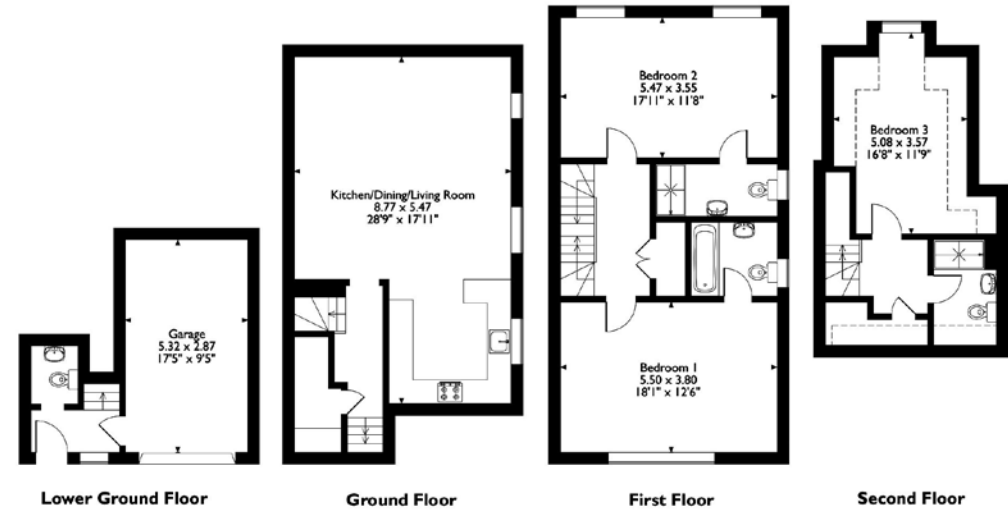
Homefield Road, Plot 1 Homefield Mews Chorleywood, Hertfordshire

Approximate Gross Internal Area
 Main House = 135 Sq M/1450 Sq Ft
 Garage = 17 Sq M/178 Sq Ft
 Total = 152 Sq M/1628 Sq Ft



Homefield Road, Plot 2 Homefield Mews Chorleywood, Hertfordshire

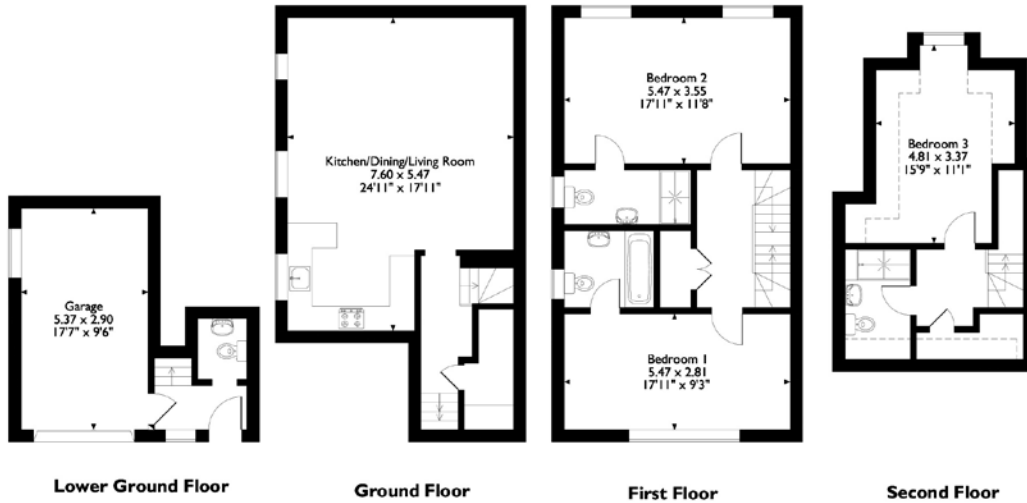
Approximate Gross Internal Area
 Main House = 146 Sq M/1570 Sq Ft
 Garage = 17 Sq M/178 Sq Ft
 Total = 163 Sq M/1748 Sq Ft



Please note that the location of doors, windows and other items are approximate and this floorplan is to be used for illustrative purposes only. Unauthorized reproduction is prohibited.

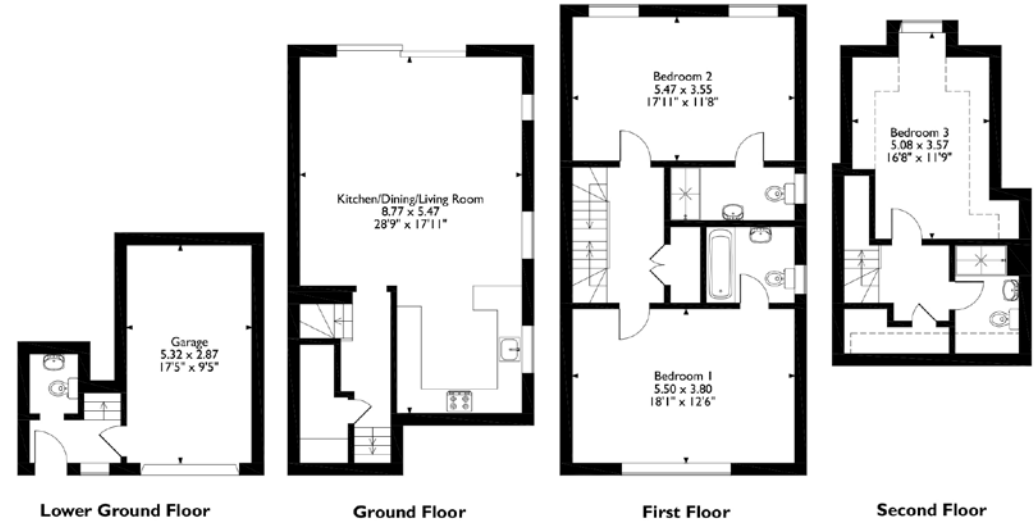
Please note that the location of doors, windows and other items are approximate and this floorplan is to be used for illustrative purposes only. Unauthorized reproduction is prohibited.

Plot 3 Homefield Mews
 Approximate Gross Internal Area
 Main House = 135 sq m/1450 sq ft
 Garage = 17 sq m/178 sq ft
 Total = 152 sq m/1628 sq ft



Please note that the location of doors, windows and other items are approximate and this floorplan is to be used for illustrative purposes only. Unauthorized reproduction is prohibited.

Plot 4 Homefield Mews
 Approximate Gross Internal Area
 Main House = 146 sq m/1570 sq ft
 Garage = 17 sq m/178 sq ft
 Total = 163 sq m/1748 sq ft



Please note that the location of doors, windows and other items are approximate and this floorplan is to be used for illustrative purposes only. Unauthorized reproduction is prohibited.

ROBSONS

LAND & NEW HOMES

First Floor 130 High Street, Rickmansworth, Hertfordshire WD3 1AB

Tel: 0203 814 1883 neil.ret@robsonswb.com

www.robsonswb.com

www.

the
 londonoffice.co.uk

40 ST JAMES'S PLACE SW1