



10 Mallard Court, Doncaster, DN11 0NZ
Offers In Region Of £280,000 Freehold


MARTIN&CO

Mallard Court, Rossington

4 Bedrooms, 2 Bathroom

Offers In Region Of £280,000

- Four Bedroom detached
- Garage and Driveway
- Quiet Cul-de-Sac Location
- Close to local amenities
- Close to excellent commuter links
- Close to schools
-

A four bedroom detached property available for sale in Rossington, with off road parking and single garage. Briefly comprising a spacious entrance, front facing lounge, kitchen/ diner and wc on the ground floor. A master bedroom with ensuite, three further bedrooms and family bathroom on the first floor. There is an enclosed family garden to the rear of the property. The property is situated in a quiet cul-de-sac close to local amenities and schools and

%epcGraph_c_1_363%



close to excellent commuter routes. Call now to arrange a viewing

LOUNGE 14' 10" x 14' 5" (4.53m x 4.41m) A spacious living room opening into the kitchen diner

KITCHEN/DINER 24' 11" x 8' 0" (7.62m x 2.45m) A light and airy kitchen diner with a range of wood effect wall and base units complimented with dark grey worktops. There is an integrated oven, hob and extractor and plumbing for a washing machine. There is plenty of room for a family dining table

WC 6' 4" x 3' 8" (1.94m x 1.14m) A ground floor WC

HALLWAY A generous entrance hall

BEDROOM 10' 11" x 10' 10" (3.33m x 3.31m) A master bedroom with ensuite shower room

ENSUITE 7' 10" x 3' 7" (2.39m x 1.11m) An ensuite shower room with a walk-in shower, WC and hand

basin

BEDROOM 10' 10" x 9' 7" (3.31m x 2.94m) A second double bedroom

BEDROOM 10' 1" x 6' 8" (3.09m x 2.04m) A third double bedroom

BEDROOM 10' 6" x 6' 4" (3.21m x 1.94m) A fourth double bedroom

BATHROOM 6' 8" x 5' 6" (2.04m x 1.70m) A family bathroom with a three piece white bathroom suite and over bath shower



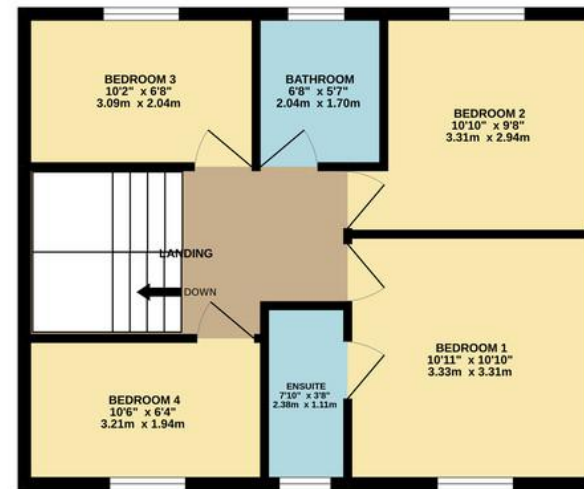




GROUND FLOOR
525 sq.ft. (48.8 sq.m.) approx.



1ST FLOOR
514 sq.ft. (47.8 sq.m.) approx.



TOTAL FLOOR AREA: 1040 sq.ft. (96.6 sq.m.) approx.

Whilst every attempt has been made to ensure the accuracy of the floorplan contained here, measurements of doors, windows, rooms and any other items are approximate and no responsibility is taken for any error, omission or mis-statement. This plan is for illustrative purposes only and should be used as such by any prospective purchaser. The services, systems and appliances shown have not been tested and no guarantee as to their operability or efficiency can be given.
Made with Metropix ©2022

Martin & Co Doncaster

38 Hall Gate • Doncaster • DN1 3NR
T: 01302 343 494 • E: doncaster@martinco.com

01302 343 494

<http://www.martinco.com>



Accuracy: References to the Tenure of a Property are based on information supplied by the Seller. The Agent has not had sight of the title documents. A Buyer is advised to obtain verification from their Solicitor. Items shown in photographs including but not limited to carpets, fixtures and fittings are not included unless specifically mentioned within the sales particulars. They may however be available by separate negotiation. Buyers must check the availability of any property and make an appointment to view before embarking on any journey to see a property. No person in the employment of the agent has any authority to make any representation about the property, and accordingly any information given is entirely without responsibility on the part of the agents, sellers(s) or lessors(s). Any property particulars are not an offer or contract, nor form part of one. **Sonic / Laser Tape:** Measurements taken using a sonic / laser tape measure may be subject to a small margin of error. **All Measurements:** All Measurements are Approximate. **Services Not tested:** The Agent has not tested any apparatus, equipment, fixtures and fittings or services and so cannot verify that they are in working order or fit for the purpose. A Buyer is advised to obtain verification from their Solicitor or Surveyor.

