



MILE



Zenith Close, London £330,000 Leasehold

Mile are pleased to offer this spacious one bedroom flat for sale. The property consists of a large bedroom, a family bathroom, a large reception room with a semi open plan fully fitted kitchen. The apartment also benefits of a private balcony and a secured underground parking space. The property has got an ESW1 certificate and must be seen to avoid disappointment!! Brand new Flooring and in immaculate condition!! Located a short 5-7 min walk to the station and shops.

- BRAND NEW FLOORING
- Immaculate condition
- one bedroom flat
- balcony
- Secure gated parking
- LOCATED 5 - 8 MIN WALK TO STATION
- MUST BE SEEN!!
- Spacious
- lots of storage
- ESW1 Certificate

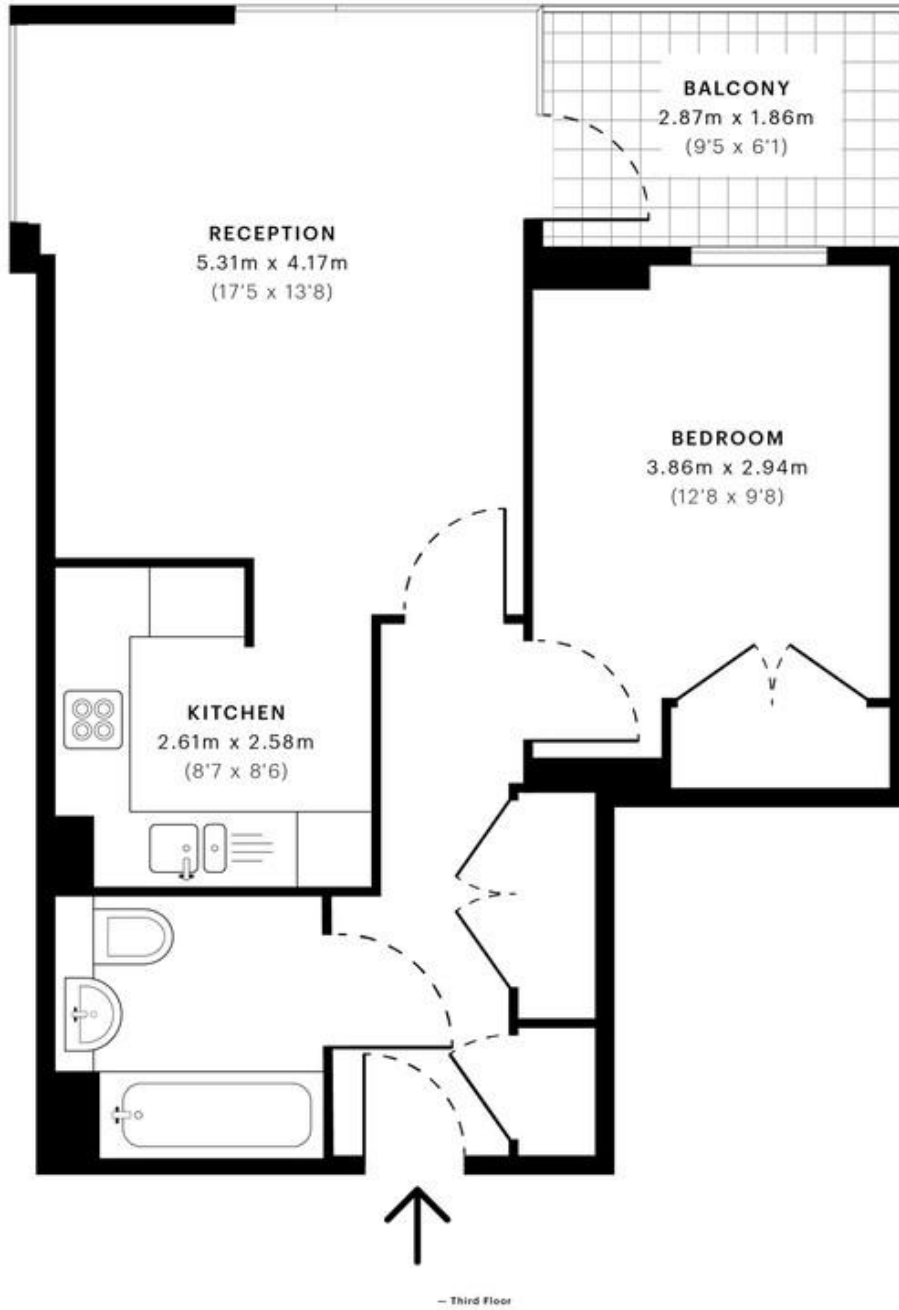


Zenith Close, NW9

CAPTURE DATE 21/09/2022 LASER SCAN POINTS 27,179,383

GROSS INTERNAL AREA

51.59 sqm / 555.31 sqft



GROSS INTERNAL AREA (GIA)
The footprint of the property
51.59 sqm / 555.31 sqft

NET INTERNAL AREA (NIA)
Excludes walls and external features
Includes landings, restricted head height
48.94 sqm / 526.79 sqft

EXTERNAL STRUCTURAL FEATURES
Balconies, terraces, verandas etc.
5.34 sqm / 57.48 sqft

RESTRICTED HEAD HEIGHT
Limited use areas under 2.0m
0.00 sqm / 0.00 sqft

Spec Verified floor plans are produced in accordance with

RICS 38 Residential - 379 sqm / 405.84 sqft

MONEY LAUNDERING REGULATIONS 2003: Intending purchasers will be asked to produce identification documentation at a later stage and we would ask for your co-operation in order that there will be no delay in agreeing the sale.

General: While we endeavour to make our sales particulars fair, accurate and reliable, they are only a general guide to the property and, accordingly, if there is any point which is of particular importance to you, please contact the office and we will be pleased to check the position for you, especially if you are contemplating travelling some distance to view the property.

Measurements: These approximate room sizes are only intended as general guidance. You must verify the dimensions carefully before ordering carpets or any built-in furniture.

Services: Please note we have not tested the services or any of the equipment or appliances in this property, accordingly we strongly advise prospective buyers to commission their own survey or service reports before finalising their offer to purchase.