



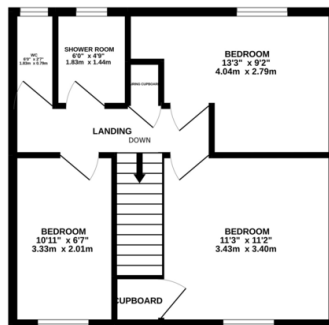
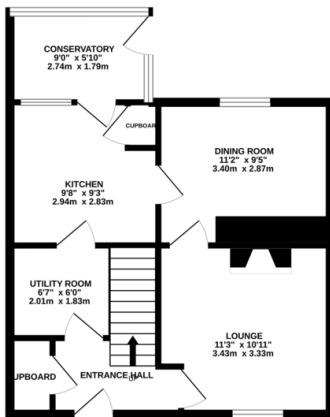
# Property Summary

\*\*\* No Chain \*\*\* Spacious mid town house for sale in Wigston with larger than average rear garden. The accommodation comprises entrance hall, utility room, kitchen, conservatory, dining room, lounge, three bedrooms, shower room, separate w.c., off road parking and rear garden. For more info or to view call Phillips George.

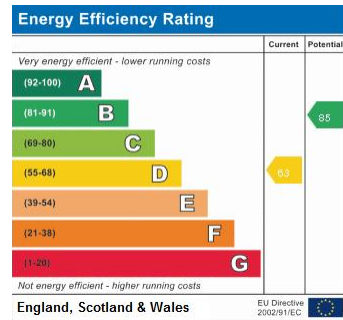


GROUND FLOOR  
454 sq.ft. (42.2 sq.m.) approx.

1ST FLOOR  
420 sq.ft. (39.1 sq.m.) approx.



TOTAL FLOOR AREA: 875 sq.ft. (81.3 sq.m.) approx.  
While every attempt has been made to ensure the accuracy of the floorplan contained here, measurements of floors, windows, rooms and any other items are approximate and no responsibility is taken for any error, omission or mis-statement. This plan is for illustrative purposes only and should be used as such by any prospective purchaser. The services, systems and appliances shown have not been tested and no guarantee as to their operability or efficiency can be given.  
Made with Metropix C5022



- No Chain
- Three Bedrooms
- Mid Town House
- Large Rear Garden
- Utility Room
- Conservatory
- Two Reception Rooms
- Off Road Parking

phillips george | sales & lettings

Agents Note: Whilst every care has been taken to prepare these sales particulars, they are for guidance purposes only. All measurements are approximate and for general guidance purposes only and whilst every care has been taken to ensure their accuracy, they should not be relied upon and potential buyers are advised to recheck the measurements

46 Long Street, Wigston, Leicestershire, LE18 2AH

info@phillipsgeorge.co.uk  
0116 216 8178

