



3 Langstone Terrace | Peverell | Plymouth | PL2 3NS

Guide £170,000-£180,000

A two double bedroom mid terraced house.

This period property is located within a sought after location being within walking distance to local shops, facilities and schools.

Upon inspection you will find, entrance hall, lounge, dining room, kitchen and bathroom downstairs with the two bedrooms upstairs.

Outside is a small front garden with courtyard and garage to the rear.

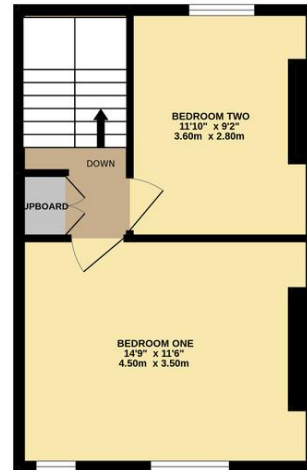
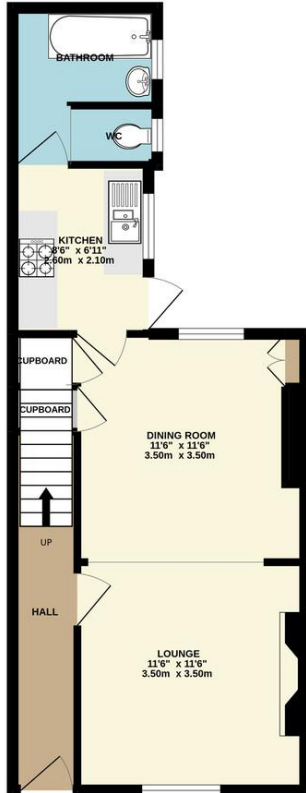
The property is currently let and generates an income of £8,700 pa, but this could increase to £9,600 giving a potential yield of 5.6%.

- Investment Property
- Two Double Bedrooms
- Gas Central Heating System
- Upvc Double Glazed Windows
- Close To Local Facilities
- Close To Schools
- Single Garage



GROUND FLOOR
447 sq.ft. (41.6 sq.m.) approx.

1ST FLOOR
333 sq.ft. (31.0 sq.m.) approx.

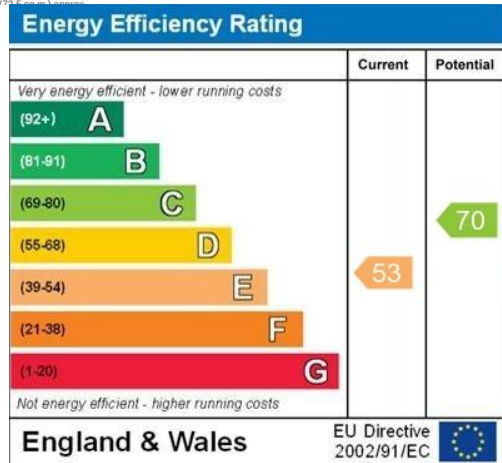


TOTAL FLOOR AREA: 781 sq.ft. (72.6 sq.m.) approx.

Contact Details

48 Ebrington Street
Plymouth
Devon
PL4 9AD

www.athomelettings.com
info@athomeproperty.co.uk
01752 777070



Agents Note: Whilst every care has been taken to prepare these sales particulars, they are for guidance purposes only. All measurements are approximate and for general guidance purposes only and whilst every care has been taken to ensure their accuracy, they should not be relied upon and potential buyers are advised to recheck the measurements