

CraneCourt  
Private Sale

# Make the smart move South



SOUTHMERE

FLOORPLANS

Find the place that fits your lifestyle

FLOOR

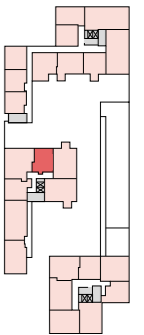
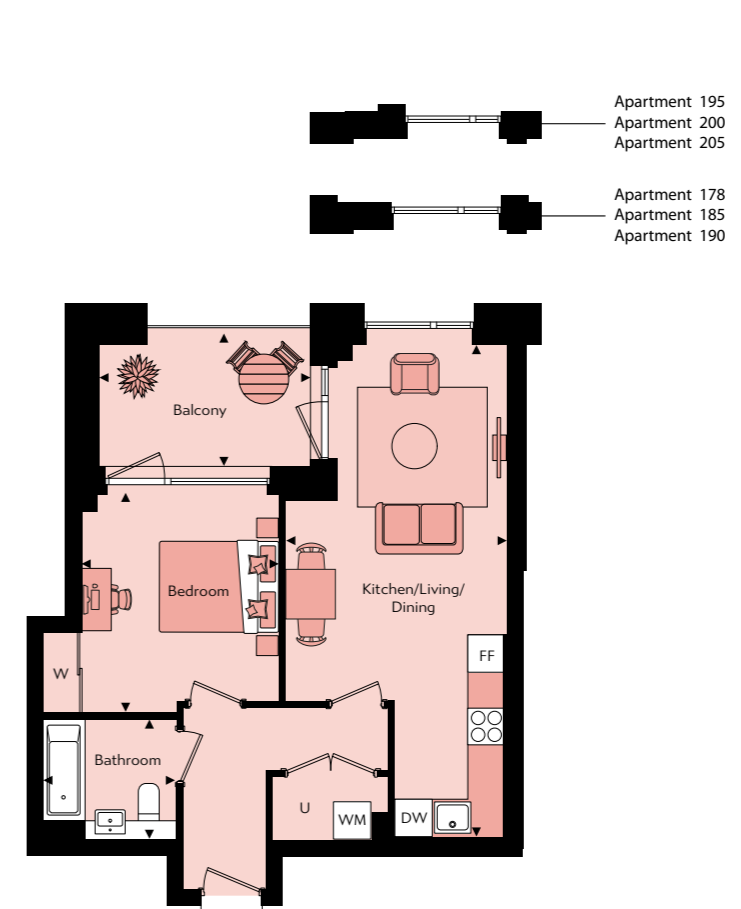


# 1

## Bedroom Apartments

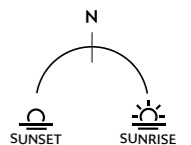
# 1 Bedroom Apartment

Apartments 178, 185, 190, 195, 200 & 205  
Gross Internal Floor Area 50.2m<sup>2</sup> / 540ft<sup>2</sup>



Floor	Apt. No
9	205
8	200
7	195
6	190
5	185
4	178

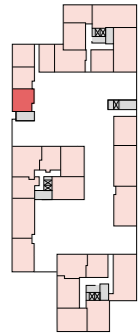
Kitchen/Living/Dining	8.14m x 3.66m	26'8" x 12'0"
Bedroom	3.60m x 3.27m	11'10" x 10'9"
Bathroom	1.98m x 2.70m	6'6" x 7'3"
Balcony	2.22m x 3.49m	7'3" x 11'6"



☒ - Elevator | WM - Washing Machine | FF - Fridge Freezer | DW - Dish Washer | U - Utility | S - Storage cupboard | W - Built-in wardrobe

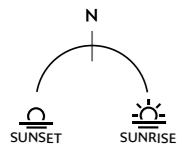
# 1 Bedroom Apartment

Apartments 10, 20, 30 & 40  
Gross Internal Floor Area 50.3m<sup>2</sup> / 541ft<sup>2</sup>



Floor	Apt. No
4	40
3	30
2	20
1	10

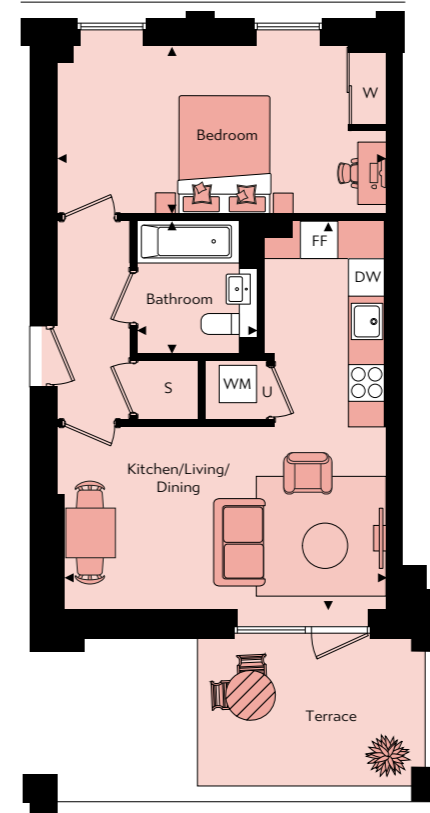
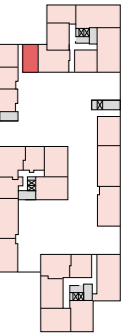
Kitchen/Living/Dining	5.40m x 4.70m	17'9" x 15'5"
Bedroom	4.33m x 3.15m	14'3" x 10'4"
Bathroom	2.00m x 2.20m	6'7" x 7'3"
Balcony	2.39m x 2.78m	7'10" x 9'2"



☒ - Elevator | WM - Washing Machine | FF - Fridge Freezer | DW - Dish Washer | U - Utility | S - Storage cupboard | W - Built-in wardrobe

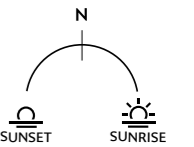
# 1 Bedroom Apartment

Apartment 7  
Gross Internal Floor Area 50.4m<sup>2</sup> / 542ft<sup>2</sup>



Floor	Apt. No
1	7

Kitchen/Living/Dining	5.34m x 6.43m	17'6" x 21'1"
Bedroom	5.44m x 2.77m	17'10" x 9'1"
Bathroom	2.00m x 2.19m	6'7" x 7'2"
Terrace	3.76m x 2.52m	12'4" x 8'4"



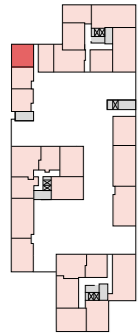
☒ - Elevator | WM - Washing Machine | FF - Fridge Freezer | DW - Dish Washer | U - Utility | S - Storage cupboard | W - Built-in wardrobe

# 1 Bedroom Apartment

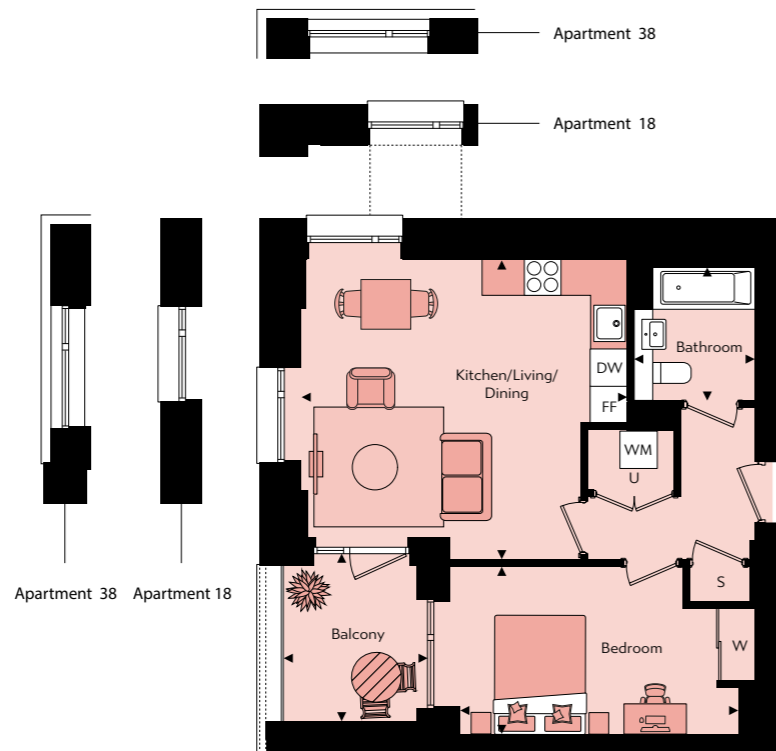
Apartments 8, 18, 28 & 38  
Gross Internal Floor Area 50.4m<sup>2</sup> / 542ft<sup>2</sup>

# 1 Bedroom Apartment

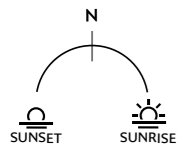
Apartments 9, 19, 29 & 39  
Gross Internal Floor Area 50.4m<sup>2</sup> / 542ft<sup>2</sup>



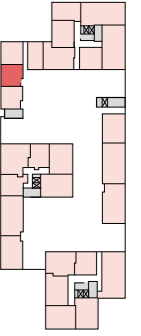
Floor	Apt. No
4	38
3	28
2	18
1	8



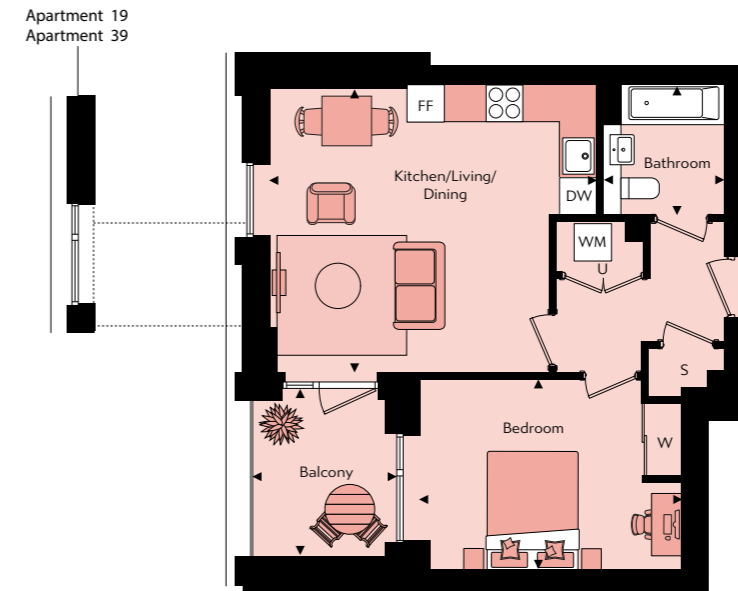
Kitchen/Living/Dining	5.40m x 4.96m	17'9" x 16'4"
Bedroom	4.61m x 2.80m	15'2" x 9'2"
Bathroom	2.00m x 2.20m	6'7" x 7'3"
Balcony	2.39m x 2.78m	7'10" x 9'2"



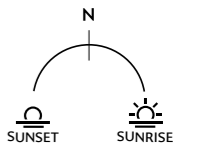
☒ - Elevator | WM - Washing Machine | FF - Fridge Freezer | DW - Dish Washer | U - Utility | S - Storage cupboard | W - Built-in wardrobe



Floor	Apt. No
4	39
3	29
2	19
1	9



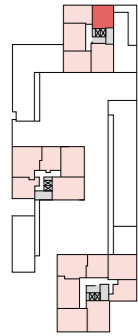
Kitchen/Living/Dining	5.40m x 4.70m	17'9" x 15'5"
Bedroom	4.34m x 3.15m	14'3" x 10'4"
Bathroom	2.00m x 2.20m	6'7" x 7'3"
Balcony	2.39m x 2.78m	7'10" x 9'2"



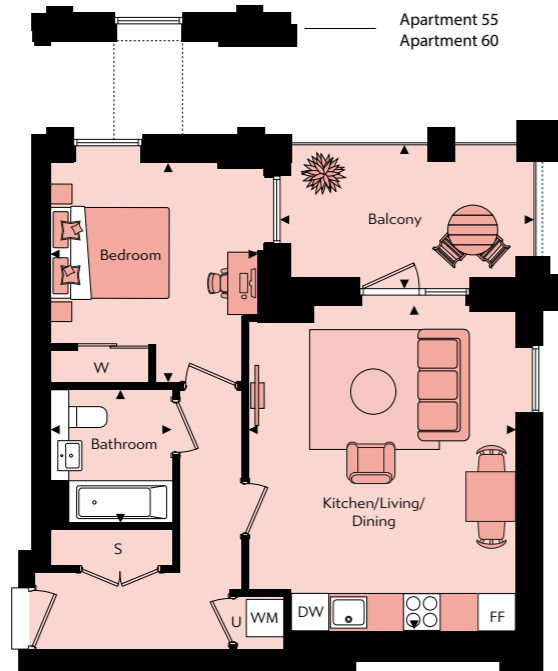
☒ - Elevator | WM - Washing Machine | FF - Fridge Freezer | DW - Dish Washer | U - Utility | S - Storage cupboard | W - Built-in wardrobe

# 1 Bedroom Apartment

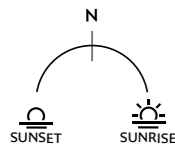
Apartments 45, 50, 55, 60, 65, 70 & 75  
Gross Internal Floor Area 51.2m<sup>2</sup> / 551ft<sup>2</sup>



Floor	Apt. No
11	75
10	70
9	65
8	60
7	55
6	50
5	45



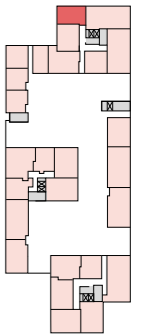
Kitchen/Living/Dining	4.42m x 5.39m	14'6" x 17'8"
Bedroom	3.43m x 3.65m	11'3" x 12'0"
Bathroom	2.00m x 2.20m	6'7" x 7'3"
Balcony	4.19m x 2.22m	3'9" x 7'4"



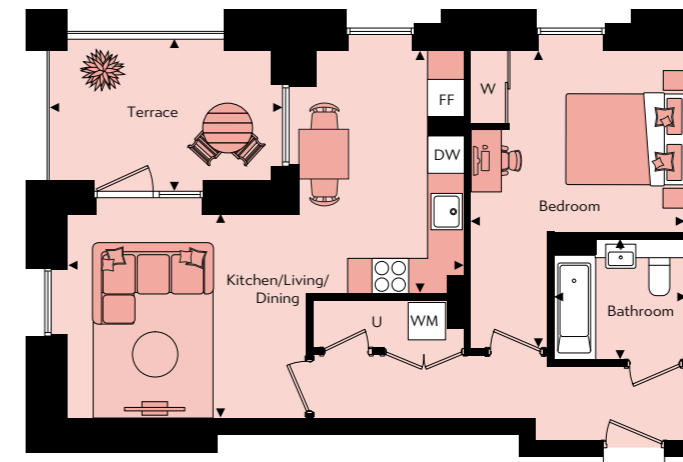
☒ - Elevator | WM - Washing Machine | FF - Fridge Freezer | DW - Dish Washer | U - Utility | S - Storage cupboard | W - Built-in wardrobe

# 1 Bedroom Apartment

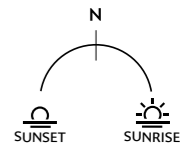
Apartment 5  
Gross Internal Floor Area 52.8m<sup>2</sup> / 568ft<sup>2</sup>



Floor	Apt. No
1	5



Kitchen/Living/Dining	6.56m x 4.02m x 3.37m	21'6" x 13'2" x 11'1"
Bedroom	3.50m x 4.92m	11'6" x 16'2"
Bathroom	2.19m x 2.00m	7'2" x 6'7"
Terrace	3.85m x 2.62m	12'8" x 8'7"



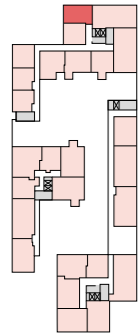
☒ - Elevator | WM - Washing Machine | FF - Fridge Freezer | DW - Dish Washer | U - Utility | S - Storage cupboard | W - Built-in wardrobe

# 1 Bedroom Apartment

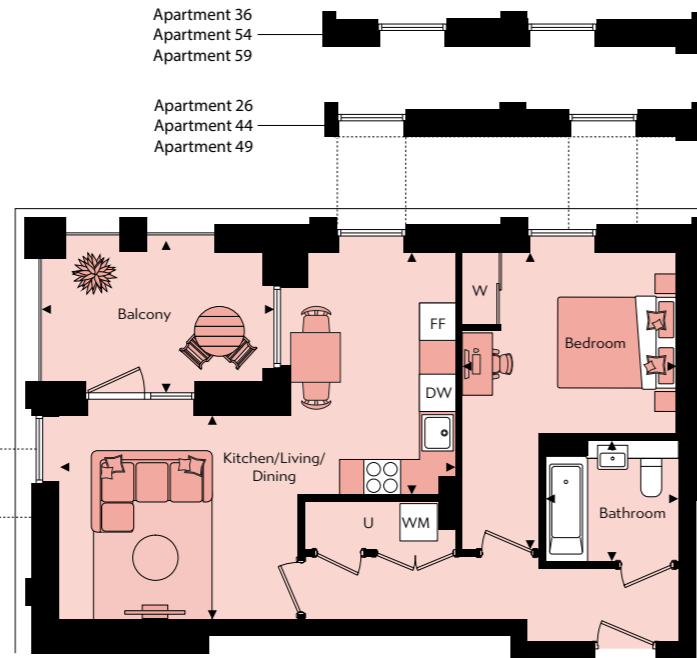
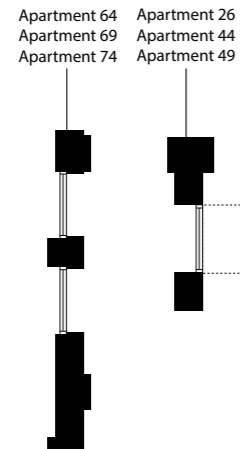
Apartments 16, 26, 36, 44, 49, 54, 59, 64, 69 & 74  
Gross Internal Floor Area 52.8m<sup>2</sup> / 568ft<sup>2</sup>

# 1 Bedroom Apartment

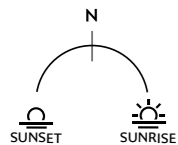
Apartments 15, 25 & 35  
Gross Internal Floor Area 53.1m<sup>2</sup> / 571ft<sup>2</sup>



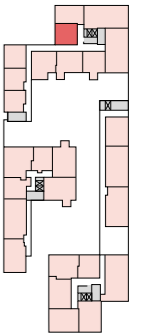
Floor	Apt. No
11	74
10	69
9	64
8	59
7	54
6	49
5	44
4	36
3	26
2	16



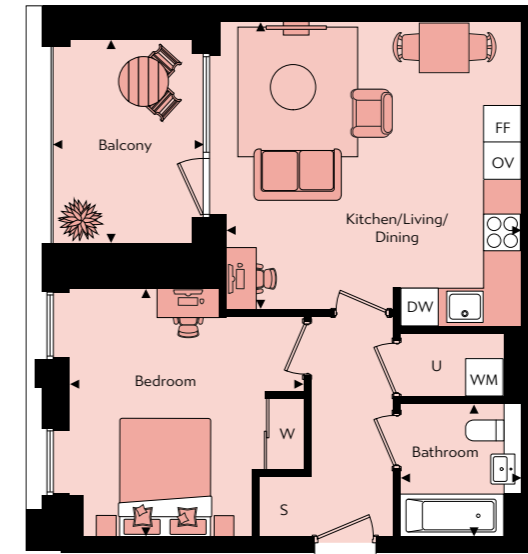
Kitchen/Living/Dining	6.56m x 4.02m x 3.37m	21'6" x 13'2" x 11'1"
Bedroom	3.50m x 4.92m	11'6" x 16'2"
Bathroom	2.19m x 2.00m	7'2" x 6'7"
Balcony	3.85m x 2.62m	12'8" x 8'7"



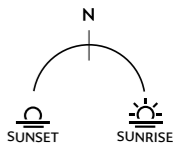
☒ - Elevator | WM - Washing Machine | FF - Fridge Freezer | DW - Dish Washer | U - Utility | S - Storage cupboard | W - Built-in wardrobe



Floor	Apt. No
4	35
3	25
2	15



Kitchen/Living/Dining	4.89m x 4.78m	16'1" x 15'8"
Bedroom	3.87m x 4.09m	12'8" x 13'5"
Bathroom	1.92m x 2.20m	6'4" x 7'3"
Balcony	2.50m x 3.38m	8'3" x 11'1"

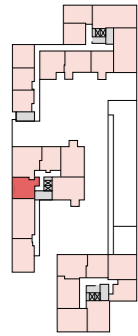


☒ - Elevator | WM - Washing Machine | FF - Fridge Freezer | DW - Dish Washer | OV - Single Tall Oven | U - Utility | S - Storage cupboard | W - Built-in wardrobe

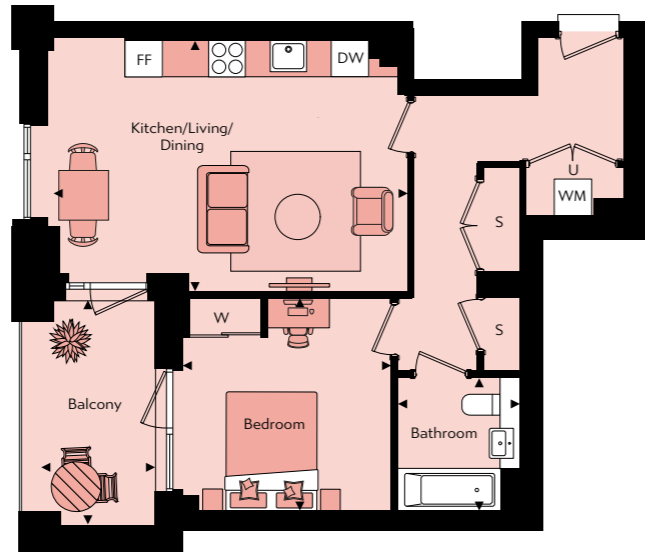
# 1 Bedroom Apartment

Apartment 176

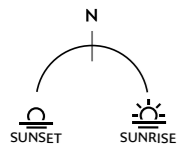
Gross Internal Floor Area 54.6m<sup>2</sup> / 587ft<sup>2</sup>



Floor	Apt. No
4	176



Kitchen/Living/Dining	5.86m x 4.14m	19'3" x 13'7"
Bedroom	3.45m x 3.53m	11'4" x 11'7"
Bathroom	2.01m x 2.19m	6'7" x 7'2"
Balcony	1.88m x 3.72m	6'2" x 12'3"

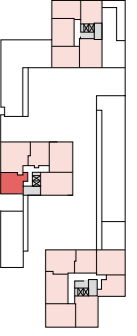


☒ - Elevator | WM - Washing Machine | FF - Fridge Freezer | DW - Dish Washer | U - Utility | S - Storage cupboard | W - Built-in wardrobe

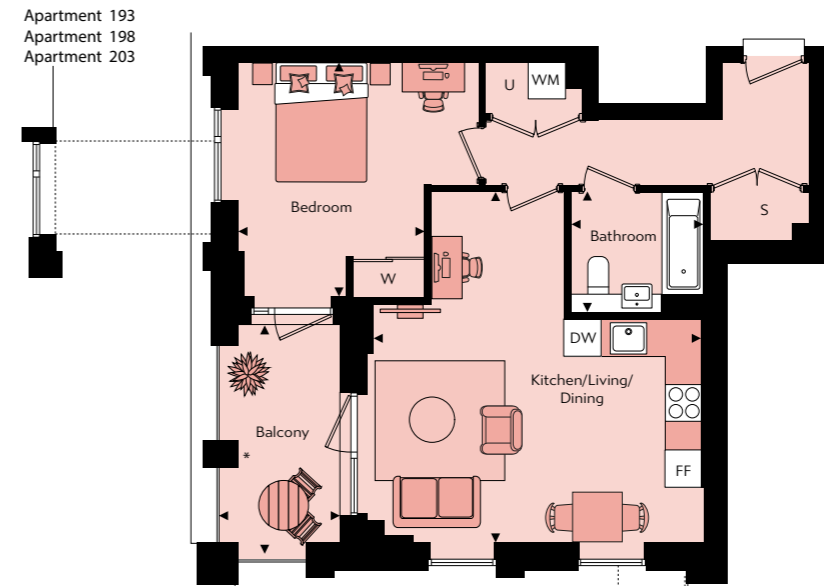
# 1 Bedroom Apartment

Apartments 183, 188, 193, 198 & 203

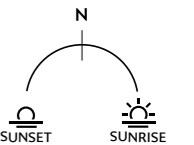
Gross Internal Floor Area 55.1m<sup>2</sup> / 593ft<sup>2</sup>



Floor	Apt. No
9	203
8	198
7	193
6	188
5	183



Kitchen/Living/Dining	5.42m x 5.81m	17'10" x 19'1"
Bedroom	3.10m x 3.86m	10'2" x 12'8"
Bathroom	2.19m x 2.00m	7'2" x 6'7"
Balcony	2.03m x 3.80m	6'8" x 12'6"



☒ - Elevator | WM - Washing Machine | FF - Fridge Freezer | DW - Dish Washer | U - Utility | S - Storage cupboard | W - Built-in wardrobe



# 1 Bedroom Apartment

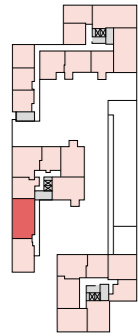
Apartment 181

Gross Internal Floor Area 58.2m<sup>2</sup> / 626ft<sup>2</sup>

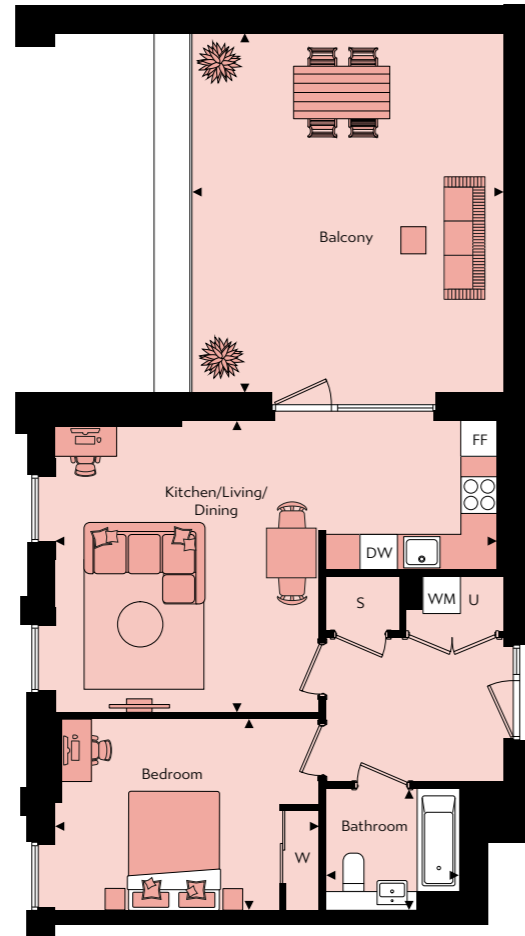
# 1 Bedroom Apartment

Apartments 2, 12, 22 & 32

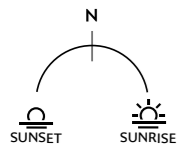
Gross Internal Floor Area 61.6m<sup>2</sup> / 663ft<sup>2</sup>



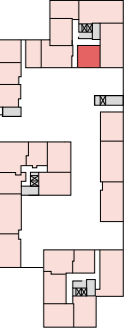
Floor	Apt. No
4	181



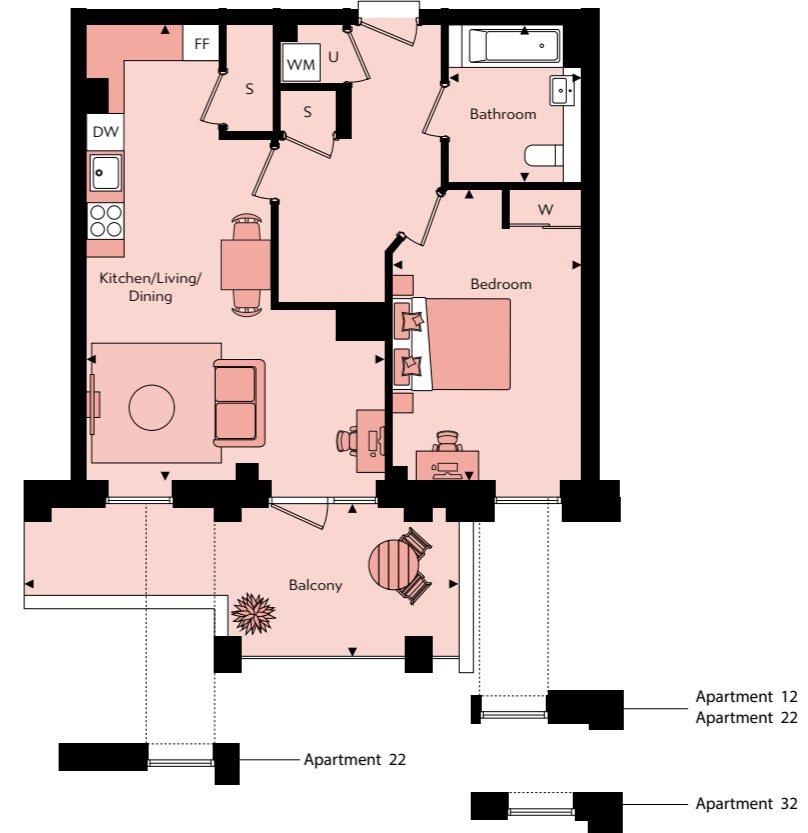
Kitchen/Living/Dining	4.82m x 7.31m	15'10" x 24'0"
Bedroom	3.17m x 4.37m	10'5" x 14'4"
Bathroom	1.99m x 2.20m	6'7" x 7'3"
Balcony	5.97m x 5.16m	19'7" x 16'11"



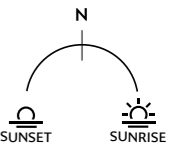
☒ - Elevator | WM - Washing Machine | FF - Fridge Freezer | DW - Dish Washer | U - Utility | S - Storage cupboard | W - Built-in wardrobe



Floor	Apt. No
4	32
3	22
2	12
1	2



Kitchen/Living/Dining	4.93m x 7.54m	16'2" x 24'9"
Bedroom	3.14m x 4.81m	10'4" x 15'10"
Bathroom	2.19m x 2.60m	7'2" x 8'6"
Balcony	7.11m x 2.53m	23'4" x 8'4"

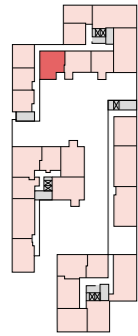


☒ - Elevator | WM - Washing Machine | FF - Fridge Freezer | DW - Dish Washer | U - Utility | S - Storage cupboard | W - Built-in wardrobe | ♿ Wheelchair adaptable unit

# 1 Bedroom Apartment

Apartments 14, 24 & 34

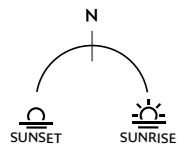
Gross Internal Floor Area 68.2m<sup>2</sup> / 734ft<sup>2</sup>



Floor	Apt. No
4	34
3	24
2	14



Kitchen/Living/Dining	5.85m x 7.31m	19'2" x 24'0"
Bedroom	3.33m x 4.81m	10'11" x 15'10"
Bathroom	2.20m x 2.60m	7'3" x 8'6"
Balcony	6.31m x 2.69m	20'9" x 8'10"



☒ - Elevator | WM - Washing Machine | FF - Fridge Freezer | DW - Dish Washer | U - Utility | S - Storage cupboard | W - Built-in wardrobe

# 2

Bedroom Apartments

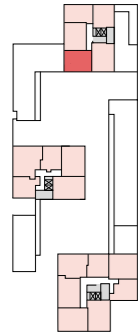


# 2 Bedroom Apartment

Apartments 42, 47, 52, 57, 62, 67 & 72  
Gross Internal Floor Area 63.2m<sup>2</sup> / 680ft<sup>2</sup>

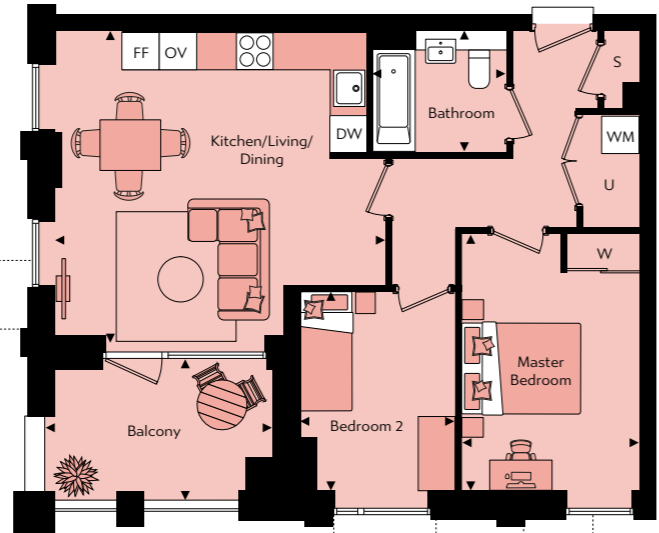
# 2 Bedroom Apartment

Apartment 4  
Gross Internal Floor Area 65.3m<sup>2</sup> / 702ft<sup>2</sup>



Apartment 62  
Apartment 67  
Apartment 72

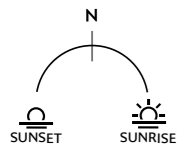
Apartment 52  
Apartment 57



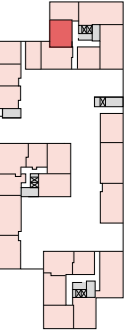
Apartment 52  
Apartment 57  
Apartment 62  
Apartment 67  
Apartment 72

Floor	Apt. No
11	72
10	67
9	62
8	57
7	52
6	47
5	42

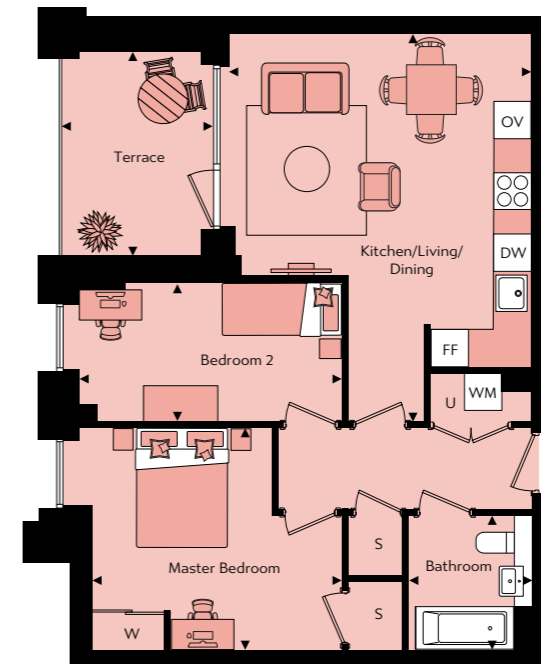
Kitchen/Living/Dining	5.46m x 5.15m	17'11" x 16'11"
Master Bedroom	2.95m x 4.26m	9'8" x 14'0"
Bedroom 2	2.56m x 3.30m	8'5" x 10'10"
Bathroom	2.20m x 2.00m	7'3" x 6'7"
Balcony	3.61m x 2.50m	11'10" x 8'3"



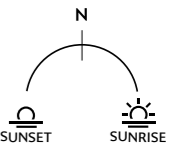
☒ - Elevator | WM - Washing Machine | FF - Fridge Freezer | DW - Dish Washer | OV - Single Tall Oven | U - Utility | S - Storage cupboard | W - Built-in wardrobe



Floor	Apt. No
1	4



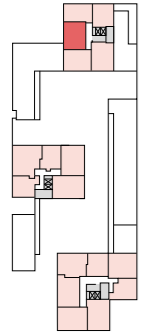
Kitchen/Living/Dining	4.99m x 6.41m	16'5" x 21'1"
Master Bedroom	4.15m x 3.66m	13'7" x 12'0"
Bedroom 2	4.35m x 2.28m	14'3" x 7'6"
Bathroom	2.00m x 2.20m	6'7" x 7'3"
Terrace	2.50m x 3.38m	8'3" x 11'1"



☒ - Elevator | WM - Washing Machine | FF - Fridge Freezer | DW - Dish Washer | OV - Single Tall Oven | U - Utility | S - Storage cupboard | W - Built-in wardrobe

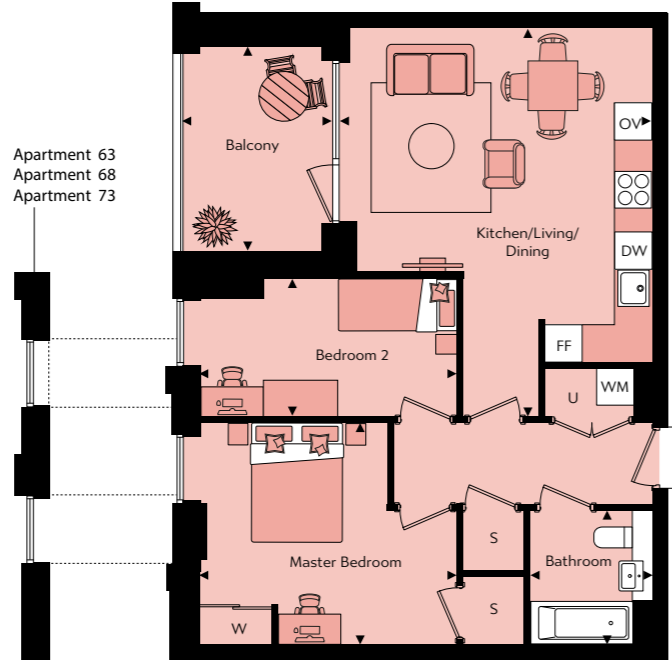
# 2 Bedroom Apartment

Apartments 43, 48, 53, 58, 63, 68 & 73  
Gross Internal Floor Area 65.3m<sup>2</sup> / 702.9ft<sup>2</sup>

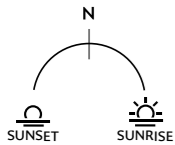


Floor	Apt. No
11	73
10	68
9	63
8	58
7	53
6	48
5	43

Apartment 63  
Apartment 68  
Apartment 73



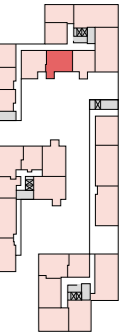
Kitchen/Living/Dining	4.89m x 6.41m	16'1" x 21'1"
Master Bedroom	4.25m x 3.66m	13'11" x 12'0"
Bedroom 2	4.25m x 2.28m	14'0" x 7'6"
Bathroom	2.00m x 2.20m	6'7" x 7'3"
Balcony	2.50m x 3.38m	8'3" x 11'1"



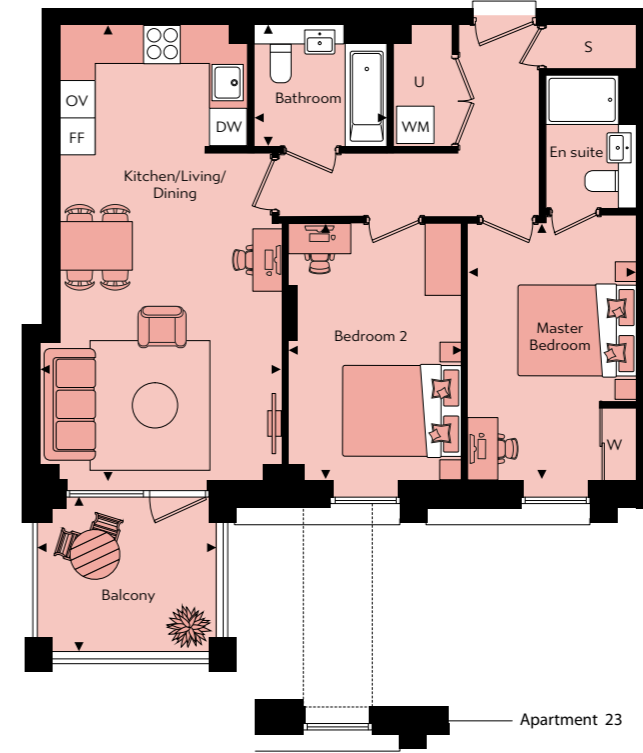
☒ - Elevator | WM - Washing Machine | FF - Fridge Freezer | DW - Dish Washer | OV - Single Tall Oven | U - Utility | S - Storage cupboard | W - Built-in wardrobe

# 2 Bedroom Apartment

Apartments 13, 23 & 33  
Gross Internal Floor Area 72.5m<sup>2</sup> / 780.4ft<sup>2</sup>

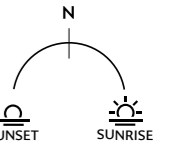


Floor	Apt. No
4	33
3	23
2	13



Apartment 23

Kitchen/Living/Dining	4.04m x 7.54m	13'3" x 24'9"
Master Bedroom	2.78m x 4.26m	9'2" x 14'0"
Bedroom 2	2.86m x 4.26m	9'5" x 14'0"
Bathroom	2.19m x 2.00m	7'2" x 6'7"
En suite	1.50m x 2.20m	4'11" x 7'3"
Balcony	3.09m x 2.69m	10'2" x 8'10"



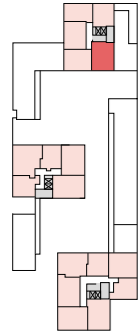
☒ - Elevator | WM - Washing Machine | FF - Fridge Freezer | DW - Dish Washer | OV - Single Tall Oven | U - Utility | S - Storage cupboard | W - Built-in wardrobe

# 2 Bedroom Apartment

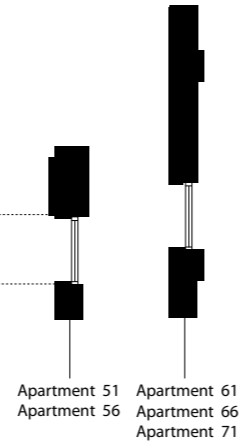
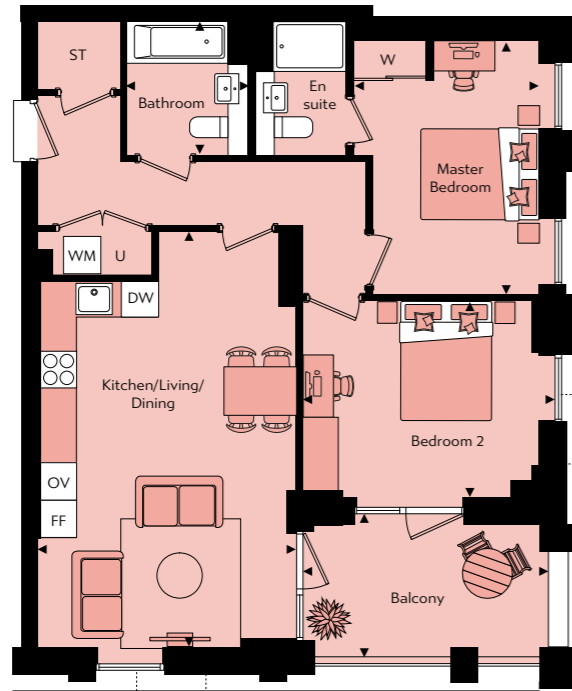
Apartments 41, 46, 51, 56, 61, 66 & 71  
Gross Internal Floor Area 74.0m<sup>2</sup> / 796ft<sup>2</sup>

# 2 Bedroom Apartment

Apartment 182  
Gross Internal Floor Area 74.3m<sup>2</sup> / 799ft<sup>2</sup>

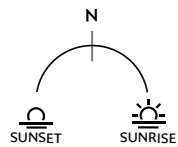


Floor	Apt. No
11	71
10	66
9	61
8	56
7	51
6	46
5	41

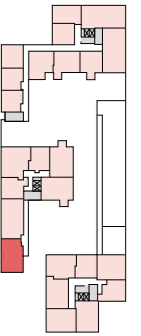


Apartment 51  
Apartment 56

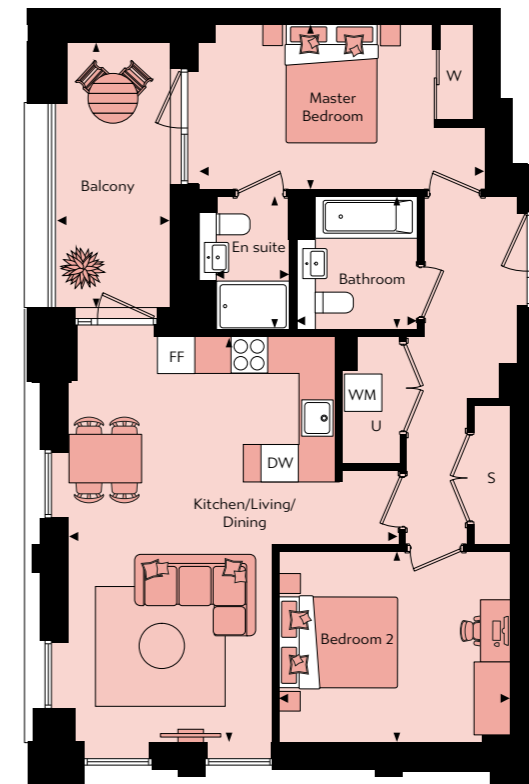
Kitchen/Living/Dining	4.29m x 6.87m	14'1" x 22'7"
Master Bedroom	3.06m x 4.18m	10'1" x 13'9"
Bedroom 2	4.17m x 3.25m	13'8" x 10'8"
Bathroom	2.00m x 2.20m	6'7" x 7'3"
En suite	1.49m x 2.20m	4'11" x 7'3"
Balcony	3.91m x 2.50m	8'3" x 12'4"



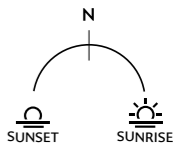
☒ - Elevator | WM - Washing Machine | FF - Fridge Freezer | DW - Dish Washer | OV - Single Tall Oven | U - Utility | S - Storage cupboard | W - Built-in wardrobe



Floor	Apt. No
4	182



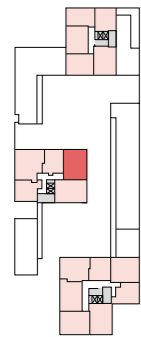
Kitchen/Living/Dining	6.70m x 5.46m	22'0" x 17'11"
Master Bedroom	2.75m x 4.75m	9'0" x 15'7"
Bedroom 2	3.15m x 3.83m	10'4" x 12'7"
Bathroom	2.20m x 1.99m	7'3" x 6'7"
En suite	2.20m x 1.50m	7'3" x 4'11"
Balcony	4.39m x 1.88m	14'5" x 6'2"



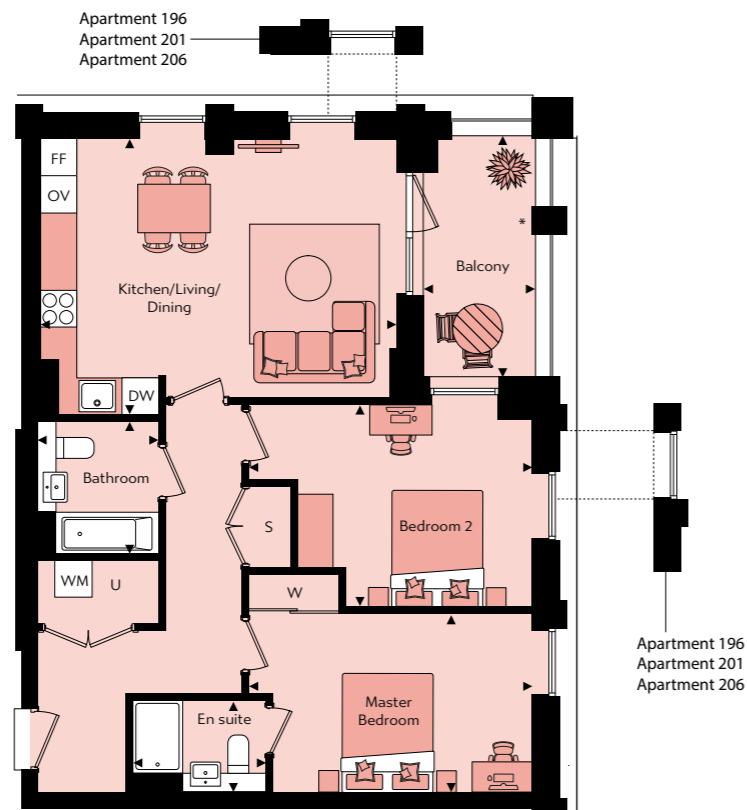
☒ - Elevator | WM - Washing Machine | FF - Fridge Freezer | DW - Dish Washer | U - Utility | S - Storage cupboard | W - Built-in wardrobe

# 2 Bedroom Apartment

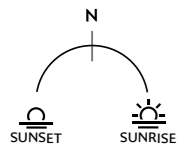
Apartments 186, 191, 196, 201 & 206  
Gross Internal Floor Area 78.1m<sup>2</sup> / 840ft<sup>2</sup>



Floor	Apt. No
9	206
8	201
7	196
6	191
5	186



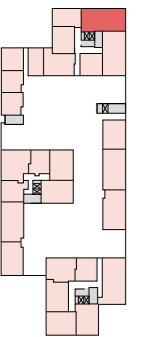
Kitchen/Living/Dining	5.88m x 4.55m	19'3" x 14'1"
Master Bedroom	4.69m x 2.95m	15'5" x 9'8"
Bedroom 2	4.69m x 3.35m	15'5" x 11'0"
Bathroom	1.99m x 2.19m	6'7" x 7'2"
En suite	2.20m x 1.50m	7'3" x 4'11"
Balcony	1.84m x 3.98m	6'1" x 13'1"



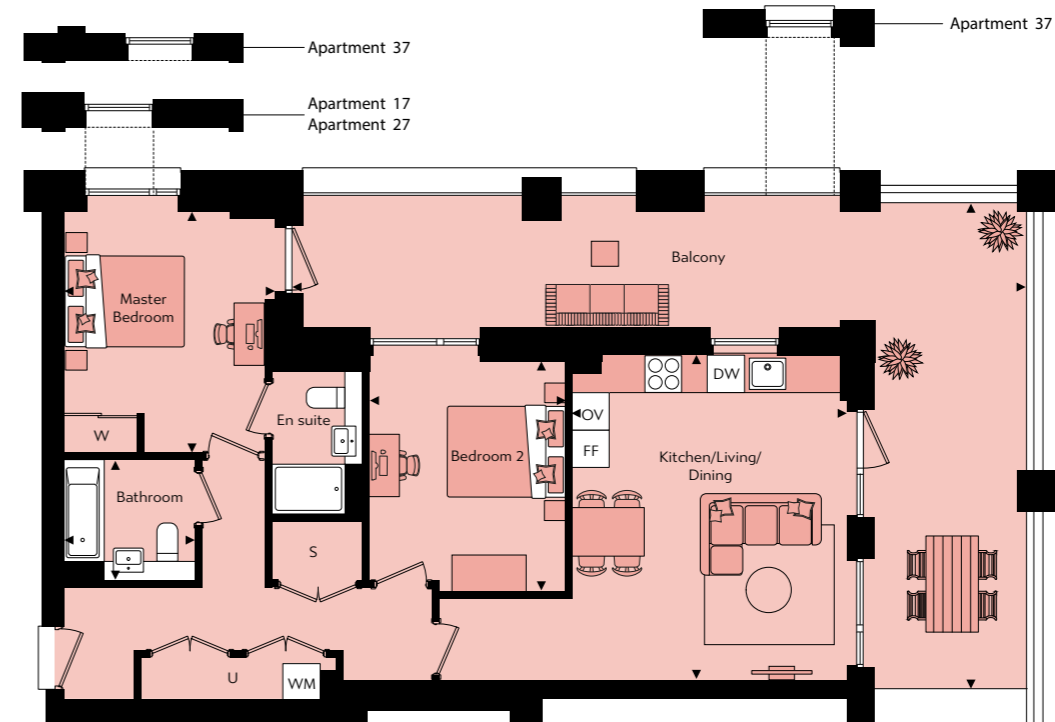
☒ - Elevator | WM - Washing Machine | FF - Fridge Freezer | DW - Dish Washer | OV - Single Tall Oven | U - Utility | S - Storage cupboard | W - Built-in wardrobe

# 2 Bedroom Apartment

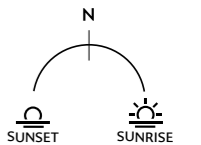
Apartments 6, 17, 27 & 37  
Gross Internal Floor Area 78.8m<sup>2</sup> / 848ft<sup>2</sup>



Floor	Apt. No
4	37
3	27
2	17
1	6



Kitchen/Living/Dining	4.53m x 5.39m	14'11" x 17'8"
Master Bedroom	3.48m x 3.97m	11'5" x 13'0"
Bedroom 2	3.25m x 3.81m	10'8" x 12'6"
Bathroom	2.19m x 2.00m	7'2" x 6'7"
En suite	1.49m x 2.37m	4'11" x 7'9"
Balcony	12.26m x 10.81m	40'3" x 26'10"



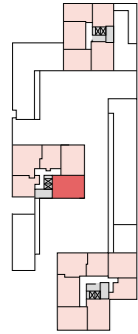
☒ - Elevator | WM - Washing Machine | FF - Fridge Freezer | DW - Dish Washer | OV - Single Tall Oven | U - Utility | S - Storage cupboard | W - Built-in wardrobe

# 2 Bedroom Apartment

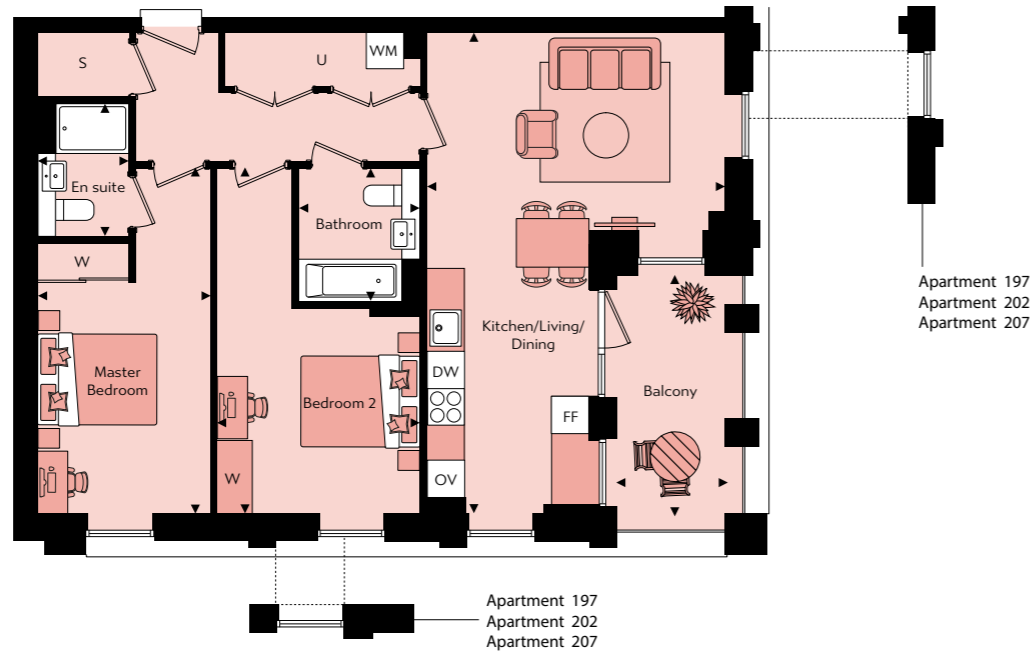
Apartments 187, 192, 197, 202 & 207  
Gross Internal Floor Area 79.7m<sup>2</sup> / 857ft<sup>2</sup>

# 2 Bedroom Apartment

Apartment 179  
Gross Internal Floor Area 87.7m<sup>2</sup> / 943ft<sup>2</sup>



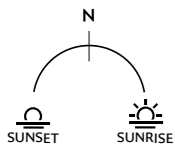
Floor	Apt. No
9	207
8	202
7	197
6	192
5	187



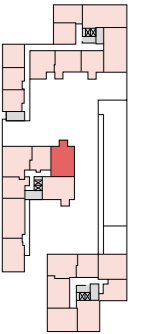
Apartment 197  
Apartment 202  
Apartment 207

Apartment 197  
Apartment 202  
Apartment 207

Kitchen/Living/Dining	4.93m x 7.94m	16'2" x 26'1"
Master Bedroom	2.86m x 5.71m	9'5" x 18'9"
Bedroom 2	3.34m x 5.71m	11'0" x 18'9"
Bathroom	1.99m x 2.19m	6'7" x 7'3"
En suite	1.49m x 2.20m	4'11" x 7'3"
Balcony	1.84m x 3.98m	6'0" x 13'1"



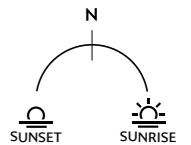
☒ - Elevator | WM - Washing Machine | FF - Fridge Freezer | DW - Dish Washer | OV - Single Tall Oven | U - Utility | S - Storage cupboard | W - Built-in wardrobe



Floor	Apt. No
4	179



Kitchen/Living/Dining	3.95m x 8.13m	13'0" x 26'8"
Master Bedroom	3.60m x 4.55m	12'0" x 14'11"
Bedroom 2	3.00m x 4.55m	9'10" x 14'11"
Bathroom	2.59m x 2.16m	8'6" x 7'1"
En suite	2.19m x 1.79m	7'3" x 5'11"
Balcony	2.35m x 2.51m	7'9" x 9'0"



☒ - Elevator | WM - Washing Machine | FF - Fridge Freezer | DW - Dish Washer | U - Utility | S - Storage cupboard | W - Built-in wardrobe | ♿ - Wheelchair adaptable unit

# 2 Bedroom Apartment

Apartment 180

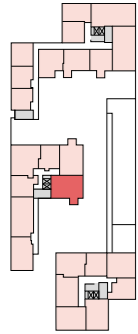
Gross Internal Floor Area 89.6m<sup>2</sup> / 964ft<sup>2</sup>



# 2 Bedroom Apartment

Apartment 3

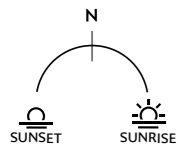
Gross Internal Floor Area 92m<sup>2</sup> / 990ft<sup>2</sup>



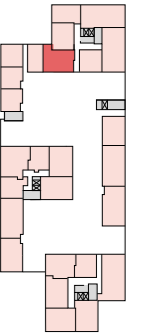
Floor	Apt. No
4	180



Kitchen/Living/Dining	4.49m x 7.89m	14'9" x 25'11"
Master Bedroom	3.67m x 5.69m	12'1" x 18'8"
Bedroom 2	3.00m x 5.69m	9'10" x 18'8"
Bathroom	2.59m x 2.16m	8'6" x 7'1"
En suite	2.19m x 1.79m	7'3" x 5'11"
Balcony	2.73m x 2.47m	9'0" x 8'1"



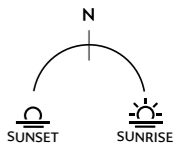
☒ - Elevator | WM - Washing Machine | FF - Fridge Freezer | DW - Dish Washer | U - Utility | S - Storage cupboard | W - Built-in wardrobe | ♿ - Wheelchair adaptable unit



Floor	Apt. No
1	3



Kitchen/Living/Dining	7.68m x 4.03m	25'3" x 13'3"
Master Bedroom	3.58m x 3.70m	11'9" x 12'2"
Bedroom 2	3.40m x 4.88m	11'2" x 16'0"
Bathroom	2.59m x 2.19m	8'6" x 7'3"
En suite	2.20m x 2.06m	7'3" x 6'9"
Terrace	9.12m x 2.53m	29'11" x 8'4"



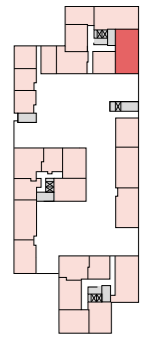
☒ - Elevator | WM - Washing Machine | FF - Fridge Freezer | DW - Dish Washer | OV - Single Tall Oven | U - Utility | S - Storage cupboard | W - Built-in wardrobe | ♿ - Wheelchair adaptable unit



# 2 Bedroom Apartment

Apartments I, II, 2I & 3I

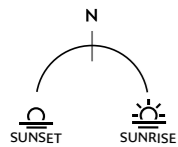
Gross Internal Floor Area 95.4m<sup>2</sup> / 1026ft<sup>2</sup>



Floor	Apt. No
4	3I
3	2I
2	II
1	I



Kitchen/Living/Dining	6.76m x 5.04m	22'2" x 16'7"
Master Bedroom	3.18m x 5.73m	10'5" x 18'10"
Bedroom 2	4.21m x 4.50m	13'10" x 14'9"
Bathroom	2.59m x 2.20m	8'6" x 7'3"
En suite	1.79m x 2.20m	5'1" x 7'3"
Balcony	6.40m x 2.65m	21'0" x 8'9"



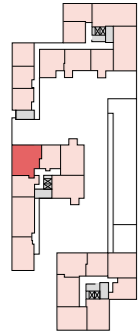
# 3

Bedroom Apartments



# 3 Bedroom Apartment

Apartments 177, 184, 189, 194, 199 & 204  
Gross Internal Floor Area 93.7m<sup>2</sup> / 1008ft<sup>2</sup>

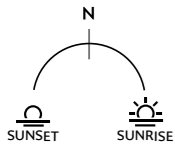


Apartment 194  
Apartment 199  
Apartment 204

Apartment 184  
Apartment 189

Floor	Apt. No
9	204
8	199
7	194
6	189
5	184
4	177

Kitchen/Living/Dining	6.15m x 6.19m	20'2" x 20'4"
Master Bedroom	2.75m x 4.45m	9'0" x 14'7"
Bedroom 2	2.78m x 4.45m	9'2" x 14'7"
Bedroom 3	2.47m x 3.29m	8'1" x 10'10"
Bathroom	2.19m x 2.00m	7'3" x 6'7"
En suite	2.19m x 1.48m	7'3" x 4'11"
Balcony	1.88m x 4.47m	6'2" x 14'8"



☒ - Elevator | WM - Washing Machine | FF - Fridge Freezer | DW - Dish Washer | OV - Single Tall Oven | U - Utility | S - Storage cupboard | W - Built-in wardrobe



Computer generated image is indicative only

[southmere.co.uk](http://southmere.co.uk)

Selling Agent **CBRE**

Every care has been taken in the preparation of this brochure. The details contained herein are for guidance only and should not be relied upon as exactly describing any of the particular material illustrated or written by any order under the Consumer Protection from Unfair Trading Regulations 2008. This information does not constitute a contract, part of a contract or warranty. Dimensions, which are taken from the indicated points of measurement, are for guidance only and are not intended to be used for carpet sizes, appliance space or items of furniture. We work towards 5% tolerance. Apartment areas are provided as gross internal areas and may vary. Bathroom and kitchen layouts are indicative only and are subject to change. Wardrobe size and position may vary. Ceiling height may vary within select apartments. All balcony/terrace dimensions and areas are approximate and may vary. The developer operates a programme of continuous product development. Features, internal and external, may vary from time to time and may differ from those shown in the brochure. Southmere is a marketing name and may not form part of the postal address for these properties. Information correct as of February 2022.

**THAMESMEAD** 

 **Peabody**