



3 Bedroom Semi-Detached Home

Carpenters, Cricklade, Swindon, SN6 6FG

Asking Price Of £315,000

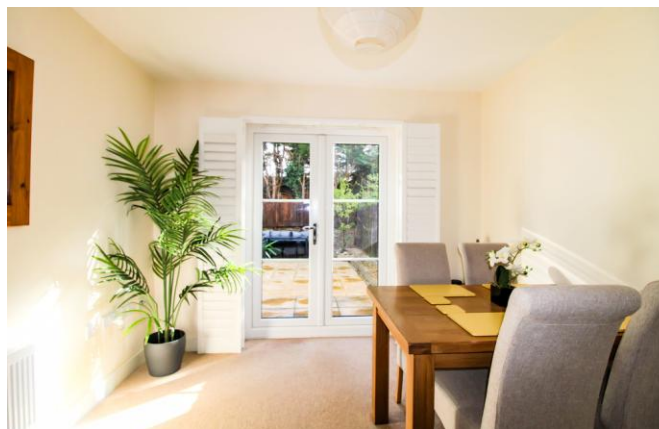
mcfarlane
property.com

Modern Semi Detached Home

Sought After Cul De Sac position

- Three Bedroom Semi Detached
- Small Modern Development
- Modern Fitted Kitchen

A delightful Three Bedroom Semi Detached home in a much sought after Cul-De-Sac position. The well presented and maintained accommodation briefly comprises: Entrance Hallway, Cloakroom, Fitted Kitchen, Living Room with Dining Area. The First Floor there are Three Bedrooms to includes a Master Bedroom with En-Suite Shower Room plus Two Further Bedrooms and a Family Bathroom. There is an Enclosed Garden with Side Access and an Attached Car Port and Driveway. To register please call Tim Stanley or Craig Norris on 01793 751 044.

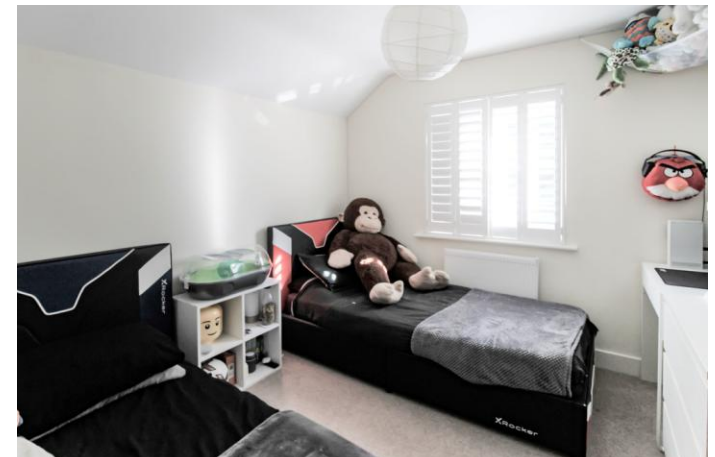


CRICKLADE

Known as the first Town on the Thames and the North Meadow and Spider Head Fritillaries. Cricklade has a thriving High Street with a number of artisan shops and amenities. The neighbouring larger towns of Cirencester and Swindon are ideal for the larger high street outlets plus access to national transport links.

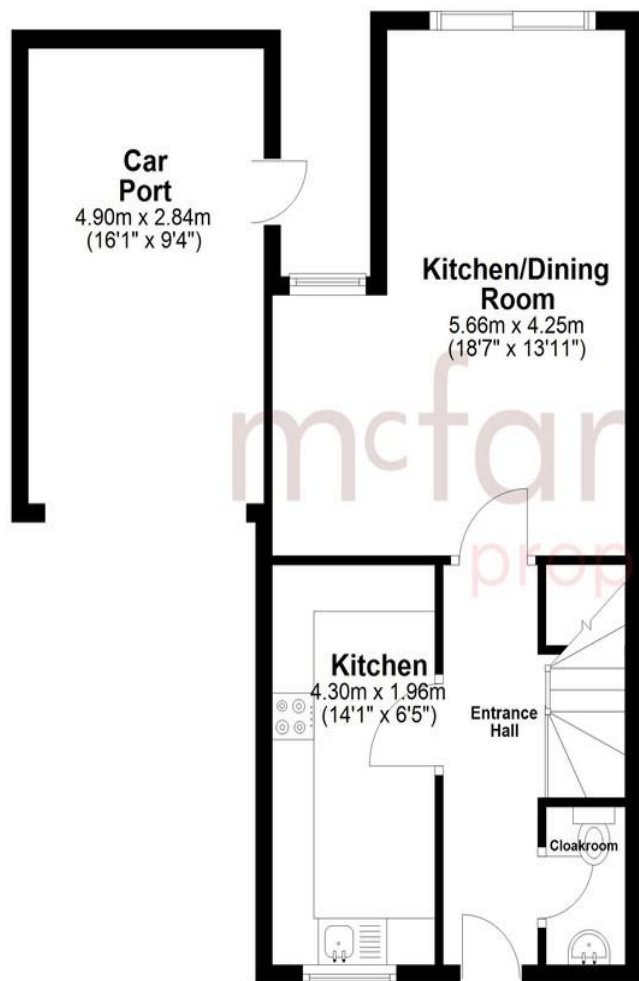


mcfarlane
property.com



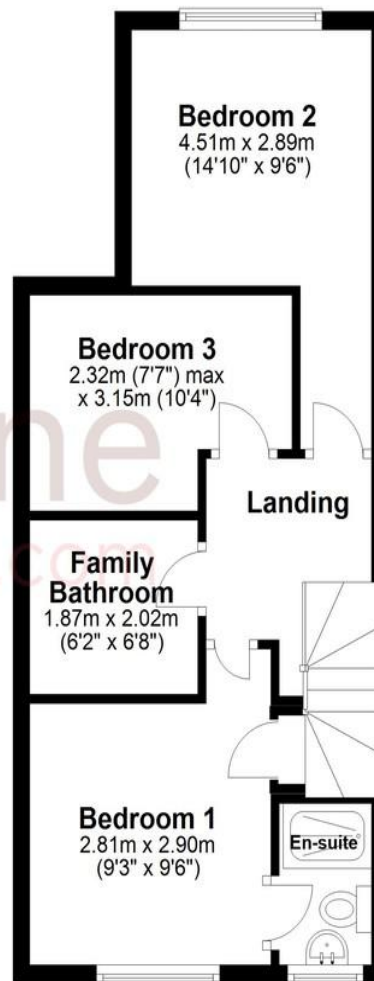
Ground Floor

Approx. 52.9 sq. metres (569.5 sq. feet)



First Floor

Approx. 37.9 sq. metres (407.7 sq. feet)



Total area: approx. 90.8 sq. metres (977.2 sq. feet)

We 
where you
LIVE

Our team are friendly, experienced and are all local. They know it better than they do their own living rooms and can help you find what you're looking for because **we love where we live.**

We would be delighted to show you around this property.

**Because every home
needs a personal touch.**

Tim Stanley

Sales Manager, Cricklade



☎ 01793 751044

✉ tim@mcfarlaneproperty.com

mcfarlaneproperty.com

mcfarlane
property.com

Swindon.

28-30 Wood Street
Swindon SN1 4AB

☎ 01793 611841

Cricklade.

102 High Street
Cricklade SN6 6AA

☎ 01793 751044

Marlborough.

106 High Street
Marlborough SN8 1LT

☎ 01672 514380

Agents Note: Whilst every care has been taken to prepare these sales particulars, they are for guidance purposes only. All measurements are approximate are for general guidance purposes only and whilst every care has been taken to ensure their accuracy, they should not be relied upon and potential buyers are advised to recheck the measurements