



Tamerton Foliot Road | Looseleigh Cross | Plymouth

Guide £450,000-£475,000

An extended semi-detached house situated within this popular location.

This stunning five bedroom family home has been finished to a high standard and benefits from an entrance lobby, lounge, dining room, family room, kitchen, utility room and WC on the ground floor.

Whilst the first floor offers four double bedrooms (master with en-suite), a single bedroom and a family bathroom.

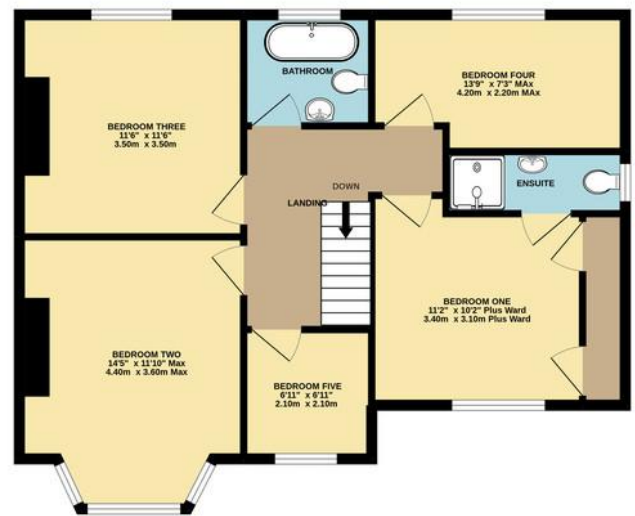
Outside is a large frontage with parking for a number of cars and sun deck, the rear of the property has an enclosed courtyard and outbuildings.

- Semi-Detached House
- Five Bedrooms
- Open Plan Living Room
- Separate Family Room
- Large Kitchen Diner
- Master Suite
- Overlooking Nature Reserve
- Popular Location



GROUND FLOOR
837 sq.ft. (77.8 sq.m.) approx.

1ST FLOOR
727 sq.ft. (67.6 sq.m.) approx.



TOTAL FLOOR AREA: 1564 sq.ft. (145.3 sq.m.) approx.

Whilst every attempt has been made to ensure the accuracy of the floorplan contained here, measurements of doors, windows, rooms and any other items are approximate and no responsibility is taken for any error, omission or mis-statement. This plan is for illustrative purposes only and should be used as such by any prospective purchaser. The services, systems and appliances shown have not been tested and no guarantee as to their operability or efficiency can be given.
Made with Metropix ©2022

Contact Details

48 Ebrington Street
Plymouth
Devon
PL4 9AD

www.athomelettings.com
info@athomeproperty.co.uk
01752 777070

Energy Efficiency Rating		
	Current	Potential
Very energy efficient - lower running costs		
(92+)	A	
(81-91)	B	
(69-80)	C	
(55-68)	D	72
(39-54)	E	64
(21-38)	F	
(1-20)	G	
Not energy efficient - higher running costs		
England & Wales		EU Directive 2002/91/EC

WWW.EPC4U.COM

Agents Note: Whilst every care has been taken to prepare these sales particulars, they are for guidance purposes only. All measurements are approximate are for general guidance purposes only and whilst every care has been taken to ensure their accuracy, they should not be relied upon and potential buyers are advised to recheck the measurements