



 0
Bedroom

 0
Bathroom



C & R Hulme are delighted to offer a large industrial Unit at the Foundry Development situated in Salford. The unit which was developed by Capita & Centric in 2016 is well positioned with great access links into & out of the city. This double unit of approximately 13800 sqft (1285SqMtr) is currently fitted out to a good standard and set out as a Virtual Kitchen lay out with kitchen/ Preparation and fridge storage areas on the ground floor with the 1st floor laid out as offices, staffing and Storage areas.

In Detail

Ground floor

Production Room

Kitchen with Extraction unit intact

3 x Refrigeration areas

2 x 6M high loading doors

1st floor

Large storage area

3 x Offices,

Staff kitchen

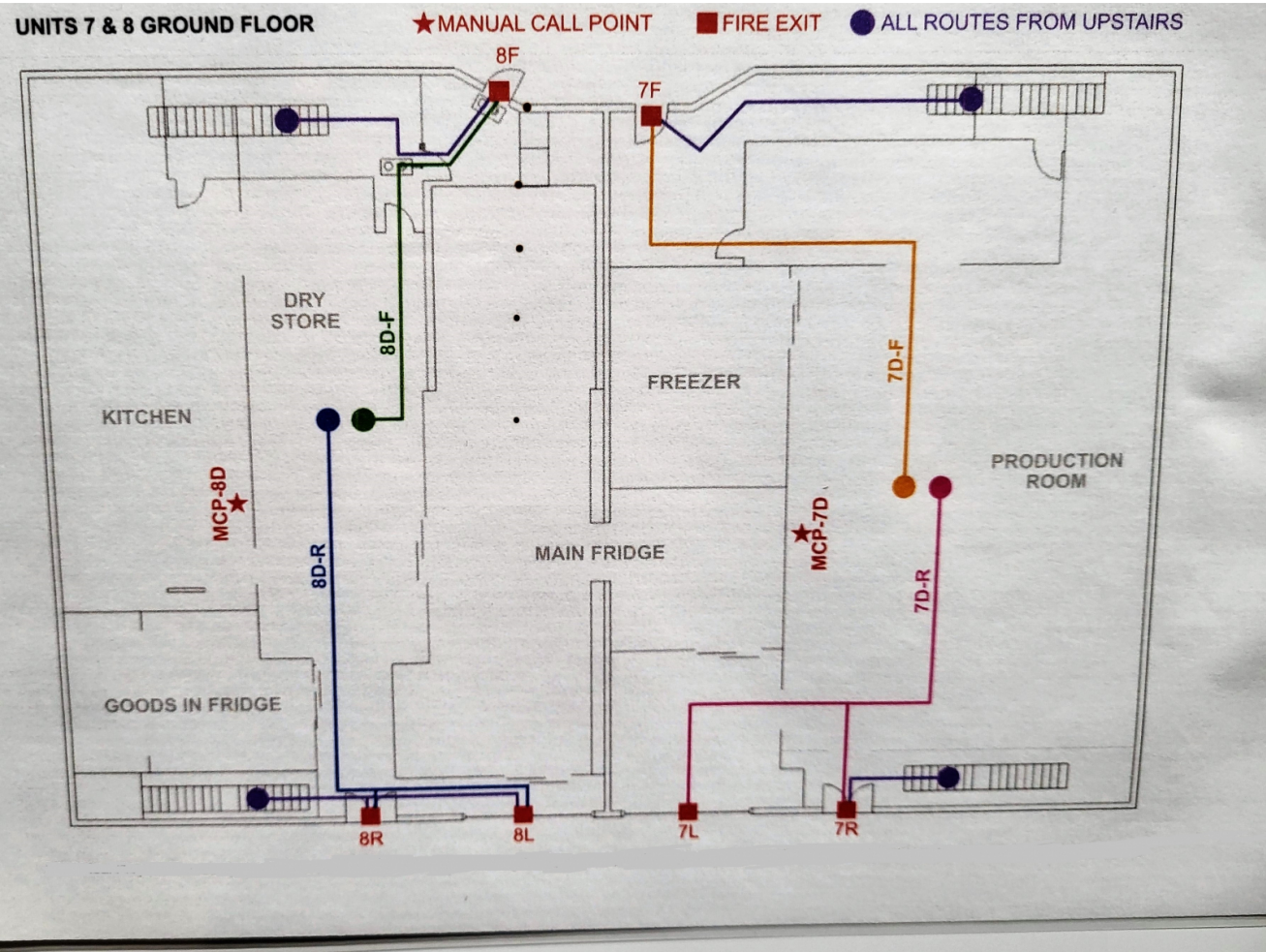
Male & Female W,C as well as

Male & Female changing rooms with showers.

Externally

Parking to the front and rear with good circulation at the rear for HGV access.

Terms: New FRI lease



EPC
Coming soon

The image shows the Energy Performance Certificate (EPC) logo, which consists of a house icon with a vertical bar on the right side divided into seven color-coded sections labeled A through G. Below the logo, the text 'EPC' is written in large red letters, and 'Coming soon' is written in large black letters. A red progress bar is partially filled at the bottom.

