



MILE



MILE



Furness Road, NW10 £2,150 pcm

This sublime first floor apartment of this Edwardian conversion with over 900 ft of living space.

Generously proportioned, light and airy, this apartment boasts three bedrooms, two doubles and a further study/baby room, a great three piece family bathroom, and a lovely kitchen diner area overlooking the garden.

- Three bedrooms
- First floor apartment
- Private garden
- Available Now
- Excellent condition
- Own entrance
- Bright and airy
- Original Victorian features
- Close to shops and transport
- No sharers

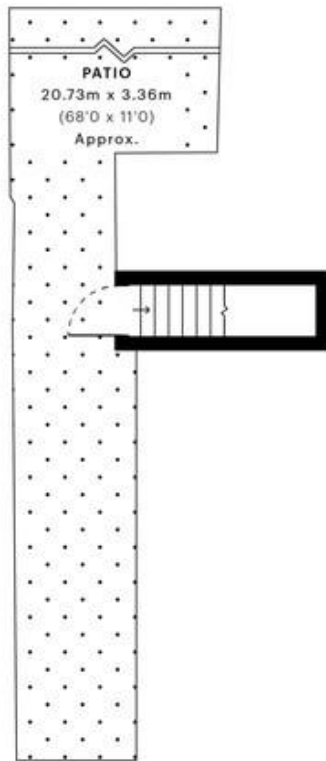


Furness Road, NW10

CAPTURE DATE 25/10/2022 LASER SCAN POINTS 100,240,721

GROSS INTERNAL AREA

86.76 sqm / 933.88 sqft



— Ground Floor



— First Floor



GROSS INTERNAL AREA (GIA)
The footprint of the property
86.76 sqm / 933.88 sqft

NET INTERNAL AREA (NIA)
Excludes walls and external features
Includes landings, restricted head height
77.71 sqm / 839.01 sqft

EXTERNAL STRUCTURAL FEATURES
Balconies, terraces, verandas etc.
0.00 sqm / 0.00 sqft

RESTRICTED HEAD HEIGHT
Limited open areas under 2.0m
0.00 sqm / 0.00 sqft

Spec Verified floor plans are produced in accordance with

PNIS 368:2021/2016 - 91.42 sqm / 979.45 sqft

MONEY LAUNDERING REGULATIONS 2003: Intending purchasers will be asked to produce identification documentation at a later stage and we would ask for your co-operation in order that there will be no delay in agreeing the sale.

General: While we endeavour to make our sales particulars fair, accurate and reliable, they are only a general guide to the property and, accordingly, if there is any point which is of particular importance to you, please contact the office and we will be pleased to check the position for you, especially if you are contemplating travelling some distance to view the property.

Measurements: These approximate room sizes are only intended as general guidance. You must verify the dimensions carefully before ordering carpets or any built-in furniture.

Services: Please note we have not tested the services or any of the equipment or appliances in this property, accordingly we strongly advise prospective buyers to commission their own survey or service reports before finalising their offer to purchase.