



35 Victoria Road
Romford
Essex
RM1 2LH

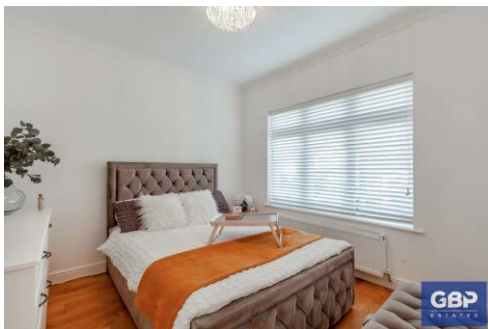
Tel: 01708 504455

Email: sales@gbpestates.co.uk

Website: www.gbpestates.co.uk



Parkside Avenue, Romford £760,000 - £785,000



Beautiful four-bedroom semi-detached bungalow located for access to major transport links both road (M25/A127) and railways (Elizabeth line into London) with off street parking and newly refurbished throughout. Offering four great size bedrooms, including an ensuite bathroom in one. This stylish bungalow offers an open plan lounge/diner inclusive of two sky lights boasting natural light internally and looking out onto a newly landscaped garden. The property is close to schools positioned well for access to local amenities and near the infamous Raphael Park.

- OFF STREET PARKING
- CENTRAL HEATING
- FAMILY HOME
- WELL, PRESENTED THROUGHOUT
- SEMI DETACHED
- MODERN INTERIOR
- OPEN PLAN LOUNGE/DINING ROOM
- ENSUITE
- ACCESS FOR A12, A127 AND M25
- ELIZABETH LINE

ACCOMMODATION

KITCHEN/DINER/LOUNGE 23' 4" x 18' 2"
 (7.11m x 5.54m)

BEDROOM 9' 0" x 7' 8" (2.74m x 2.34m)

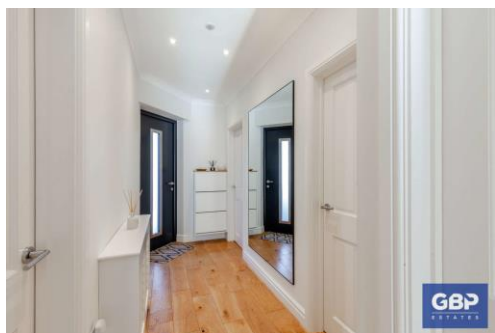
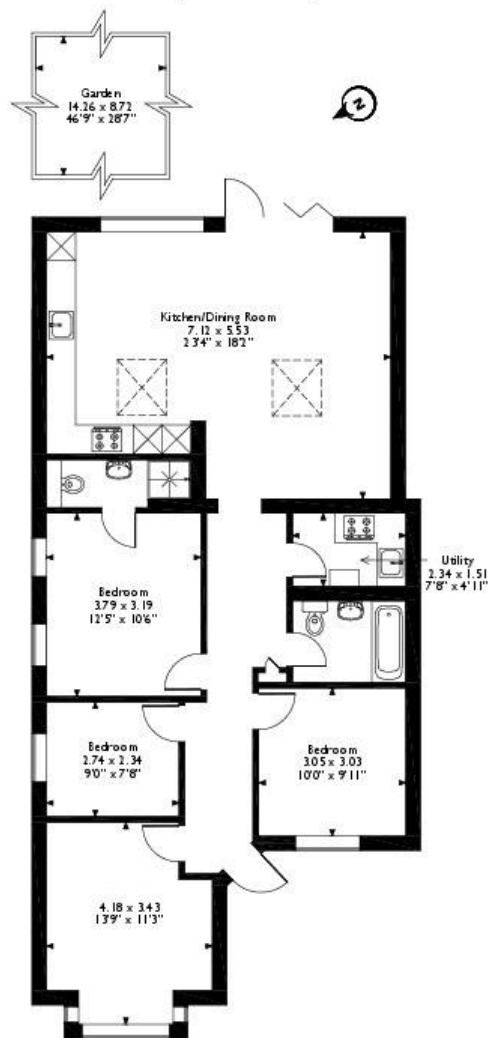
BEDROOM 10' 0" x 9' 11" (3.05m x 3.02m)

BEDROOM 12' 5" x 10' 6" (3.78m x 3.2m)

BEDROOM 13' 9" x 11' 3" (4.19m x 3.43m)

UTILITY ROOM 7' 8" x 4' 11" (2.34m x 1.5m)

GARDEN 46' 9" x 28' 7" (14.25m x 8.71m)



Energy Efficiency Rating		Current	Potential
Very energy efficient - lower running costs			
(92-100)	A		
(81-91)	B		89
(69-80)	C		
(55-68)	D	57	
(39-54)	E		
(21-38)	F		
(1-20)	G		
Not energy efficient - higher running costs			
England, Scotland & Wales		EU Directive 2002/91/EC	



DISCLAIMER: These particulars, whilst believed to be accurate are set out as a general outline only for guidance and do not constitute any part of an offer or contract. Intending purchasers should not rely on them as statements or representation of fact, but must satisfy themselves by inspection or otherwise as to their accuracy. We have not carried out a detailed survey nor tested the services, appliances and specific fittings. Room sizes should not be relied upon for carpets and furnishings. The measurements given are approximate. No person in this firm's employment has the authority to make or give any representation or warranty in respect of the property.