





120 Saltisford

Warwick, Warwick

**** OUTSTANDING MUST VIEW**** Spacious contemporary 3-bedroom end terraced home in Warwick Town Centre with large outdoor space!
Council tax band: B

Tenure: Freehold

- ****ATTENTION FIRST TIME BUYERS****
- Awaiting further internal photos
- 3 Double bedrooms
- ****No onward chain****
- High broadband speed
- ****Contemporary design****
- 0.5 miles to train station
- Town Centre location
- **LARGE OUTDOOR SPACE**



Lounge 11' 10" x 12' 2" (3.6m x 3.7m)

Single opaque glass panel Front UPVC/composite entrance door leading into lounge. Laminate floored spacious lounge having a feature chimney breast with either side recess for optional shelving, single panel radiator, double glazed window to the front elevation furnished with grey blackout vertical blinds. 5 bulb chrome finish light fitting installed to ceiling.

Lounge/Dining Room 11' 10" x 12' 2" (3.6m x 3.7m)

Laminate floored spacious diner/lounge having a feature grey stripe wall tiled chimney breast inset with original cast iron fireplace. A diamond tray Centre ceiling design with single panel low level radiator, wide open plan arch leading to the modern kitchen and dual aspect UPVC windows overlooking the rear and side elevation's furnished with grey blackout vertical blinds.

Fitted Kitchen 11' 10" x 8' 6" (3.6m x 2.6m)

Porcelain floor tiled modern kitchen, having a range of eye and base level units with worksurface having incorporated one and a half bowl sink unit with an eye catching matte black single lever kitchen mixer tap, integrated Fridge/freezer and a gas cooker hob with LED illuminated extractor hood above.

W.C.

Wall to ceiling tiled recessed w.c. incorporating mosaic tiles.

Bedroom 1

11' 10" x 12' 2" (3.6m x 3.7m)

Bedroom 2

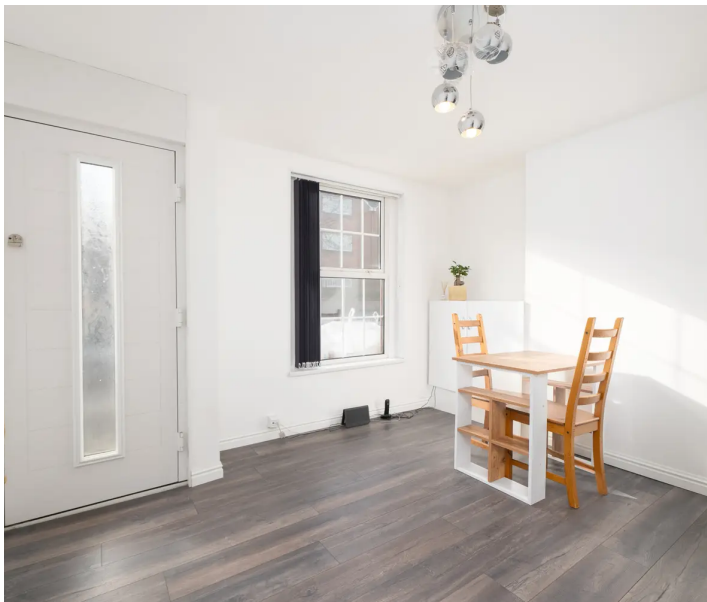
7' 7" x 9' 2" (2.3m x 2.8m)

Bedroom 3

16' 1" x 7' 10" (4.9m x 2.4m)

Shower room

3' 11" x 9' 2" (1.2m x 2.8m)



GROUND FLOOR



1ST FLOOR



Whilst every attempt has been made to ensure the accuracy of the floorplan contained here, measurements of doors, windows, rooms and any other items are approximate and no responsibility is taken for any error, omission or mis-statement. This plan is for illustrative purposes only and should be used as such by any prospective purchaser. The services, systems and appliances shown have not been tested and no guarantee as to their operability or efficiency can be given.
 Made with Metropix ©2022



RDR DASSAUR

Unit 2, Nelson Dale, Warwick, CV34 5LB

01926 268989

admin@rdrdassaur.co.uk