



GRANSMORE GREEN, FELSTED, CM6 3LA

3 bedroom bungalow | £2000 pcm

GRANSMORE GREEN, FELSTED

This 3 bedroom bungalow offers beautiful countryside views and a vast amount of space. The entrance hall gives access to the living room, kitchen and conservatory/dining room area which itself gives access to the garden. This house also boasts an extra three bedrooms. The outside space of this property is magnificent, with two large detached garages, one currently serving as a workshop. The views this property bring are unrivalled, the vast countryside spans around the entire property.



LARGE ENTRANCE HALL

Giving access to rooms:

LIVING ROOM – 20'5" X 13'5"

CONSERVATORY DINING – 15'10" X 17'2"

KITCHEN – 11'4" X 9'11"

INNER LOBBY

With storage and cloakroom

BEDROOM 1 – 11'11" X 10'0"

With incorporated fitted wardrobes

BEDROOM 2 – 10'0" X 10'2"

BEDROOM 3 – 10'0" X 10'2"

With large walk in wardrobe located from hall

FAMILY BATHROOM

OUTSIDE

Located behind private gates, beautiful gardens and views over countryside, an array of outbuildings including:

LARGE DETACHED GARAGE

With eaves storage

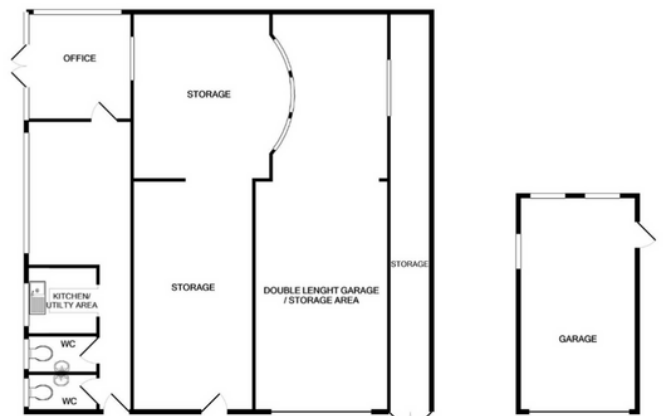
LARGE DOUBLE GARAGE

Currently being used as workshop, with WC facilities, light and power outlets and further storage to the side. With further outbuildings and parking for numerous vehicles

GRANSMORE GREEN, FELSTED



TOTAL APPROX. FLOOR AREA 1344 SQ.FT. (124.9 SQ.M.)
Made with Metropix 02020



TOTAL APPROX. FLOOR AREA 1725 SQ.FT. (160.2 SQ.M.)
Made with Metropix 02020

GENERAL REMARKS & STIPULATIONS

FULL PROPERTY ADDRESS

The Barn Tarquita, Gransmore Green, Felsted, CM6 3LA

COUNCIL TAX BAND

Band E

SERVICES

VIEWING

Strictly by appointment with the selling agent
Pestell & Co.

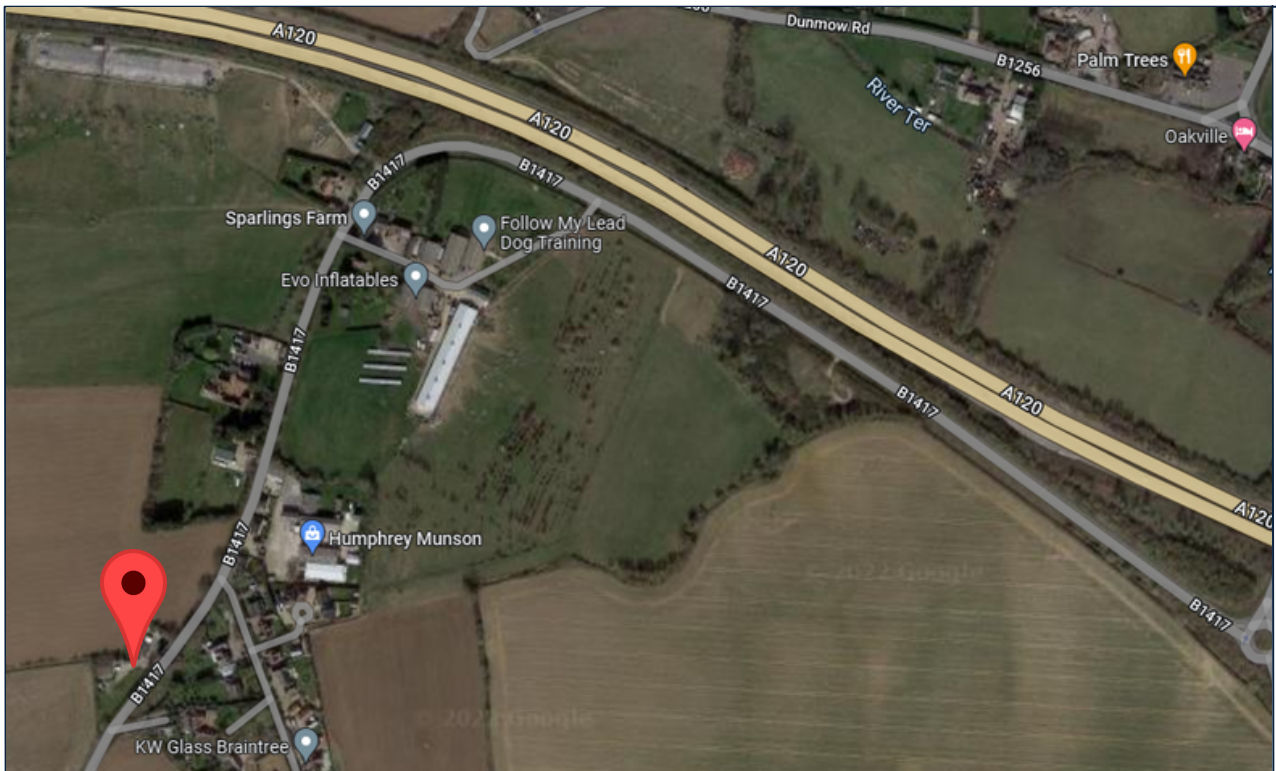
LOCAL AUTHORITY

Uttlesford District Council, London Road, Saffron
Walden, CB11 4ER - 01799 510510

EPC RATING

Current rating: E
Potential rating: C

DIRECTIONS



AGENTS NOTE: The information given in these particulars is intended to help you decide whether you wish to view this property and to avoid wasting your time in viewing unsuitable properties. We have tried to make sure that these particulars are accurate, but to a large extent we have to rely on what the Landlord tells us about the property.