



Flexible terms available

THE PORTWAY CENTRE, SALISBURY, SP4 6EB

OFFICE / SERVICED OFFICE TO LET

240 TO 1,875 SQ FT (22.30 TO 174.19 SQ M)

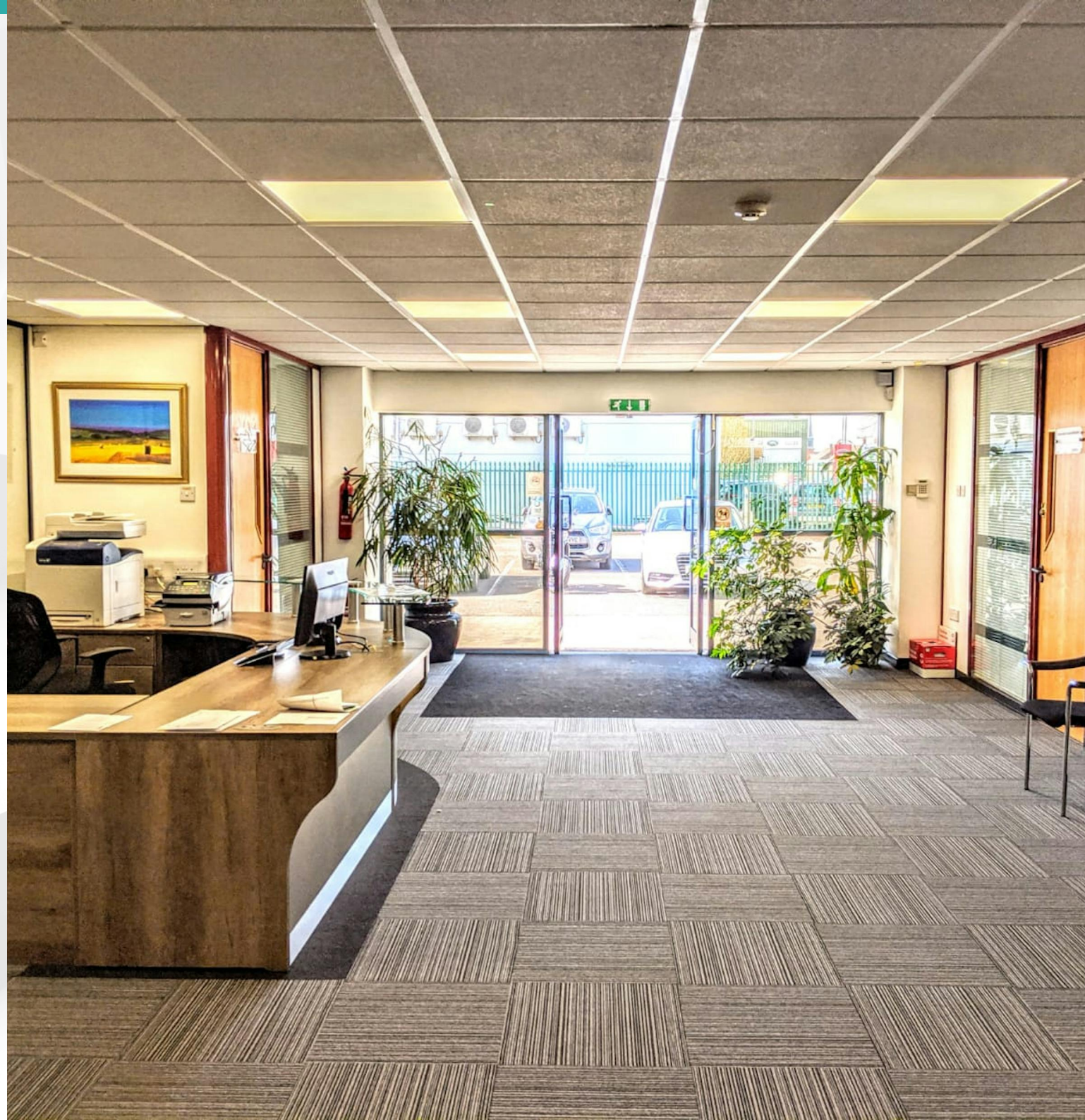


Summary

FLEXIBLE OFFICE SPACE - TO LET
Rents are available for 1, 2 and 3
year terms

Available Size	240 to 1,875 sq ft
Rent	£270 - £2,265 per month
Business Rates	N/A
Service Charge	Upon Enquiry
EPC Rating	Upon enquiry

- Flexible Contracts
- 24/7 Access
- On Site Parking
- Meeting Rooms
- Recently Refurbished

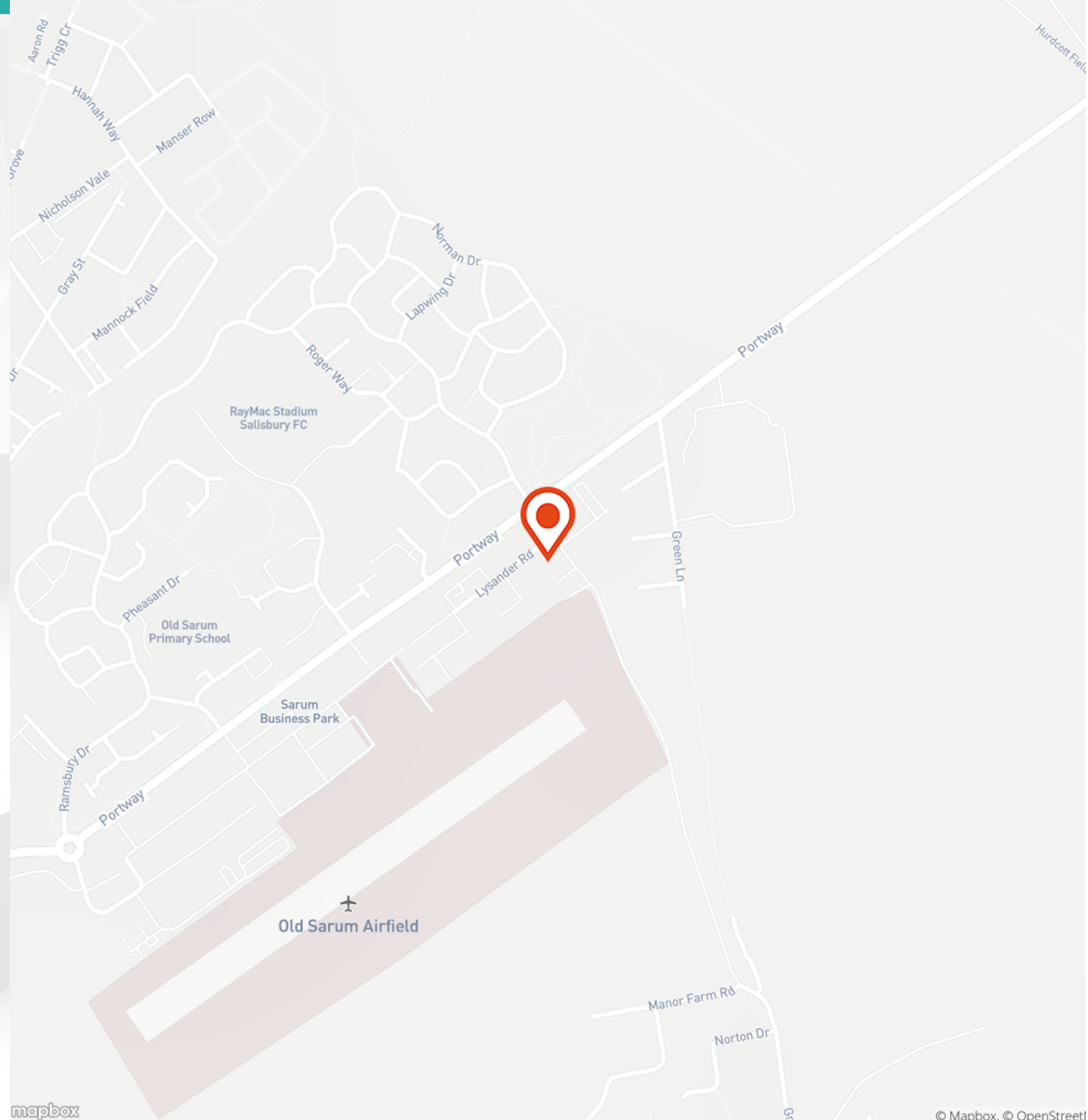


Location



**The Portway Centre, 1 Old
Sarum Park, Salisbury, SP4
6EB**

Situated in the Wiltshire Countryside, off
Portway Road, 3.3 miles north of
Salisbury and 19.5 miles northeast of
Romsey.





Further Details

Description

Contemporary offices to rent in Salisbury. The offices are mostly unfurnished, giving you flexibility to make the space your own. The building benefits from parking, meeting rooms to hire, and 24/7 access. The newest available suite is currently kitted out as lab space, with separate meeting rooms, and storage facilities. Available for tenant fit out.

Accommodation

The accommodation comprises of the following

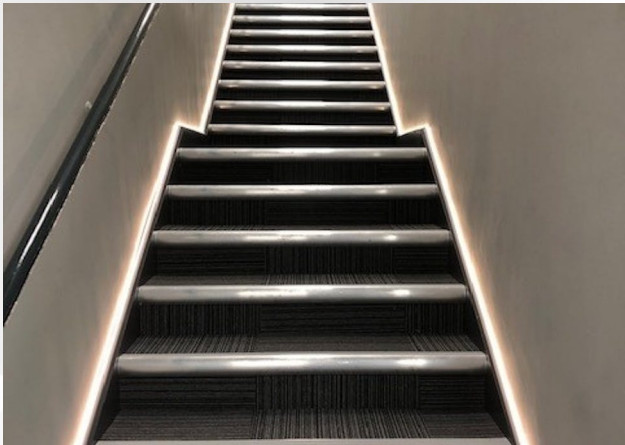
Name	sq ft	sq m	Rent	Service charge
Unit - Suite 2	1,875	174.19	£2,265.63 /month	£1,714.06 /month
Unit - Suite 4	300	27.87	£337.50 /month	£274.25 /month
Unit - Suite 21	240	22.30	£270 /month	£219.40 /month
Unit - Suite 26	265	24.62	£298 /month	On Application
Unit - Suite 30	900	83.61	£1,087.50 /month	£822.75 /month
Total	3,580	332.59		

Terms

Flexible terms are available. Further details on request.

Specification

- Staffed reception (Monday-Friday)
- Onsite car parking & bicycle racks
- Boardroom availability
- High speed internet connection
- CCTV
- Shower room
- Coffee area & kitchen facilities







Enquiries & Viewings



Mary Pearson

mpearson@vailwilliams.com

07393 235 703

023 8082 0935

 **Vail
Williams**
[View on our website](#)