

PORTSMOUTH

Port View, One Port Way,
PO6 4TY



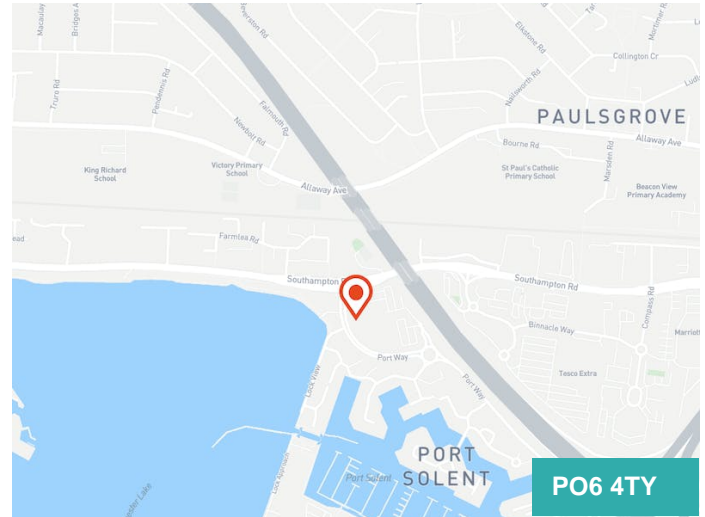
OFFICE / SERVICED OFFICE TO LET

200 TO 2,000 SQ FT

- Refurbished commercial space
- Prominent location with good access to M27
- Suitable for a variety of uses
- 24/7 Access
- Flexible contracts
- Offices for 1 - 30 people
- Inclusive rent
- Attractive waterside location
- Private parking (188 spaces)
- Bike store, shower and drying room

Offices To Let

vailwilliams.com



Summary

Available Size	200 to 2,000 sq ft
Rent	Rent on Application
Business Rates	To be assessed on first occupation
EPC Rating	B

Description

Pure Offices Portsmouth offer smart, contemporary offices to rent in Portsmouth. The offices are unfurnished, giving you flexibility to make the space your own. The building benefits from parking, meeting rooms to hire and 24/7 access. With offices to rent for 1-30 people, available on a flexible contract and gigabit-capable broadband included – you can grow within the building and provide a high standard workplace for your business. The building also benefits from air conditioning and smart amenity spaces to enjoy (both inside and out). The building is located at the entrance to Port Solent Marina Village, fronting the A27, providing convenient access to Portsmouth and Fareham alike together with easy access to the M27. The building is wheelchair accessible and there is a lift for ease of access.

Location

One Port Way comprises a two storey purpose-built office building accommodating a range of national and local occupiers, situated within an established commercial environment. Port Solent is strategically located at the M27 via J12 gateway to Portsmouth, providing excellent accessibility to this waterside location.

Immediately south of the building is a residential and recognised leisure destination, which benefits from a range of waterfront restaurants and bars, together with a David Lloyd Leisure Club and a cinema.

Terms

Full inclusive rent on flexi-lease terms. Further details on request.



Matt Cureton
0238 082 0900
07786735596
mcureton@vailwilliams.com



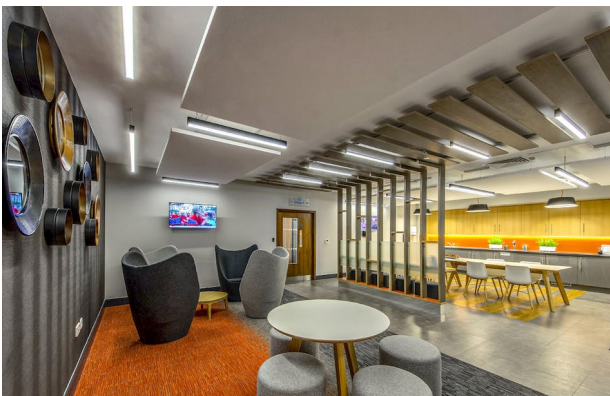
Russell Mogridge
02392203200
07815 737175
rmogridge@vailwilliams.com



Alex Gauntlett
07584 657826
agauntlett@vailwilli

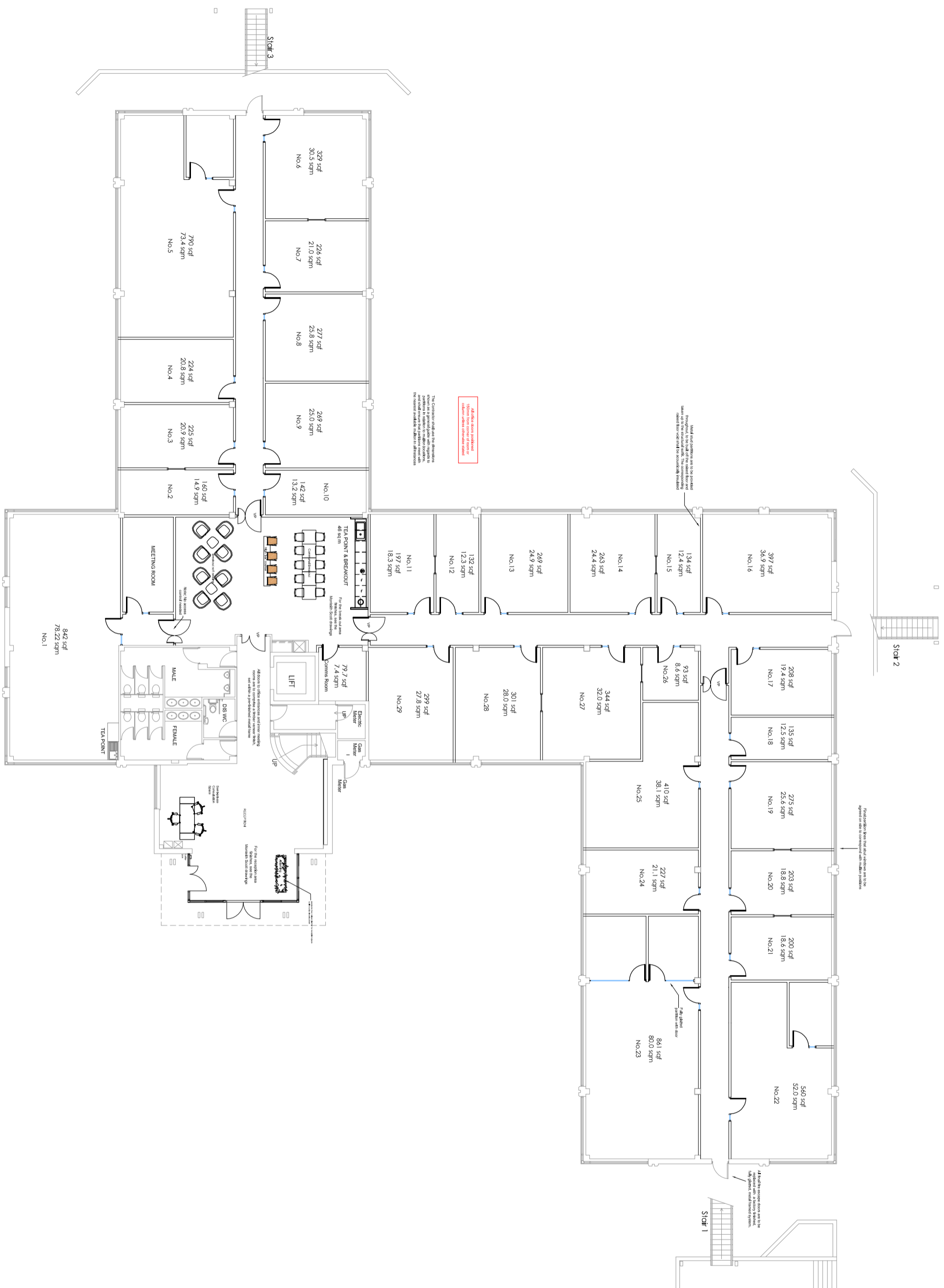
vailwilliams.com

Vail Williams give notice that: a. the particulars are set out as a general outline for guidance and do not constitute an offer or contract; b. all descriptions, dimensions and other details are believed to be correct, any intending purchasers, tenants parties should not rely on them as statements or representations of fact c. All properties are measured in accordance with the RICS property measurement, 1st Edition May 2015 unless designated NIA/GIA/GEA, in which case properties are measured in accordance with the RICS Code of Measuring Practice (6th Edition); d. Any images may be computer generated. Any photographs show only certain parts of the property as they appeared at the time they were taken. Generated on 28/06/2023









Rev.	Description	Date
J	Offices re-numbered & areas added	01-02-17
I	Offices re-numbered	30-01-17
H	Offices 7 & 8 dimensions updated	19-01-17
G	Corridor Doors Updated	17-01-17
F	Partitions Updated	17-01-17
E	General Updates	15-12-16
D	General Updates	09-12-16
C	General Updates	08-12-16
B	Office layout updated	13-10-16
A	Various updates	05-10-16

Proptias
BUILDING & PROJECT CONSULTANTS

Third Floor, 75-77 Colmore Row
Birmingham B3 2AP

Tel: 0845 004 4444 - Fax: 0845 889 1405
www.proptias.com
Email: info@proptias.com

Client:
**NW UK (Port Solent) Limited c/o
Northwood Investors International Ltd**

Project Address:
**No.1 Port Way, Block A
Port Solent, Portsmouth**

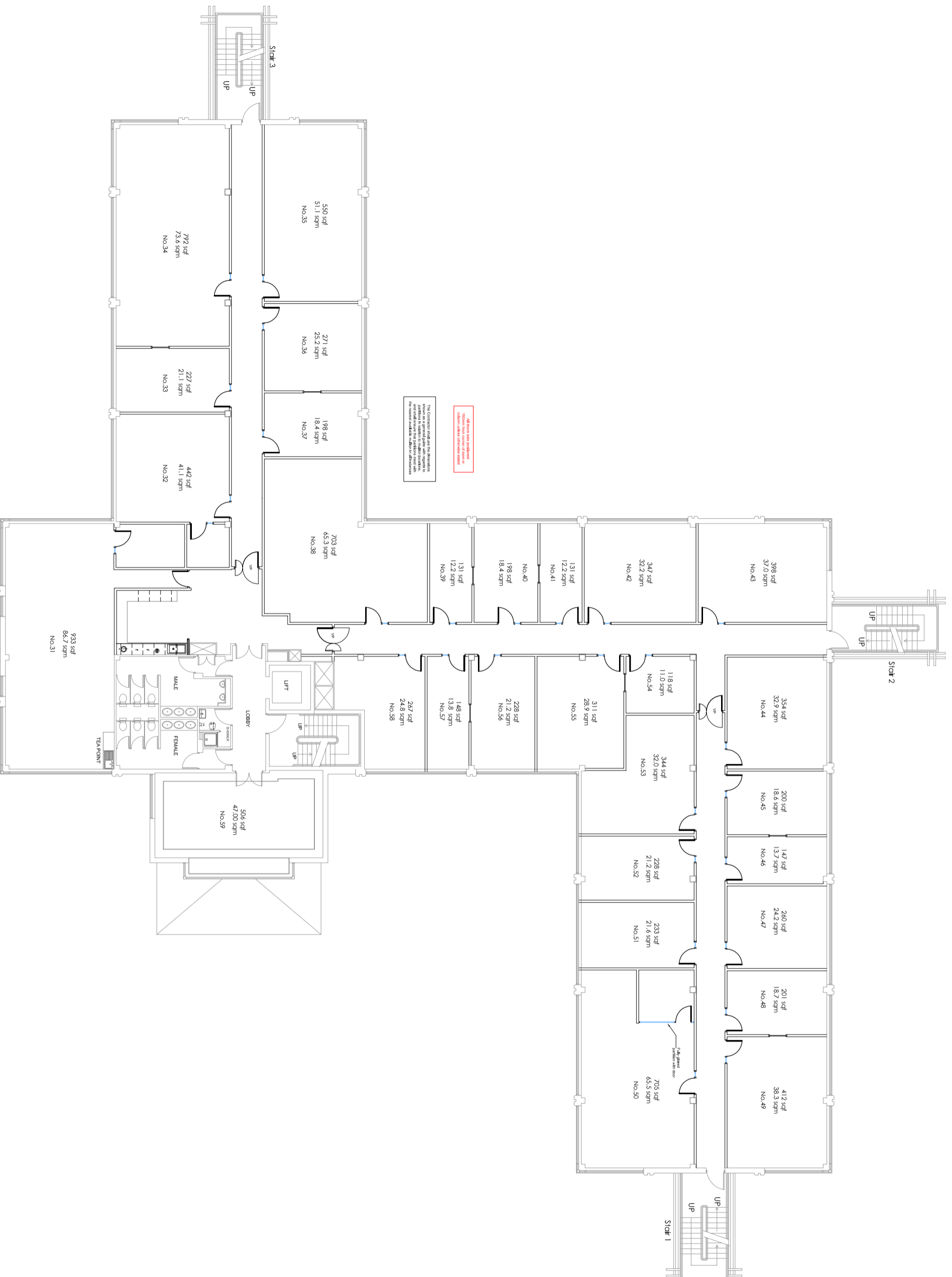
Drawing Title:
**Proposed Ground Floor
General Arrangement Plan**

Project Number: Drawing Number: Revision:
160901 P001 J

Drawing Status:
Construction Issue

Scale: Date:
As Shown @ A3 September 2016

Drawn By: Checked By:
JR CH



First Floor
Scale 1:200

Rev.	Description	Date
I	Offices re-numbered & areas added	01-02-17
H	Office layout amended	30-01-17
G	Shower room and corridor doors updated	17-01-17
F	Partitions updated	17-01-17
E	General Updates	15-12-16
D	General Updates	09-12-16
C	General Updates	08-12-16
B	Layout updated	13-10-16
A	Various updates	05-10-16

Proptias
BUILDING & PROJECT CONSULTANTS
Third Floor, 75-77 Colmore Row
Birmingham B3 2AP
Tel: 0845 004 4444 - Fax: 0845 889 1405
www.proptias.com
Email: info@proptias.com

Client:
**NW UK (Port Solent) Limited c/o
Northwood Investors International Ltd**
Project Address:
**No.1 Port Way, Block A
Port Solent, Portsmouth**
Drawing Title:
**Proposed First Floor
General Arrangement Plan**

Project Number: Drawing Number: Revision:
160901 P002 1
Drawing Status:
Construction Issue
Scale: Date:
As Shown @ A3 September 2016
Drawn By: Checked By:
JR CH

All dimensions are in millimetres unless otherwise stated.
Dimensions to be verified on site.
Do not scale.
Copyright retained by Saverio. All rights reserved.
Drawing not to be reproduced without permission.