



Rose Street, Covent Garden, WC2E
£525 pw

> 1 Bedroom > 1 Bathroom > Unfurnished

TAVISTOCKBOW
RESIDENTIAL



- › One bedroom
- › One bathroom
- › First floor
- › Lots of natural light
- › Open plan reception room/kitchen
- › Unfurnished
- › Secondary glazing
- › Pedestrian walk way
- › Available immediately
- › Close to Leicester Square & Covent Garden undergrounds

A recently redecorated, one bedroom apartment in an ideal location on Rose Street which runs between Long Acre and Floral Street. The apartment is on the first floor and includes a spacious open plan reception room with wood floors, and views to both Rose Street and Long Acre. There is a good sized bathroom, and a small

study/storage room. Available from immediately on an unfurnished basis, 1 to 3 year contract, straight or with a minimum 6 months mutual break clause as negotiated.

Council tax band F.





WHAT WE LOVE

Rose Street is a lovely pedestrian street
The Swedish bakery (Bageriet) next door is amazing!

Seconds from Floral Court and the lovely courtyard of Petersham Nurseries

Moments from Sevendials and its many boutique shops & restaurants

Very well priced for the size of property.



Floorplan

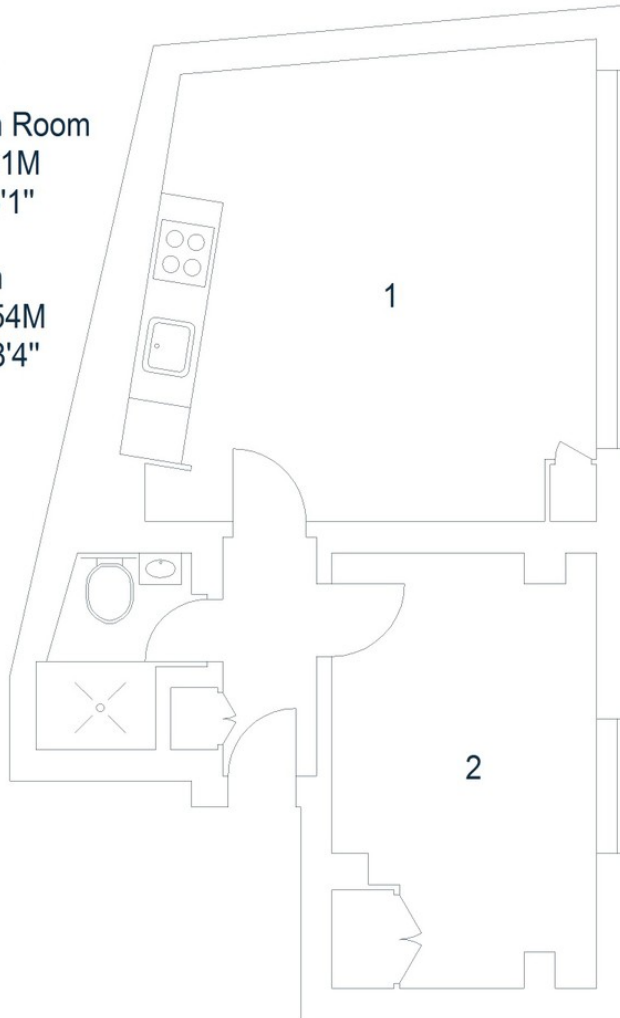
Rose Street, WC2

Approximate Gross Internal Area 37 sq m / 398 sq ft

First Floor

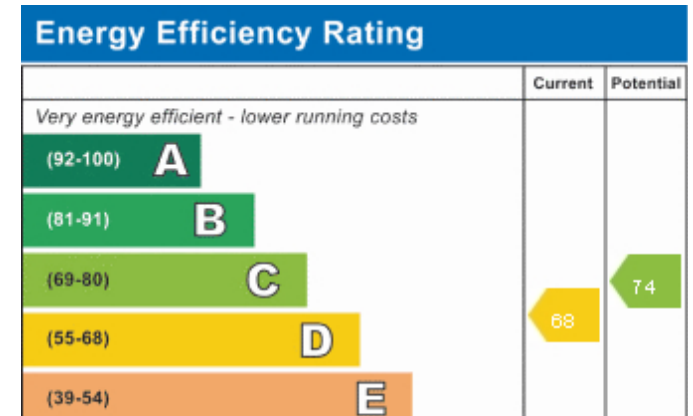
1 Kitchen /
Reception Room
4.63 x 4.61M
15'2" x 15'1"

2 Bedroom
4.22 x 2.54M
13'10" x 8'4"



Floor Plan produced for Tavistock Bow by Mays Floorplans © . Tel 020 3397 4594
Illustration for identification purposes only, not to scale.


EPC





About Us

Tavistock Bow is an independent residential agency based in Covent Garden. We are niche, boutique, creative, knowledgeable, professional and approachable. We love what we do and that's why we do it.

Contact Us

- a.** 21 New Row, Covent Garden, WC2N 4LE
 - t.** 020 7477 2177
 - e.** hello@tavistockbow.com
 - w.** tavistockbow.com
-  /tavistockbow

 /tavistockbow

 @tavistockbow

