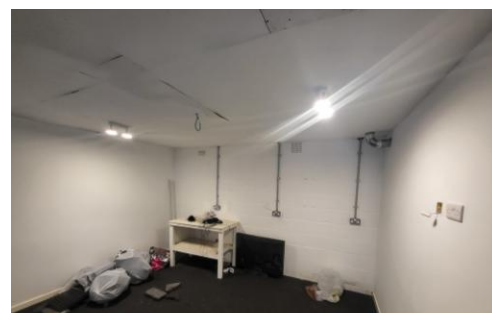
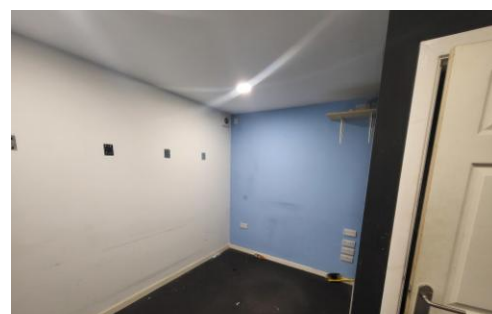




BARKERS

OPENING DOORS FOR YOU



Offers In Excess Of £140,000

Cavendish Place , Pudsey, LS28 6AH

Property Description

DESCRIPTION

Superb joinery Workshop and Storage unit measuring 1,081.37 Sq. FT. Conveniently situated within walking distance of the amenities in Pudsey town centre. The premises briefly comprises of a workshop and W.C. on the ground floor (currently split into two rooms), spacious first floor room and a further storage unit/garage adjoining with W.C. The property benefits from solid concrete floors at ground level, fluorescent lighting and a parking space to the front.

GROUND FLOOR

32' 0" x 16' 01" (9.75m x 4.9m) This room is currently split into two rooms with stud walling which could easily be removed. There are W.C. facilities available on this floor. A staircase leads up to the first floor.

FIRST FLOOR

32' 01" x 16' 03" (9.78m x 4.95m) Spacious room offering further workshop/storage space.

W.C.

With W.C. and wash basin.

GARAGE/STORAGE UNIT

Adjoining the property is a substantial garage/storage unit with W.C.

EXTERIOR

The property is located in a cul de sac position and has parking to the front.

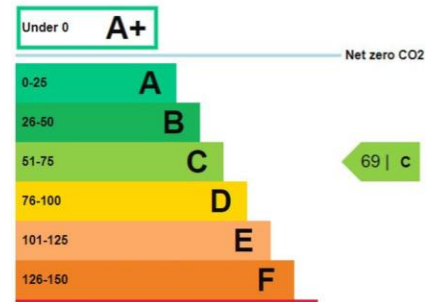
ADDITIONAL INFORMATION

Current EPC rating - C

The workshop and storage unit/garage are currently on two separate deeds.

Standard business rates apply

Tenure - Freehold



%epcGraph_c_1_245%

4 Old Lane, Birkenshaw,
Bradford, West Yorkshire,
BD11 2JX

www.barkesestateagents.co.uk
enquiries@barkesestateagents.co.uk
0113 2879344

